

LOC/DME I-SMX 108.9 Chan 26	APP CRS 300°	Rwy Idg TDZE Apt Elev N/A N/A 261
--	------------------------	---

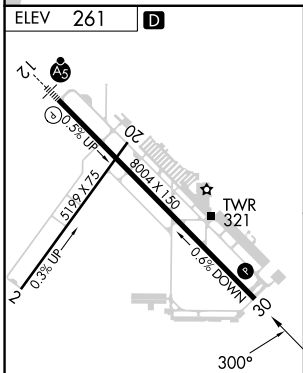
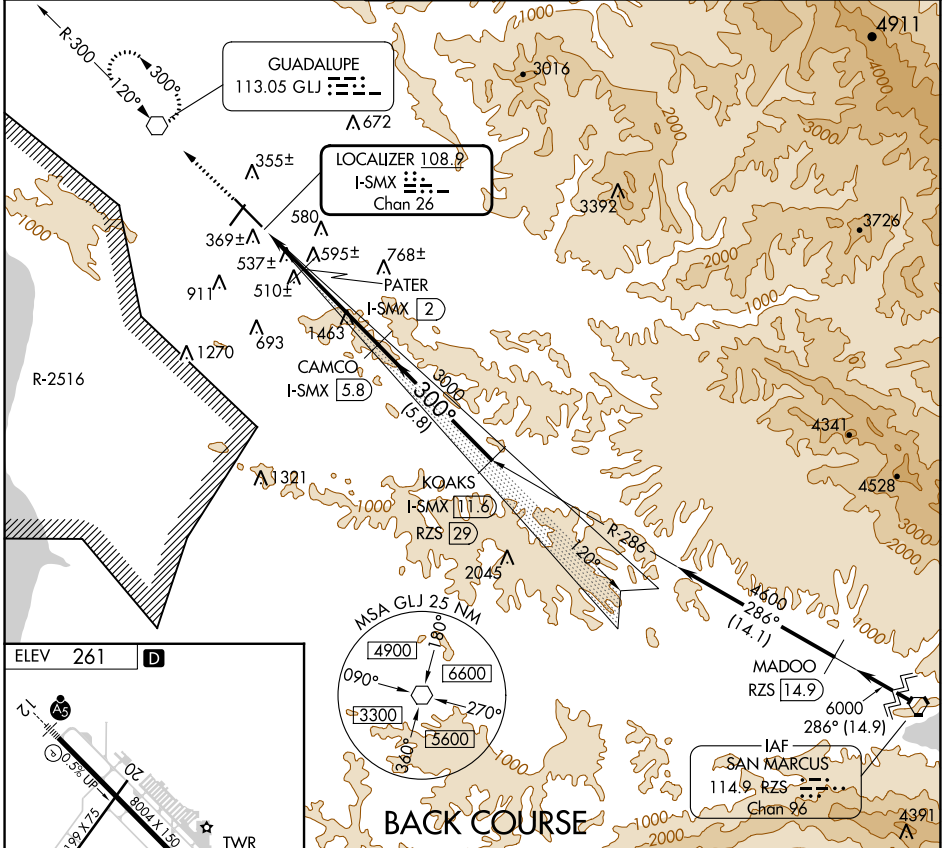
LOC/DME BC-A

SANTA MARIA PUB/CAPT G ALLAN HANCOCK FLD (SMX)

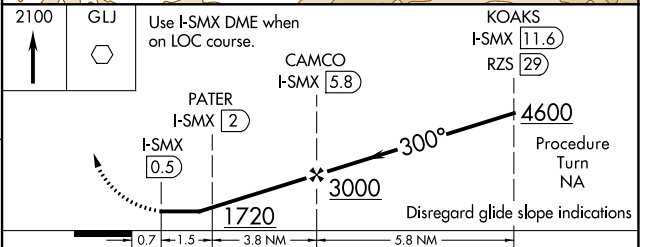
⚠ Circling to Rwy 2 NA at night. Helicopter visibility reduction below 1 SM NA. When local altimeter setting not received, use San Luis Obispo altimeter setting and increase all MDA 60 feet.

MISSED APPROACH: Climb to 2100 direct GLJ VOR and hold.

ATIS 121.15	SANTA BARBARA APP CON* 124.15 327.8	SANTA MARIA TOWER* 118.3 (CTAF) 239.25	GND CON 121.9	UNICOM 122.95
-----------------------	---	--	-------------------------	-------------------------



ELEV 261	D
HIRL Rwy 12-30 Ⓛ	



CATEGORY	A	B	C	D
CIRCLING	1100-1¼	839 (900-1¼)	1420-3 1159 (1200-3)	1540-3 1279 (1300-3)

SW-3, 05 SEP 2024 to 03 OCT 2024

SW-3, 05 SEP 2024 to 03 OCT 2024