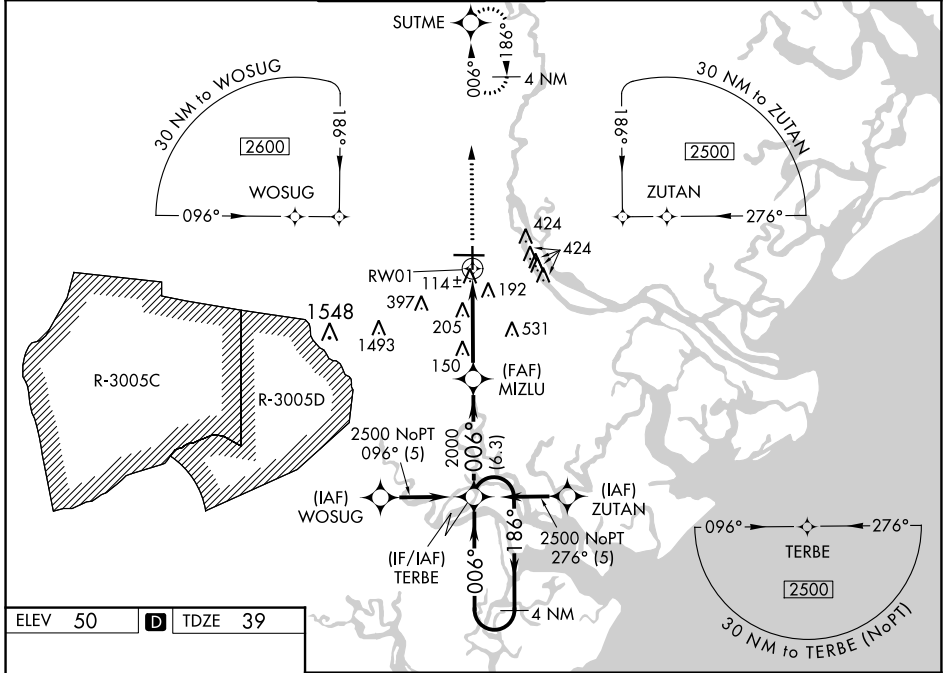


WAAS CH <b>45515</b> W01A	APP CRS <b>006°</b>	Rwy Idg <b>7002</b> TDZE <b>39</b> Apt Elev <b>50</b>
---------------------------------	------------------------	---

# RNAV (GPS) RWY 1

SAVANNAH/HILTON HEAD INTL (SAV)

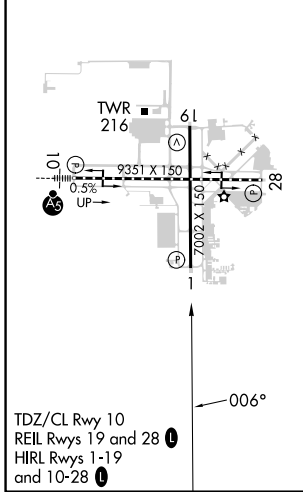
RNP APCH.		<p><b>▼</b> For uncompensated Baro-VNAV systems, LNAV/VNAV NA below -1.5°C (5°F) or above 49°C (120°F).</p> <p><b>▲</b> MISSED APPROACH: Climb to 2500 direct SUTME and hold.</p>			
ATIS <b>123.75</b>	SAVANNAH APP CON* <b>120.4 353.775</b>	SAVANNAH TOWER* <b>125.975 (CTAF) 0 257.8</b>	GND CON <b>121.9 348.6</b>	CLNC DEL <b>119.55 291.775</b>	UNICOM <b>122.95</b>



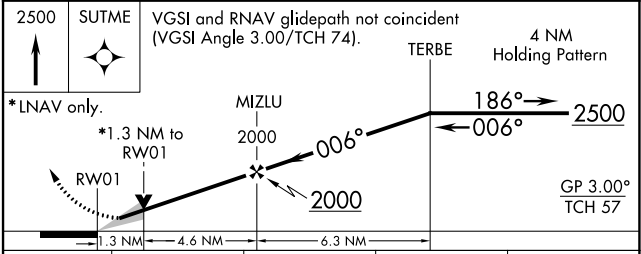
SE-4, 05 SEP 2024 to 03 OCT 2024

SE-4, 05 SEP 2024 to 03 OCT 2024

ELEV <b>50</b>	<b>D</b>	TDZE <b>39</b>
----------------	----------	----------------



TDZ/CL Rwy 10  
REIL Rws 19 and 28  
HIRL Rws 1-19  
and 10-28



CATEGORY	A	B	C	D
LPV DA	239/40		200 (200-3/4)	
LNAV/VNAV DA	384/60		345 (400-1 1/4)	
LNAV MDA	520/55 481 (500-1)		520-1 3/8 481 (500-1 3/8)	
<b>C</b> CIRCLING	520-1 470 (500-1)		740-2 690 (700-2) 740-2 1/4 690 (700-2 1/4)	