

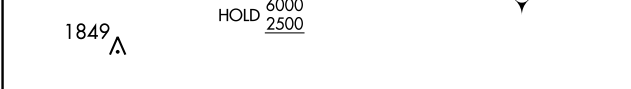
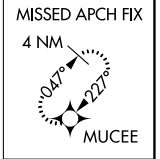
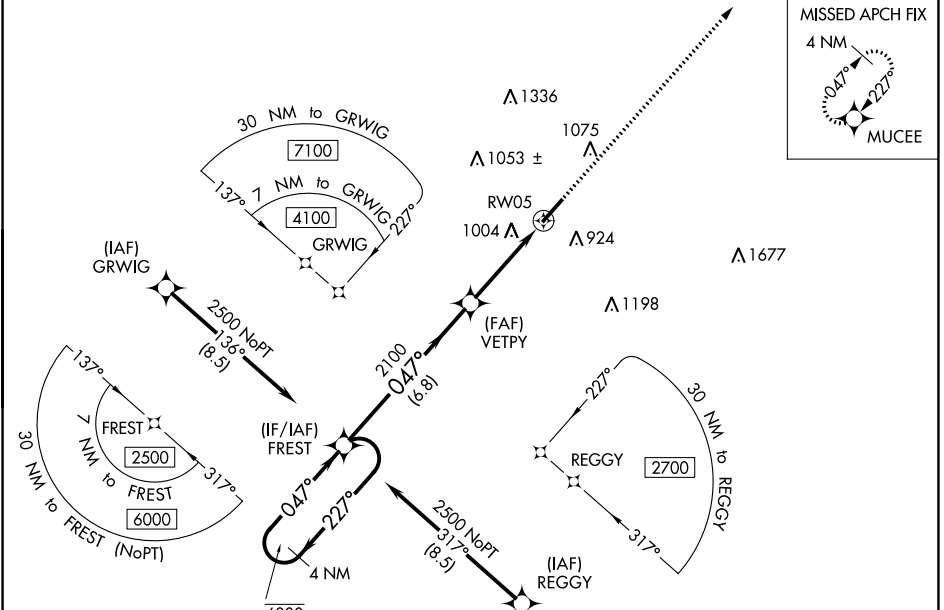
WAAS CH <b>61226</b> <b>W05A</b>	APP CRS <b>047°</b>	Rwy Idg TDZE Apt Elev	<b>5852</b> <b>802</b> <b>802</b>
--	------------------------	-----------------------------	---

# RNAV (GPS) RWY 5

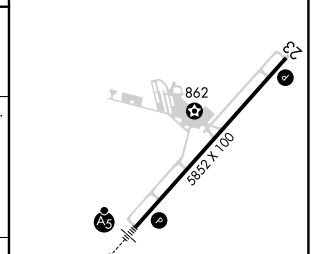
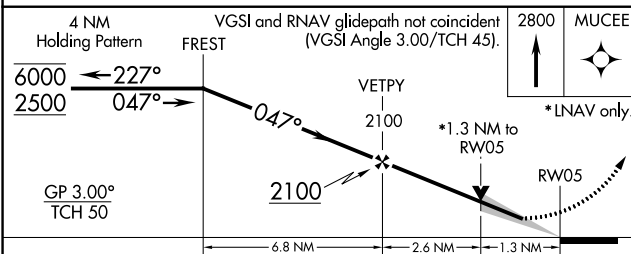
SPARTANBURG DOWNTOWN MEML/SIMPSON FLD (SP.A)

<b>RNP APCH-GPS.</b> For uncompensated Baro-VNAV systems, LNAV/VNAV NA below -16°C or above 54°C.		<b>MALSR</b> 	<b>MISSED APPROACH:</b> Climb to 2800 direct MUCEE and hold.
--	--	------------------	--

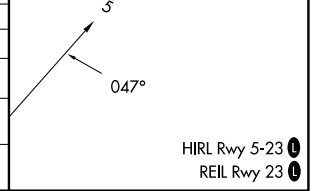
AWOS-3 <b>133.925</b>	GREER APP CON * <b>119.4 350.2</b>	CLNC DEL <b>120.55</b>	UNICOM <b>123.0 (CTAF)</b>
--------------------------	---------------------------------------	---------------------------	-------------------------------



ELEV 802	TDZE 802
----------	----------



CATEGORY	A	B	C	D
LPV DA		1002- <sup>3</sup> / <sub>4</sub>	200 (200- <sup>3</sup> / <sub>4</sub> )	
LNAV/VNAV DA		1260- <sup>7</sup> / <sub>8</sub>	458 (500- <sup>7</sup> / <sub>8</sub> )	
LNAV MDA	1260- <sup>3</sup> / <sub>4</sub>	458 (500- <sup>3</sup> / <sub>4</sub> )	1260- <sup>7</sup> / <sub>8</sub>	458 (500- <sup>7</sup> / <sub>8</sub> )
CIRCLING	1320-1	518 (600-1)	1380-1 <sup>1</sup> / <sub>2</sub> 578 (600-1 <sup>1</sup> / <sub>2</sub> )	1420-2 618 (700-2)



# RNAV (GPS) RWY 5

SE-2, 05 SEP 2024 to 03 OCT 2024

SE-2, 05 SEP 2024 to 03 OCT 2024