

LOC/DME I-TYK	APP CRS	Rwy Idg	7016
110.7	099°	TDZE	624
Chan 44		Apt Elev	624

ILS or LOC RWY 10

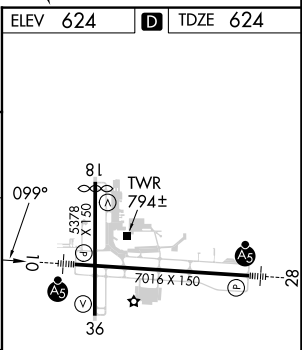
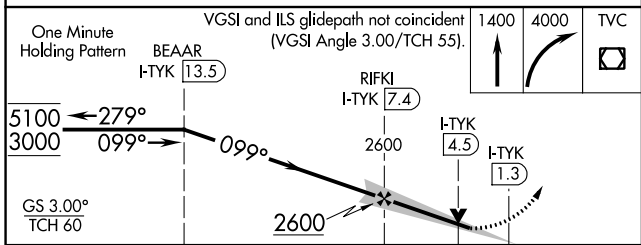
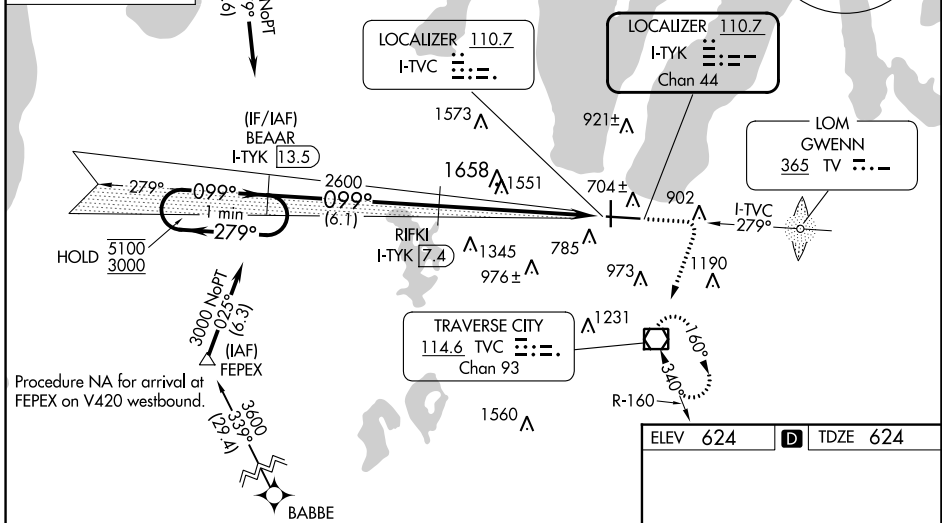
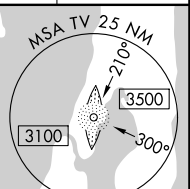
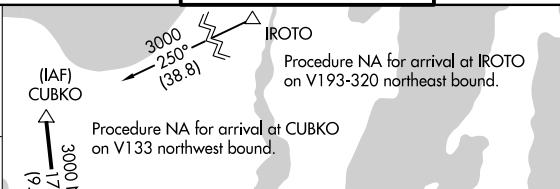
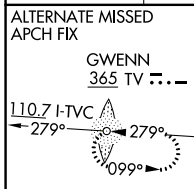
CHERRY CAPITAL (TVC)

RNP APCH - GPS. From BABBE, or IROTO, or FEPEX, or CUBKO.
 DME required.
 Rwy 10 helicopter visibility reduction below 3/4 SM NA.
 For inop ALS, increase S-ILS 10 all Cats visibility to 7/8 SM.

MALSR

 MISSED APPROACH: Climb to 1400 then climbing right turn to 4000 direct TVC VOR/DME and hold, continue climb-in-hold to 4000.

ATIS 119.175	MINNEAPOLIS CENTER 132.9 338.3	TRAVERSE CITY TOWER* 124.2 (CTAF) 348.6	GND CON 121.8 348.6	UNICOM 122.95
------------------------	--	---	-------------------------------	-------------------------



CATEGORY	A	B	C	D
S-ILS 10	917-3/4 293 (300-3/4)			
S-LOC 10	1700-3/4 1076 (1100-3/4)	1700-1 1076 (1100-1)	1700-2 1/2 1076 (1100-2 1/2)	1076 (1100-2 1/2)
CIRCLING	1700-1 1/4 1076 (1100-1 1/4)	1700-1 1/2 1076 (1100-1 1/2)	1700-3 1076 (1100-3)	1720-3 1096 (1100-3)

HIRL Rwy 10-28
 MIRL Rwy 18-36
 REIL Rwy 36

EC-1, 05 SEP 2024 to 03 OCT 2024

EC-1, 05 SEP 2024 to 03 OCT 2024