

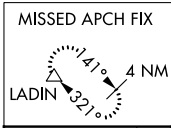
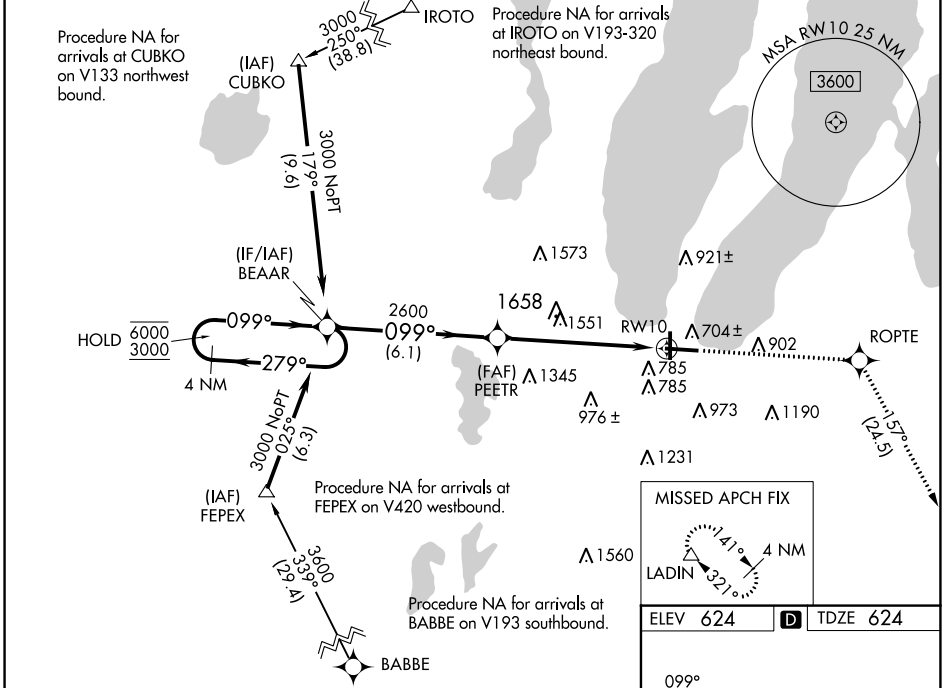
WAAS CH 42610 W10A	APP CRS 099°	Rwy Idg TDZE 624 Apt Elev 624	7016
--	------------------------	---	-------------

RNAV (GPS) RWY 10

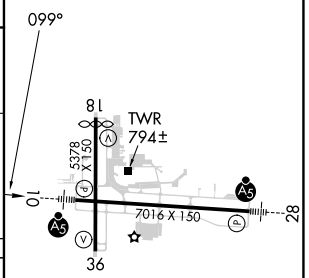
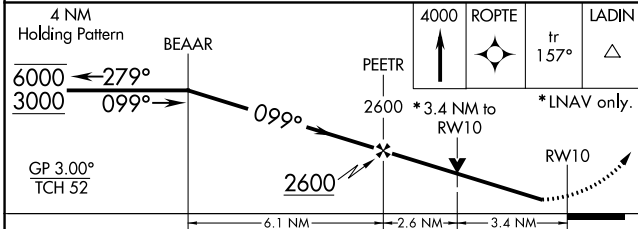
CHERRY CAPITAL (TVC)

RNP APCH.	<p>▽ For uncompensated Baro-VNAV systems, LNAV/VNAV NA below -19°C (-2°F) or above 54°C (130°F). Rwy 10 helicopter visibility reduction below ¾ SM NA. For inop ALS, increase LPV visibility all Cats ½ SM. Inop table does not apply to LNAV/VNAV all Cats and LNAV Cats C/D.</p>	MALSR	MISSED APPROCH: Climb to 4000 direct ROPTE and on track 157° to LADIN and hold.
-----------	---	-------	--

ATIS 119.175	MINNEAPOLIS CENTER 132.9 338.3	TRAVERSE CITY TOWER* 124.2 (CTAF) 0 348.6	GND CON 121.8 348.6	UNICOM 122.95
------------------------	--	---	-------------------------------	-------------------------



ELEV 624	D TDZE 624
----------	-------------------



CATEGORY	A	B	C	D
LPV DA		909-¾	285 (300-¾)	
LNAV/VNAV DA		1983-5	1359 (1400-5)	
LNAV MDA	1780-¾ 1156 (1200-¾)	1780-1 1156 (1200-1)	1780-3	1156 (1200-3)
C CIRCLING	1780-1¼ 1156 (1200-1¼)	1780-1½ 1156 (1200-1½)	1780-3	1156 (1200-3)

- HIRL Rwy 10-28
- MIRL Rwy 18-36
- REIL Rwy 36

EC-1, 05 SEP 2024 to 03 OCT 2024

EC-1, 05 SEP 2024 to 03 OCT 2024