

HI-TACAN Z RWY 36R

TACAN VAD Chan 80	APCH CRS 353°	Rwy ldg TDZE Arprt Elev 9300 217 233
-----------------------------	-------------------------	--

[USAF]

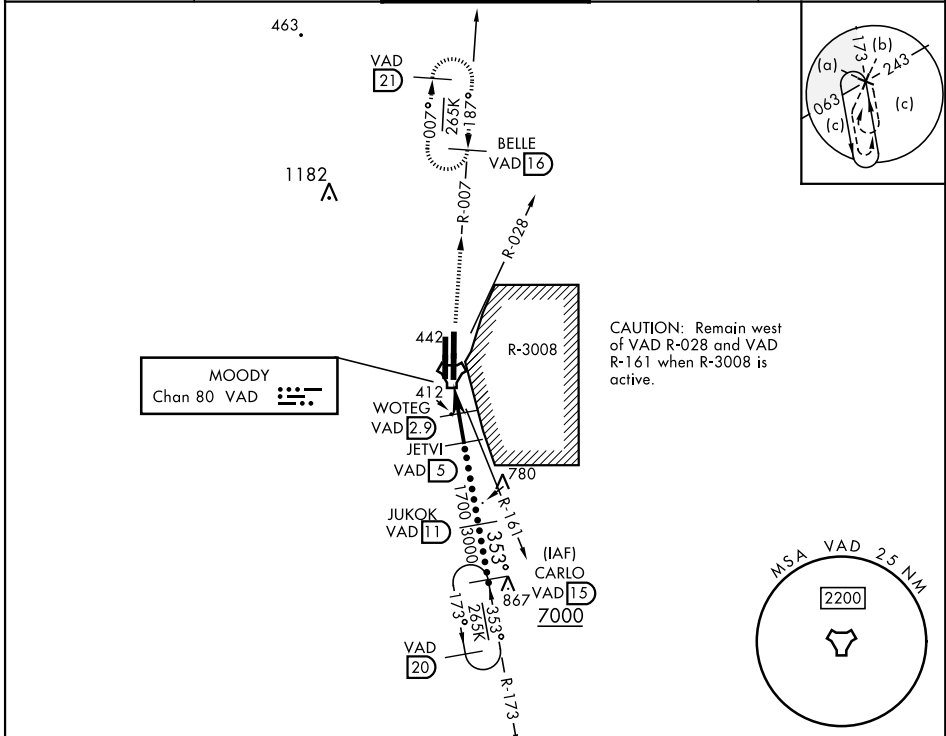
MOODY AFB (KVAD)

* When ALS inop, increase vis to 1 3/8 miles.

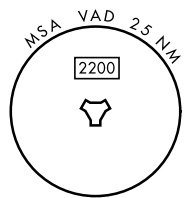
 ALSF-1

 MISSED APPROACH: Climb to 3000 on VAD TACAN R-007 to BELLE and hold.

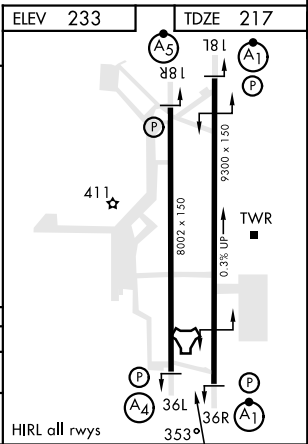
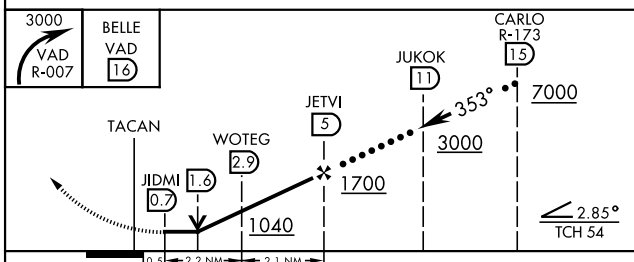
ATIS ★ 273.5	VALDOSTA APP CON 126.6 285.6	TOWER★ 128.45 (CTAF) 257.625	GND CON 138.95 275.8	CLNC DEL 120.625 296.7
------------------------	--	--	--------------------------------	----------------------------------



CAUTION: Remain west of VAD R-028 and VAD R-161 when R-3008 is active.



EMERG SAFE ALT 100 NM 3300



CATEGORY	C	D	E
S-36R *	680/50	463 (500-1)	
CIRCLING	760-1 1/2 527 (600-1 1/2)	800-2 567 (600-2)	

HI-TACAN Z RWY 36R

SE-4, 05 SEP 2024 to 03 OCT 2024

SE-4, 05 SEP 2024 to 03 OCT 2024