

# ILS or LOC Y RWY 18L

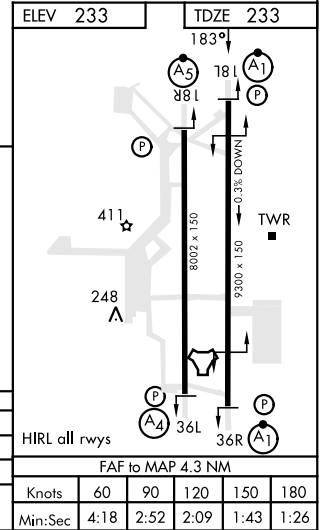
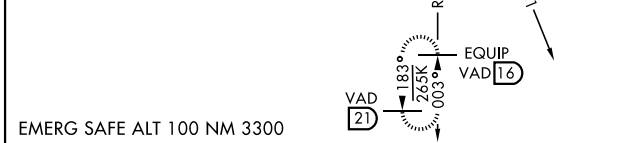
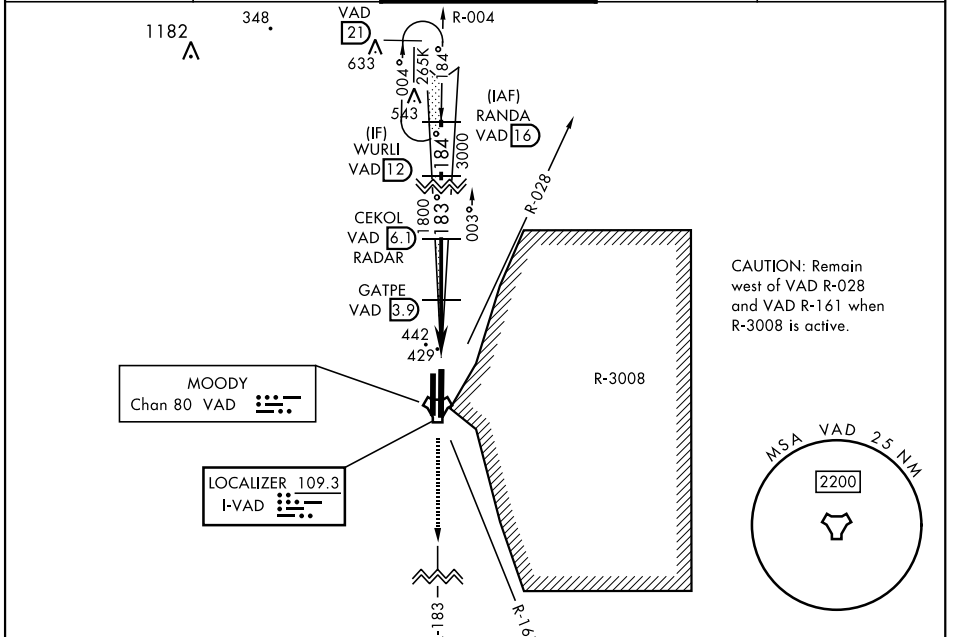
LOC I-VAD <b>109.3</b>	APCH CRS <b>183°</b>	Rwy Idg TDZE Arprt Elev <b>9300</b> <b>233</b> <b>233</b>
---------------------------	-------------------------	--

[USAF]

MOODY AFB (KVAD)

RADAR or DME required		ALS-F1 (A1)	MISSED APPROACH: Climb to 3000 on VAD TACAN R-183 to EQUIP and hold.	
* When ALS inop, increase RVR to 40 and vis to 3/4 mile. ** When ALS inop, increase CAT AB RVR to 55 and vis to 1 mile, CAT CDE vis to 1 1/2 miles.				

ATIS ★ <b>273.5</b>	VALDOSTA APP CON <b>126.6 285.6</b>	TOWER ★ <b>128.45</b> (CTAF) <b>257.625</b>	GND CON <b>138.95 275.8</b>	CLNC DEL <b>120.625 296.7</b>
------------------------	--	--	--------------------------------	----------------------------------



3000 VAD R-183	EQUIP VAD 16	VGSi and descent angles not coincident (VGSi angle 3.00/TCH 41).	
EEPEE VAD 1.8	VAD 2.6	GATPE VAD 6.1	CEKOL RADAR
1100	1800	3000	3000
0.5 NM	2.1 NM	2.1 NM	
GS 3.00°	TCH 49		

CATEGORY	A	B	C	D	E
S-ILS 18L*	433/24		200 (200-1/2)		
S-LOC 18L**	680/24	447 (500-1/2)	680/45	447 (500-3/8)	
CIRCLING	760-1	527 (600-1)	760-1 1/2	527 (600-1/2)	800-2 567 (600-2)

# ILS or LOC Y RWY 18L

SE-4, 05 SEP 2024 TO 03 OCT 2024

SE-4, 05 SEP 2024 TO 03 OCT 2024