

VALDOSTA, GEORGIA

RNAV (GPS) RWY 18R

APCH CRS 183°	Rwy Idg TDZE Arprt Elev	8002 231 233
-------------------------	-------------------------------	---

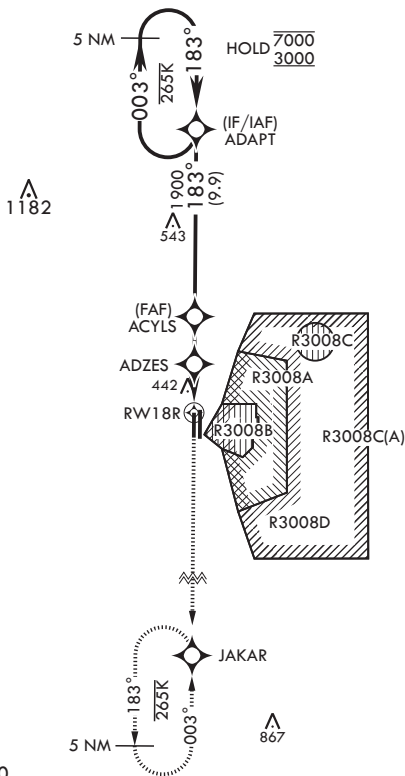
(USAF)

MOODY AFB (KVAD)

RNP APCH-GPS	MALSR	MISSED APPROACH: Climb to 3000 direct JAKAR and hold.
<p>▼ * When ALS inop, increase CAT AB RVR to 55, vis to 1 mile; CAT CDE vis to 1 3/8 miles.</p>		

ATIS★ 273.5	VALDOSTA APP CON 126.6 285.6	TOWER★ 128.45 (CTAF) 257.625	GND CON 138.95 275.8	CLNC DEL 120.625 296.7
-----------------------	--	---	--------------------------------	----------------------------------

Rwy 18R helicopter visibility reduction below RVR 4000 not authorized.



EMERG SAFE ALT 100 NM 3300

<p>3000 JAKAR</p>	<p>ELEV 233</p>		<p>TDZE 231</p>		
CATEGORY	A	B	C	D	E
LNAV MDA*	700/40	469 (500-3/4)	700/50	469	(500-1)
CIRCLING	760-1	527 (600-1)	760-1 1/2 527 (600-1 1/2)	800-2	567 (600-2)

HIRL all Rwys

VALDOSTA, GEORGIA

30°58'N - 83°12'W

MOODY AFB (KVAD)

Amdt 1 25JAN24

RNAV (GPS) RWY 18R

SE-4, 05 SEP 2024 to 03 OCT 2024

SE-4, 05 SEP 2024 to 03 OCT 2024