

WAAS CH 69411 W30A	APP CRS 298°	Rwy ldg TDZE 22 Apt Elev 24	7276
--	------------------------	---	-------------

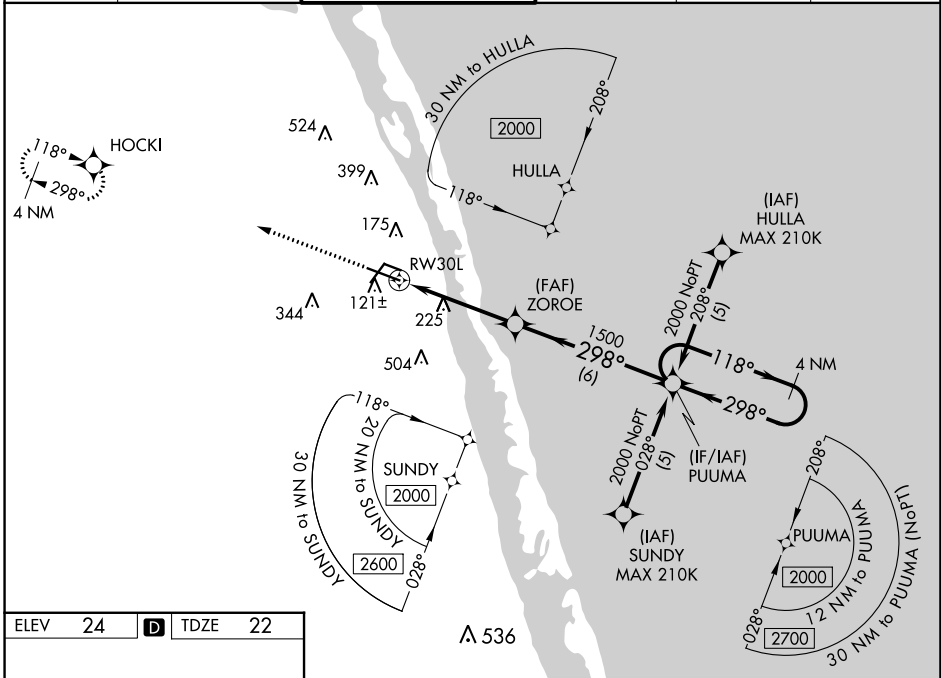
RNAV (GPS) RWY 30L

VERO BEACH RGNL (VRB)

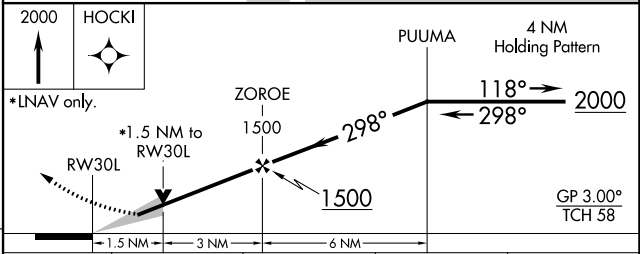
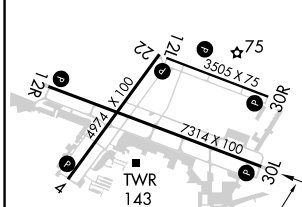
⚠ Circling to Rwy 30R NA at night. Baro-VNAV NA when using Fort Pierce altimeter setting. For uncompensated Baro-VNAV systems, LNAV/VNAV NA below 0°C (32°F) or above 54°C (130°F). DME/DME RNP-0.3 NA. VDP NA when using Fort Pierce altimeter setting. When local altimeter setting not received, use Fort Pierce altimeter setting and increase all DA 23 feet and all MDA 40 feet and increase LNAV/VNAV all Cats visibility 1/8 mile LNAV Cats C/D and Circling visibility Cats C/D 1/4 mile.

⚠ MISSED APPROACH: Climb to 2000 direct HOCKI and hold.

ATIS 120.575	PALM BEACH APP CON 123.625 225.4	VERO BEACH TOWER * 126.3 (CTAF) 0	GND CON 127.45	CLNC DEL 134.975	UNICOM 122.95
------------------------	--	---	--------------------------	----------------------------	-------------------------



ELEV 24	D	TDZE 22
----------------	----------	----------------



CATEGORY	A	B	C	D
LPV DA		222-3/4	200 (200-3/4)	
LNAV/VNAV DA		346-1	324 (400-1)	
LNAV MDA	540-1	518 (600-1)	540-1 3/8	518 (600-1 3/8)
CIRCLING	560-1	536 (600-1)	660-1 3/4 636 (700-1 3/4)	820-2 1/2 796 (800-2 1/2)

MIRL Rwy 4-22, 12R-30L, and 12L-30R **0**
REIL Rwy 4, 12R, 22 and 30L **0**

SE-3, 05 SEP 2024 to 03 OCT 2024

SE-3, 05 SEP 2024 to 03 OCT 2024