

WAAS CH <b>45824</b> <b>W25A</b>	APP CRS <b>246°</b>	Rwy Idg TDZE <b>543</b> Apt Elev <b>544</b>
--	------------------------	---

# RNAV (GPS) RWY 25

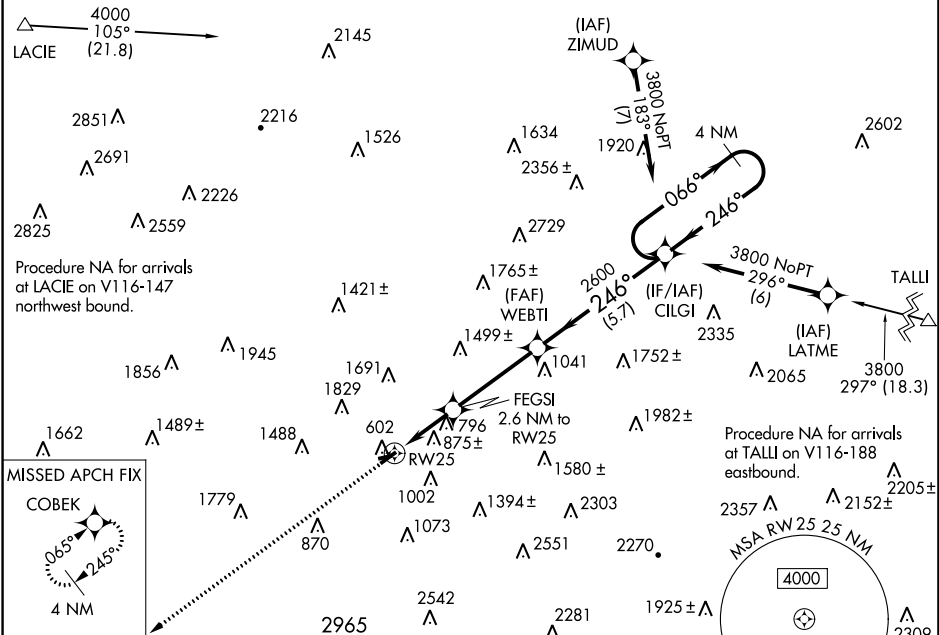
WILKES-BARRE WYOMING VALLEY (WBW)

RNP APCH.

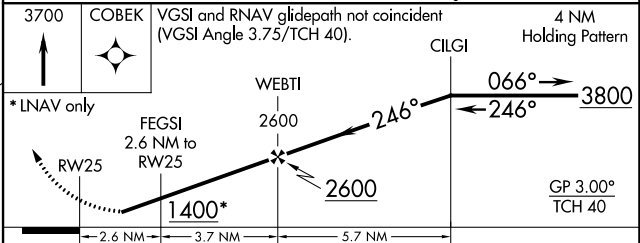
**NA** Circling NA to Rwys 9 and 27. Rwy 25 helicopter visibility reduction below 1 SM NA. Baro-VNAV NA. Use Wilkes-Barre/Scranton altimeter setting. Circling Rwy 7 NA at night. Circling NA NW of Rwy 7-25. Procedure NA at night.

**MISSED APPROACH:**  
Climb to 3700 direct COBEK and hold.

AVP ASOS <b>135.75</b>	WILKES-BARRE APP CON <b>126.3 256.7</b>	UNICOM <b>122.8 (CTAF)</b>
---------------------------	--	-------------------------------



ELEV <b>544</b>	TDZE <b>543</b>
-----------------	-----------------



CATEGORY	A	B	C	D
LPV DA		NA		
LNAV/VNAV DA	NA			
LNAV MDA	1240-1	697 (700-1)	NA	
CIRCLING	1320-1 776 (800-1)	1380-1¼ 836 (900-1¼)	NA	

MIRL Rwy 7-25

NE-4, 05 SEP 2024 to 03 OCT 2024

NE-4, 05 SEP 2024 to 03 OCT 2024