

LOC I-GMX 111.55	APP CRS 238°	Rwy Idg 8016 TDZE 26 Apt Elev 32
----------------------------	------------------------	---

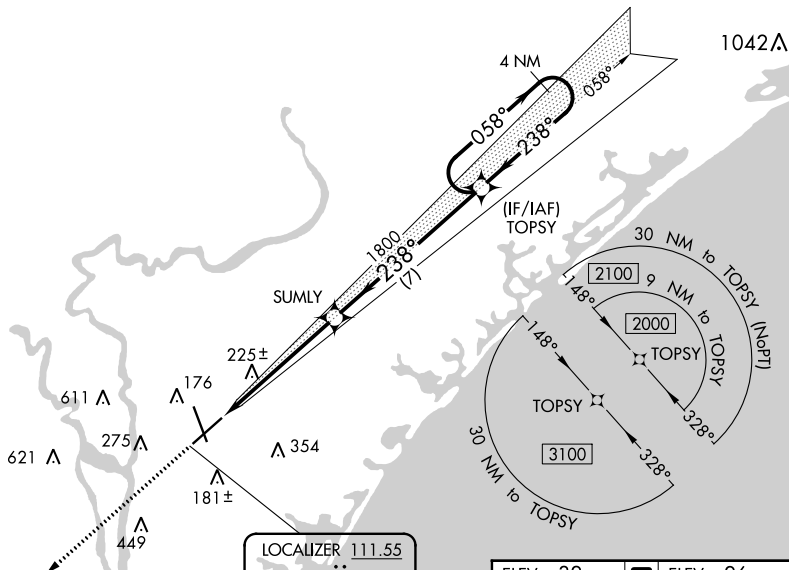
ILS Z RWY 24

WILMINGTON INTL (ILM)

	RNAV 1-GPS required. **RVR 1800 authorized with use of FD or AP or HUD to DA.	MALS R 	MISSED APPROACH: Climb to 3100 direct LURKY and hold.

ATIS 124.975	WILMINGTON APP CON ★ 118.25 284.65 (164°-343°) 135.75 317.425 (344°-163°)	WILMINGTON TOWER ★ 119.9 (CTAF) 239.3	GND CON 121.9 348.6	UNICOM 122.95
------------------------	---	--	-------------------------------	-------------------------

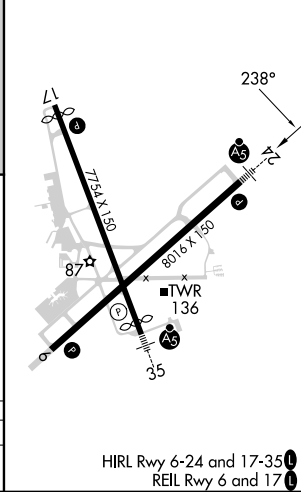
RNAV 1-GPS or RADAR REQUIRED



SE-2, 05 SEP 2024 to 03 OCT 2024

SE-2, 05 SEP 2024 to 03 OCT 2024

ELEV 32	D	ELEV 26
---------	----------	---------



3100	LURKY	VGSI and ILS glidepath not coincident (VGSI Angle 3.00/TCH 48).	TOPSY	4 NM Holding Pattern
↑				
CATEGORY	A	B	C	D
S-ILS 24**	226/24 200 (200-1/2)			

HIRL Rwy 6-24 and 17-35
 REL Rwy 6 and 17