

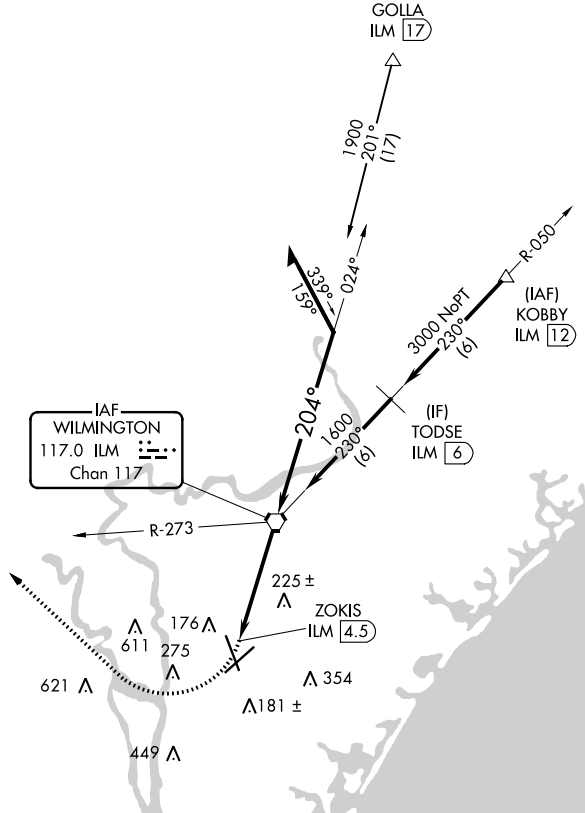
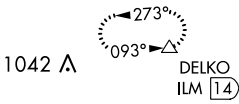
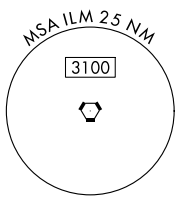
VORTAC ILM <b>117.0</b> Chan <b>117</b>	APP CRS <b>204°</b>	Rwy Idg TDZE Apt Elev	<b>N/A</b> <b>N/A</b> <b>32</b>
---	------------------------	-----------------------------	---------------------------------------

# TACAN-A

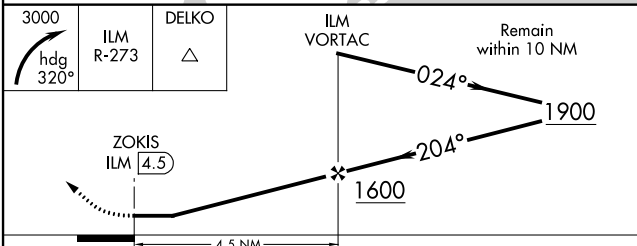
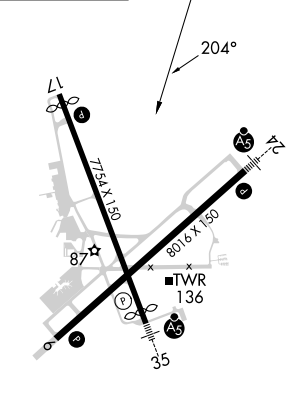
WILMINGTON INTL (ILM)

MISSED APPROACH: Climbing right turn to 3000 heading 320° and ILM R-273 to DELKO/ILM 14 DME and hold.

ATIS <b>124.975</b>	WILMINGTON APP CON ★ <b>118.25 284.65</b> (164°-343°) <b>135.75 317.425</b> (344°-163°)	WILMINGTON TOWER ★ <b>119.9</b> (CTAF) <b>0 239.3</b>	GND CON <b>121.9 348.6</b>	UNICOM <b>122.95</b>
------------------------	---	--	-------------------------------	-------------------------



ELEV 32 **D**



CATEGORY	A	B	C	D
<b>C</b> CIRCLING	560-1 528 (600-1)		720-2 688 (700-2)	920-3 888 (900-3)

SE-2, 05 SEP 2024 to 03 OCT 2024

SE-2, 05 SEP 2024 to 03 OCT 2024