

LOC/DME I-YKM 110.1 Chan 38	APP CRS 094°	Rwy Idg TDZE Apt Elev 1099	N/A N/A 1099
---	------------------------	--------------------------------------	---------------------------

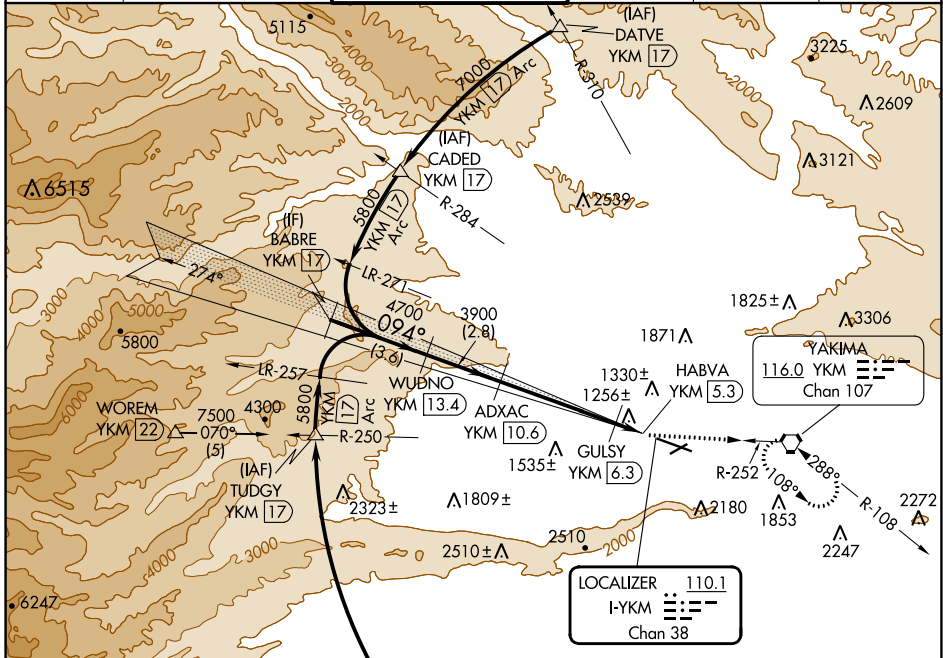
LOC/DME BC-B

YAKIMA AIR TRML/MCALLISTER FLD (YKM)

⚠ Simultaneous reception of I-YKM and YKM DME required.
⚠ Circling NA south of Rwy 9-27.
 When local altimeter setting not received, procedure NA.

MISSED APPROACH: Climb to 4600 via YKM VORTAC
 R-252 to YKM VORTAC and hold, continue climb-in-hold to 4600.

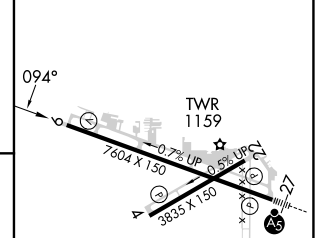
ATIS 125.25	SPOKANE APP CON* 123.8 263.15	YAKIMA TOWER* 133.25 (CTAF) 0 257.8	GND CON 121.9	CLNC DEL 121.9	UNICOM 122.95
-----------------------	---	--	-------------------------	--------------------------	-------------------------



NW-1, 05 SEP 2024 to 03 OCT 2024

NW-1, 05 SEP 2024 to 03 OCT 2024

ELEV 1099	D
-----------	----------



BABRE YKM 17	WUDNO YKM 13.4	ADXAC YKM 10.6	GULSY YKM 6.3	HABVA YKM 5.3	YKM
5800	4700	3900	2160	4600	YKM
Procedure Turn NA	094°	5.94° TCH 50			YKM R-252
Disregard glide slope indications.					
3.6 NM		2.8 NM		4.4 NM	
A		B		D	

CATEGORY	A	B	C	D
C CIRCLING	1760-1	661 (700-1)	1940-2½ 841 (900-2½)	2280-3 1181 (1200-3)

MIRL Rwy 4-22
 HIRL Rwy 9-27
 REIL Rws 4, 9, and 22

LOC/DME BC-B