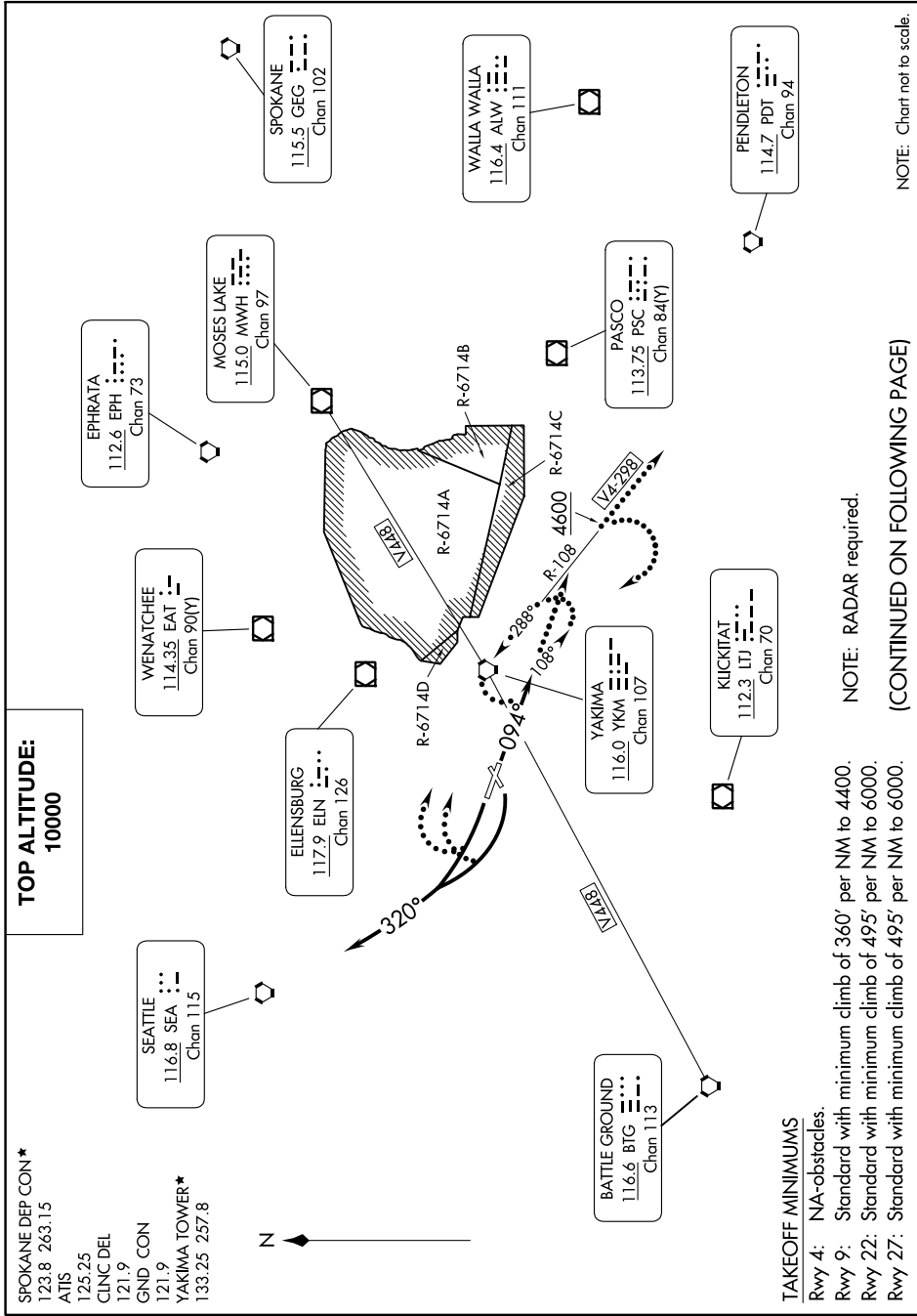


NACHES FOUR DEPARTURE

YAKIMA AIR TRML/MCALLISTER FLD (YKM)
AL-465 (FAA) YAKIMA, WASHINGTON

NW-1, 05 SEP 2024 to 03 OCT 2024



SPOKANE DEP CON*
123.8 263.15
ATIS
125.25
CINC DEL
121.9
GND CON
121.9
YAKIMA TOWER*
133.25 257.8

NACHES FOUR DEPARTURE

10NOV16

TAKEOFF MINIMUMS

- Rwy 4: N/A-obstacles.
- Rwy 9: Standard with minimum climb of 360' per NM to 4400.
- Rwy 22: Standard with minimum climb of 495' per NM to 6000.
- Rwy 27: Standard with minimum climb of 495' per NM to 6000.

NOTE: RADAR required.

(CONTINUED ON FOLLOWING PAGE)

NOTE: Chart not to scale.

YAKIMA, WASHINGTON

YAKIMA AIR TRML/MCALLISTER FLD (YKM)

NW-1, 05 SEP 2024 to 03 OCT 2024