

| | | |
|-------------|----------|-------------|
| APP CRS | Rwy Idg | 7604 |
| 094° | TDZE | 1099 |
| | Apf Elev | 1099 |

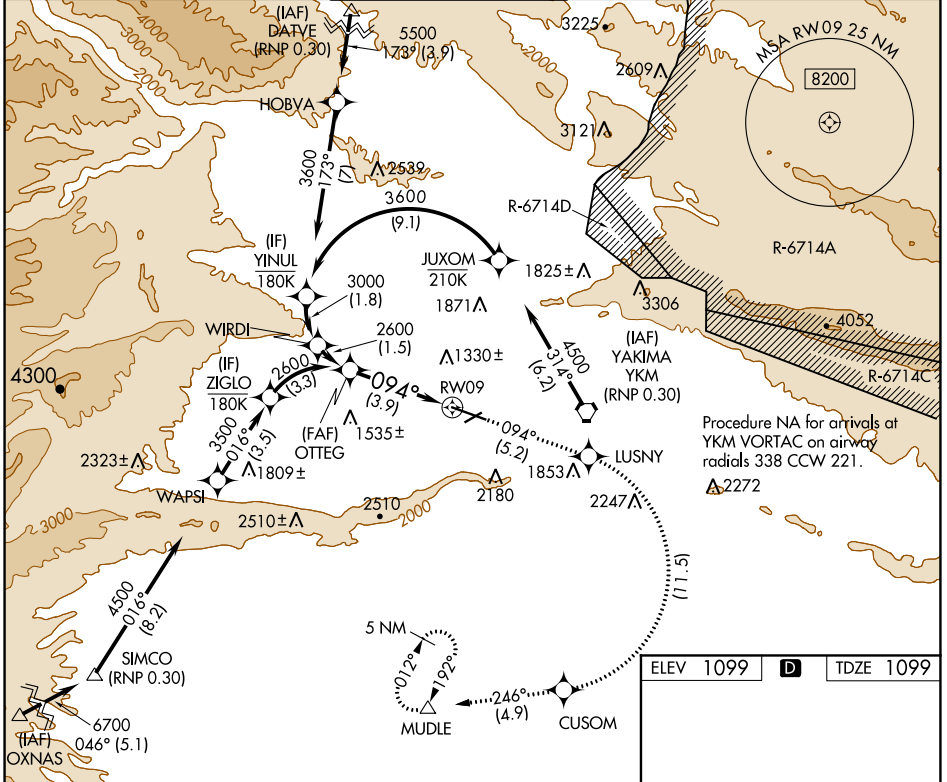
RNAV (RNP) RWY 9

YAKIMA AIR TRML/MCALLISTER FLD (YKM)

RF required. GPS required. For uncompensated Baro-VNAV systems, procedure NA below -17°C (2°F) or above 45°C (113°F). *Missed approach requires a minimum climb of 425 feet per NM to 3000.

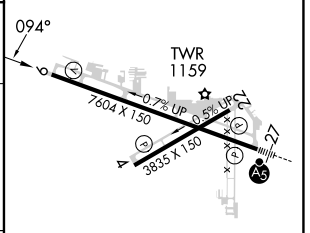
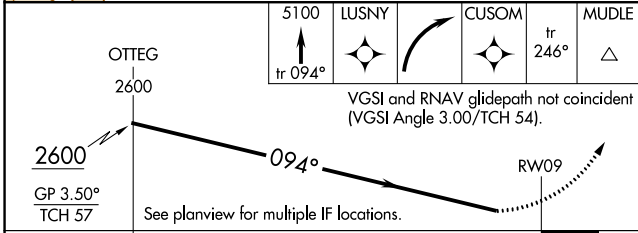
MISSED APPROACH: Climb to 5100 on track 094° to LUSNY right turn to CUSOM and on track 246° to MUDLE and hold.

| | | | | | |
|-----------------------|---|---|-------------------------|--------------------------|-------------------------|
| ATIS 125.25 | SPOKANE APP CON* 123.8 263.15 | YAKIMA TOWER* 133.25 (CTAF) 0 257.8 | GND CON 121.9 | CLNC DEL 121.9 | UNICOM 122.95 |
|-----------------------|---|---|-------------------------|--------------------------|-------------------------|



NW-1, 05 SEP 2024 to 03 OCT 2024

NW-1, 05 SEP 2024 to 03 OCT 2024



| CATEGORY | A | B | C | D |
|--------------|----------------------|---|---|----|
| RNP 0.30 DA* | 1473-1 374 (400-1) | | | NA |
| RNP 0.30 DA | 1934-2½ 835 (900-2½) | | | NA |

AUTHORIZATION REQUIRED

MRL Rwy 4-22
HIRL Rwy 9-27
REIL Rws 4, 9, and 22