

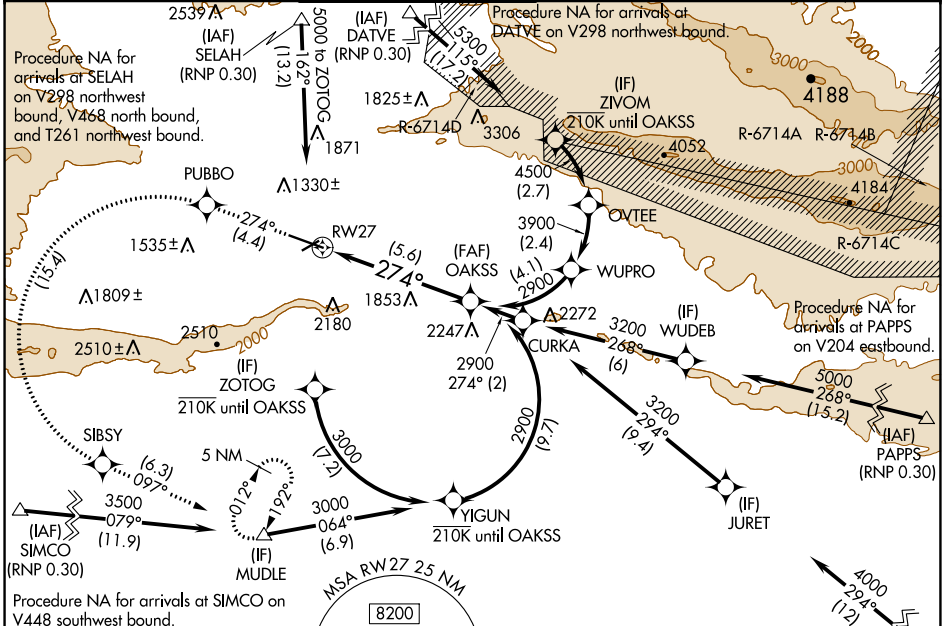
APP CRS 274°	Rwy Idg TDZE Apt Elev	7604 1068 1099
------------------------	-----------------------------	---

RNAV (RNP) Y RWY 27

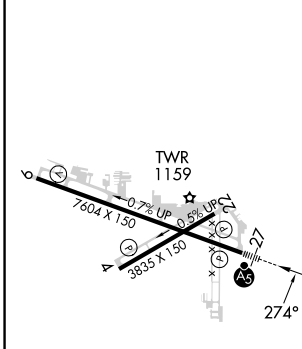
YAKIMA AIR TRML/MCALLISTER FLD (YKM)

RNP APCH - GPS. From MUDE or OVTEE or YIGUN: RF.	MALSR 	MISSED APPROACH: Climb to 5100 on track 274° to PUBBO left turn to SIBSY and on track 097° to MUDE and hold. *Missed approach requires minimum climb of 425 feet per NM to 3400.
▼ For uncompensated Baro-VNAV systems, procedure NA below -15°C or above 54°C. DATVE transition NA when R-6714 A, C, D active. For inop ALS, increase RNP 0.30* all Cats visibility to RVR 5500 and RNP 0.30 all Cats to 2½ SM.		

ATIS 125.25	SPOKANE APP CON* 123.8 263.15	YAKIMA TOWER* 133.25 (CTAF) 0 257.8	GND CON 121.9	CLNC DEL 121.9	UNICOM 122.95
-----------------------	---	---	-------------------------	--------------------------	-------------------------



ELEV 1099	D	TDZE 1068
-----------	----------	-----------



5100 tr 274°	PUBBO 	SIBSY 	MUDE tr 097° 	OAKSS 2900
See planview for multiple IF locations.				
RW27				274°
				2900
				GP 3.00° TCH 57
5.6 NM				

CATEGORY	A	B	C	D
RNP 0.30 DA*		1418/30	350 (400-5%)	
RNP 0.30 DA		1845-1¾	777 (800-1¾)	

MIRL Rwy 4-22
HIRL Rwy 9-27
REIL Rwy 4, 9, and 22

YAKIMA, WASHINGTON
Orig-D 23FEB23

YAKIMA AIR TRML/MCALLISTER FLD (YKM)
46°34'N-120°33'W
RNAV (RNP) Y RWY 27

AUTHORIZATION REQUIRED

NW-1, 05 SEP 2024 to 03 OCT 2024

NW-1, 05 SEP 2024 to 03 OCT 2024