


APP CRS	Rwy Idg	7604
274°	TDZE	1068
	Apt Elev	1099

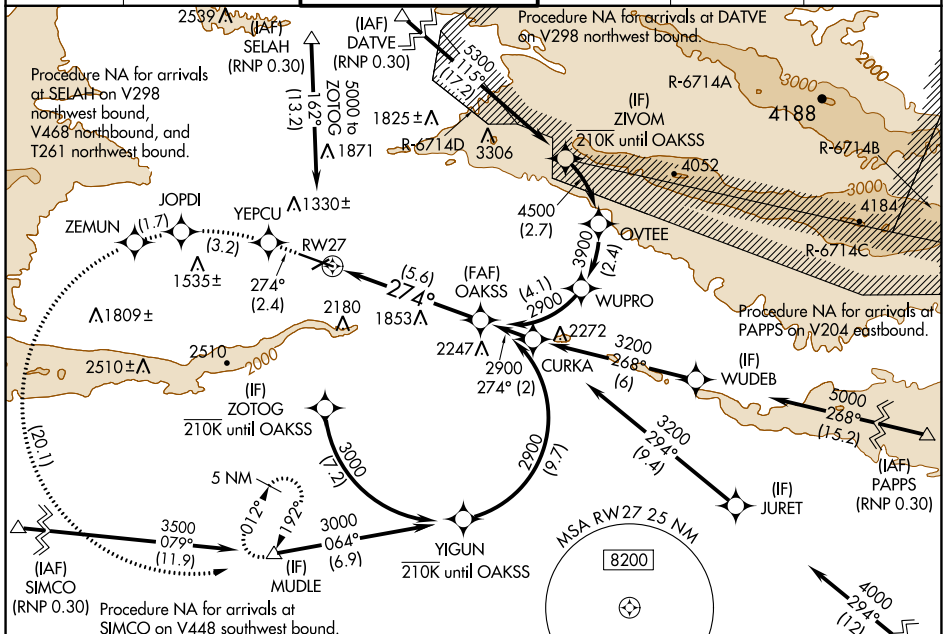
RNAV (RNP) Z RWY 27

YAKIMA AIR TRML/MCALLISTER FLD (YKM)

▼ For uncompensated Baro-VNAV systems, procedure NA below -17°C (2°F) or above 54°C (130°F). RF required. GPS required. Missed approach requires RNP less than 1.0. For inop ALS increase *RNP 0.10 DA visibility all Cats to RVR 4500 and RNP 0.30 DA visibility all Cats to 1/2 SM. DATVE transition NA when R-6714 A, C, D active.

MALSRS 
 MISSED APPROACH: Climb to 5100 on track 274° to YEPCU left turn to JOPDI left turn to ZEMUN left turn to MUDLE and hold.
 * Missed approach requires a minimum climb of 215 feet per NM to 4300.

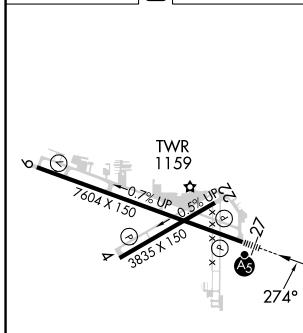
ATIS 125.25	SPOKANE APP CON* 123.8 263.15	YAKIMA TOWER* 133.25 (CTAF) 0 257.8	GND CON 121.9	CLNC DEL 121.9	UNICOM 122.95
-----------------------	---	---	-------------------------	--------------------------	-------------------------



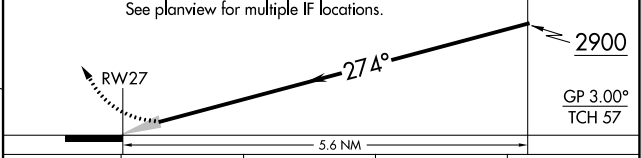
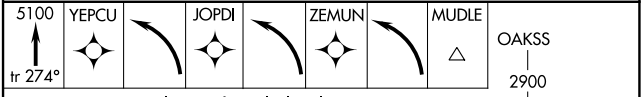
NW-1, 05 SEP 2024 to 03 OCT 2024

NW-1, 05 SEP 2024 to 03 OCT 2024

ELEV 1099	D	TDZE 1068
-----------	----------	-----------



Procedure NA for arrivals at SUNED on V4-298 eastbound, and V497 northeast bound.



CATEGORY	A	B	C	D
RNP 0.10 DA*		1348/24	280 (300-1/2)	
RNP 0.30 DA		1468/45	400 (400-7/8)	

AUTHORIZATION REQUIRED