

# RNAV (GPS) RWY 1

CAPE MAY COUNTY (WWD)

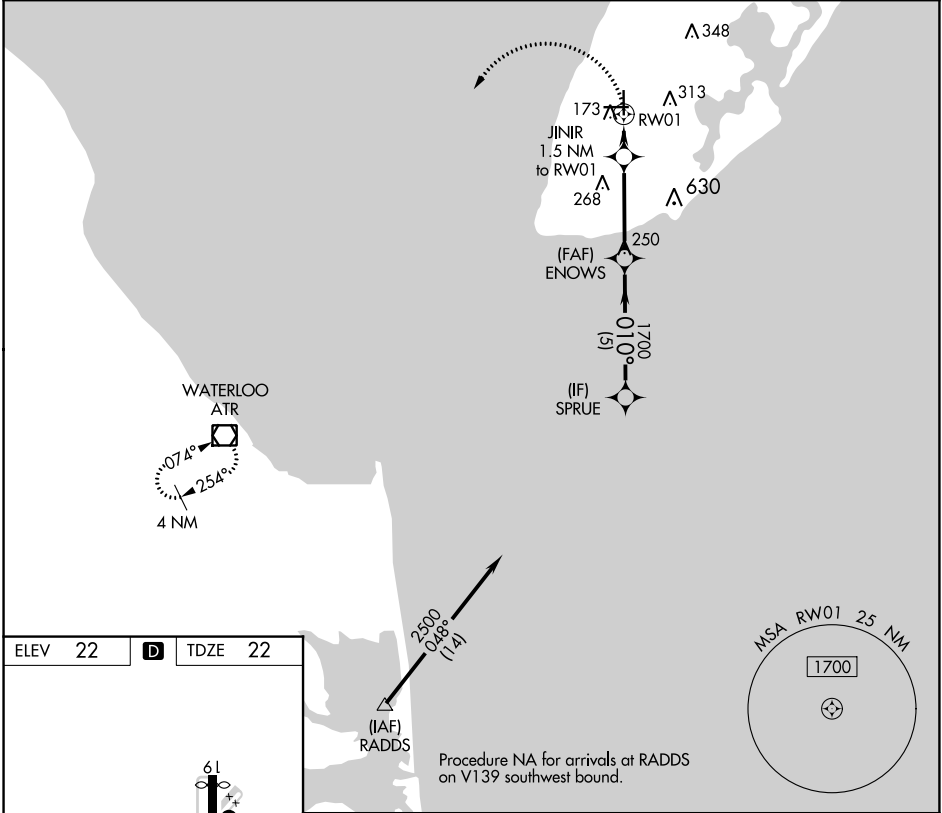
APP CRS <b>010°</b>	Rwy Idg <b>5036</b> TDZE <b>22</b> Apt Elev <b>22</b>
------------------------	---

RNP APCH.

**▽** Circling NA for Cats C and D NE of Rwy 19 and 28. Rwy 1 helicopter visibility reduction below 1 SM NA. Straight-in Rwy 1 NA at night, Circling Rwy 1 NA at night.

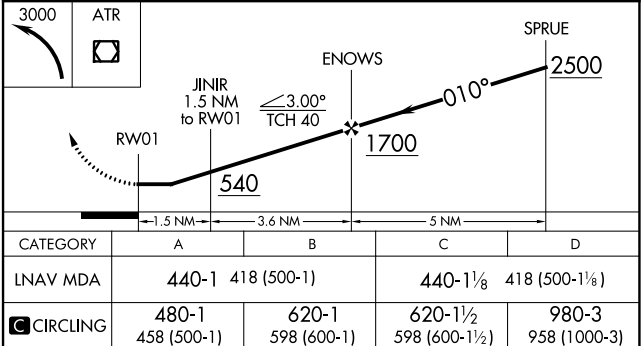
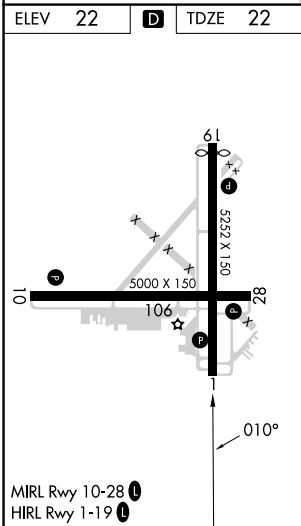
MISSED APPROACH: Climbing left turn to 3000 direct ATR VOR/DME and hold.

AWOS-3PT <b>118.275</b>	ATLANTIC CITY APP CON <b>124.6 327.125</b>	CLNC DEL <b>121.7</b>	UNICOM <b>122.7 (CTAF) 0</b>
----------------------------	---	--------------------------	---------------------------------



NE-2, 05 SEP 2024 to 03 OCT 2024

NE-2, 05 SEP 2024 to 03 OCT 2024



# RNAV (GPS) RWY 1