

CLOVIS, NEW MEXICO

ILS or LOC RWY 4

LOC I-GLO 108.5	APCH CRS 038°	Rwy Idg 10,003 TDZE 4284 Arprt Elev 4295
---------------------------	-------------------------	---

AL-512 [USAF]

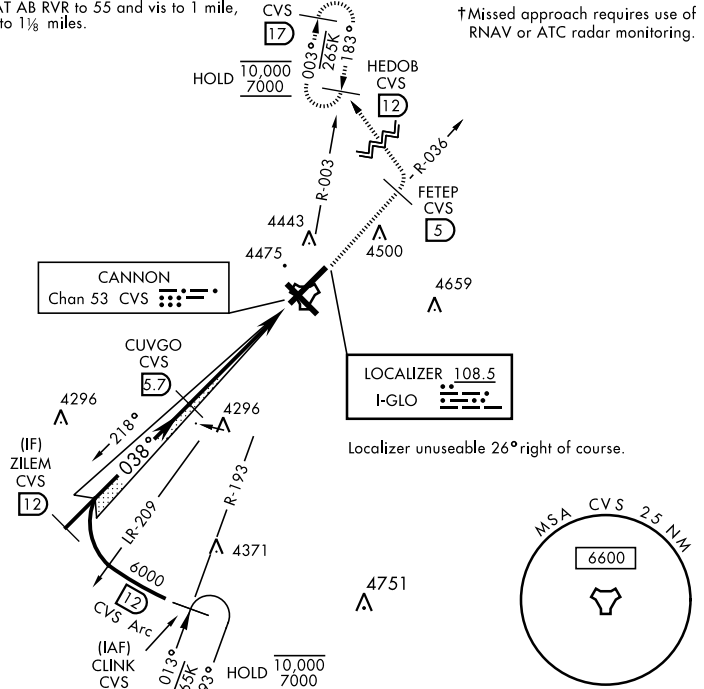
CANNON AFB (KCVS)

ATC RADAR or DME required.		ALSF-1	† MISSED APPROACH: Climb to 6000 out CVS TACAN R-036 to 5 DME (FETEP) turning left climb to 7000 intcp CVS R-003 to 12 DME (HEDOB) and hold.	
▼ *When ALS inop, increase all CAT RVR to 40 and vis to ¾ miles.		(A1)		

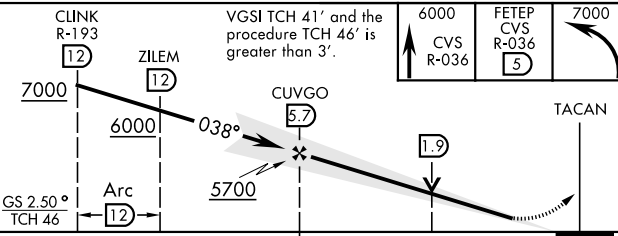
ATIS 119.1 269.9	CANNON APP CON 118.425 352.1	CANNON TOWER 120.4 270.25	GND CON 121.9 275.8	CLNC DEL 120.2 293.225
----------------------------	--	-------------------------------------	-------------------------------	----------------------------------

**When ALS inop, increase CAT AB RVR to 55 and vis to 1 mile, CAT CDE RVR to 60 and vis to 1½ miles.

† Missed approach requires use of RNAV or ATC radar monitoring.



EMERG SAFE ALT 100 NM 9000



ELEV 4295	TDZE 4284
HIRL all rwys	
FAF to MAP 5.2 NM	
Knots	60 90 120 150 180
Min:Sec	5:12 3:28 2:36 2:05 1:44

CATEGORY	A	B	C	D	E
S-ILS 4 *	4484/24		200	(200-½)	
S-LOC 4 **	4680/24	396 (400-½)	4680/35	396 (400-¾)	
CIRCLING	4840-1	545 (600-1)	4860-1½	5000-2¼	5020-2½
			565 (600-1½)	705 (800-2¼)	725 (800-2½)

CLOVIS, NEW MEXICO
Amdt 4 11OCT18

34°23'N-103°19'W

CANNON AFB (KCVS)

ILS or LOC RWY 4

SW-1, 05 SEP 2024 to 03 OCT 2024

SW-1, 05 SEP 2024 to 03 OCT 2024