

CLOVIS, NEW MEXICO

RNAV (GPS) RWY 31

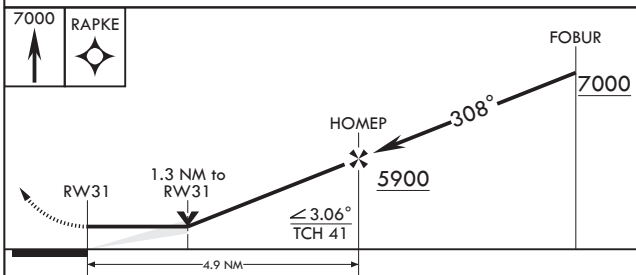
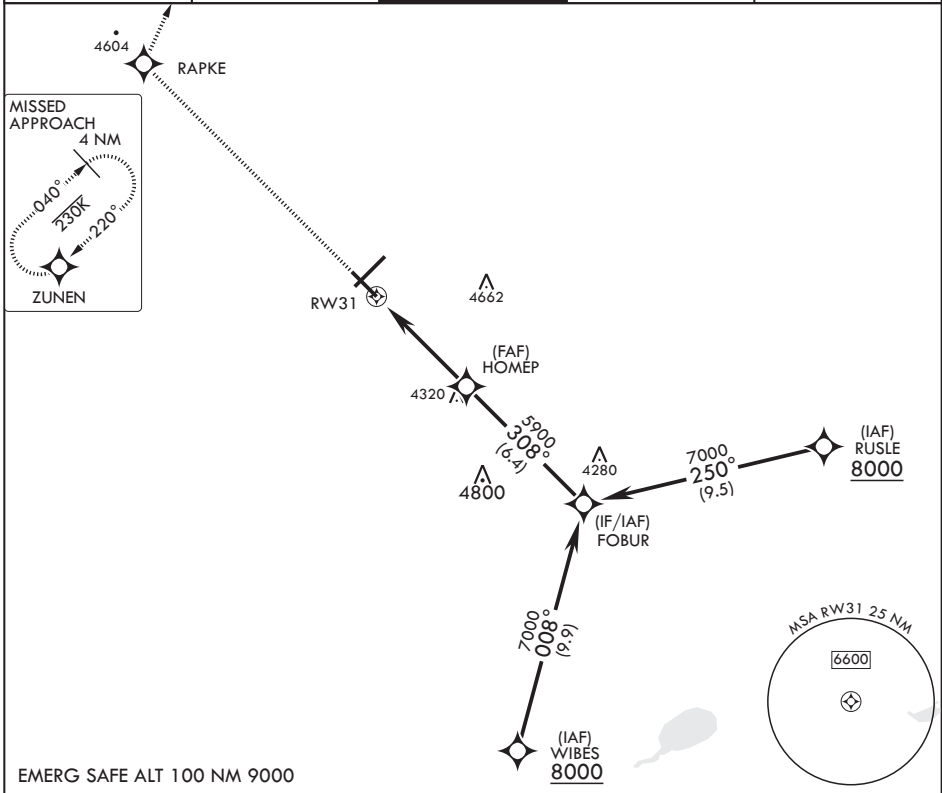
APCH CRS 308°	Rwy Idg TDZE Arprt Elev	8196 4270 4295
-------------------------	-------------------------------	---

- (USAF)

CANNON AFB (KCVS)

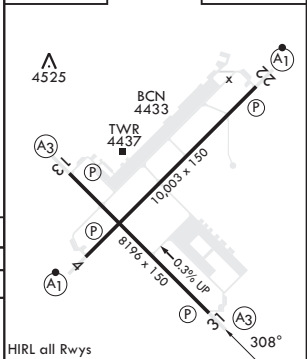
RNP APCH	SSALR	MISSED APPROACH: Climb to 7000 direct RAPKE, then turn right to ZUNEN and hold.
----------	-------	---

ATIS 119.1 269.9	CANNON APP CON 118.425 352.1	TOWER 120.4 270.25	GND CON 121.9 275.8	CLNC DEL 120.2 293.225
----------------------------	--	------------------------------	-------------------------------	----------------------------------



ELEV 4295	TDZE 4270
-----------	-----------

CATEGORY	A	B	C	D	E
LNVA MDA*	4720-½	450 (500-½)	4720-⅞	450	(500-⅞)
C CIRCLING	4840-1	545 (600-1)	4860-1½ 565 (600-1½)	5000-2¼ 705 (800-2¼)	5020-2½ 725 (800-2½)



CLOVIS, NEW MEXICO

34°23'N - 103°19'W

CANNON AFB (KCVS)

Amdt 5 28DEC23

RNAV (GPS) RWY 31

SW-1, 05 SEP 2024 to 03 OCT 2024

SW-1, 05 SEP 2024 to 03 OCT 2024