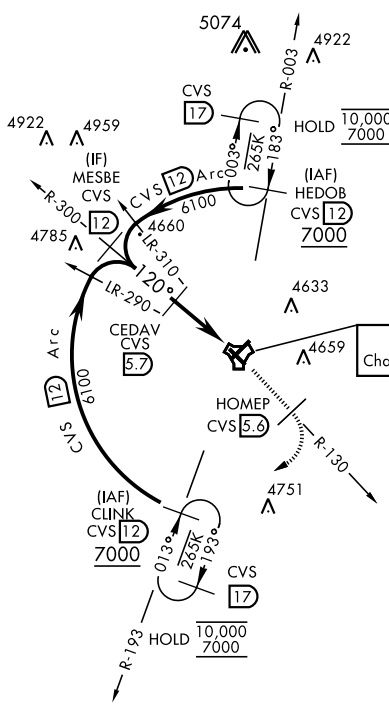


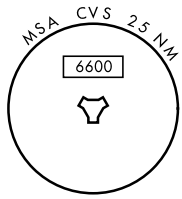
# TACAN RWY 13

TACAN CVS Chan <b>53</b>	APCH CRS <b>120°</b>	Rwy Idg <b>8196</b> TDZE <b>4294</b> Arprt Elev <b>4295</b>	AL-512 [USAF]	CANNON AFB (KCVS)
▼ * When ALS inop, increase CAT AB vis to 1 mile, CAT CDE vis to 1½ miles.			SSALR (A3)	† MISSED APPROACH: Climb to 6000 out CVS TACAN R-130 to 5.6 DME (HOMEP) then turn right climbing to 7000 intercept CVS R-193 to 12 DME (CLINK) and hold.
ATIS <b>119.1 269.9</b>	CANNON APP CON <b>118.425 352.1</b>	CANNON TOWER <b>120.4 270.25</b>	GND CON <b>121.9 275.8</b>	CLNC DEL <b>120.2 293.225</b>



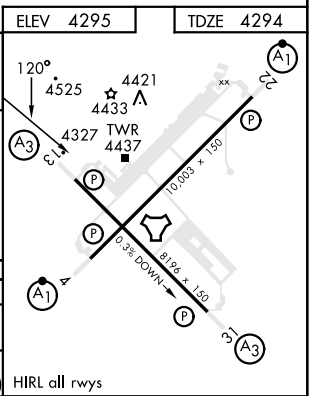
† Missed approach requires use of RNAV or ATC radar monitoring.

CANNON  
Chan 53 CVS



EMERG SAFE ALT 100 NM 9000

	MESBE R-300 12 6100	CEDAV 5.7	6000 CVS R-130	HOMEP CVS R-130 5.6	7000	CLINK CVS R-193 12
	120°	6000	3.13° TCH 37	5 NM	0.1	TACAN
CATEGORY	A	B	C	D	E	
S-13*	4800-¾	506 (600-¾)	4800-1	506	(600-1)	
CIRCLING	4840-1	545 (600-1)	4860-1½ 565 (600-1½)	5000-2¼ 705 (800-2¼)	5020-2½ 725 (800-2½)	



# TACAN RWY 13

SW-1, 05 SEP 2024 to 03 OCT 2024

SW-1, 05 SEP 2024 to 03 OCT 2024