

APP CRS	Rwy Idg	<b>4498</b>
<b>348°</b>	TDZE	<b>1158</b>
	Apt Elev	<b>1166</b>

# RNAV (GPS) RWY 35

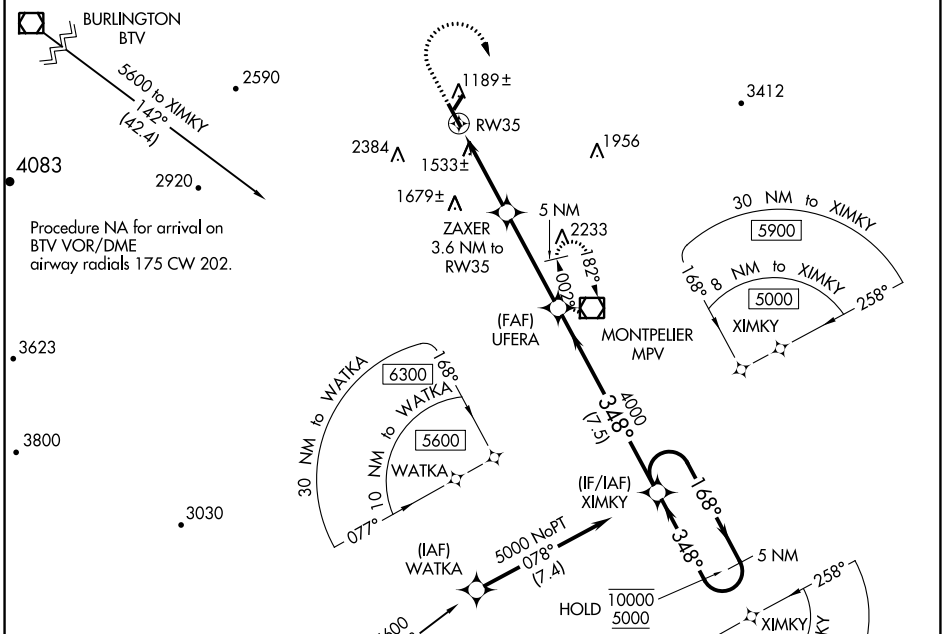
EDWARD F KNAPP STATE (MPV)

RNP APCH:

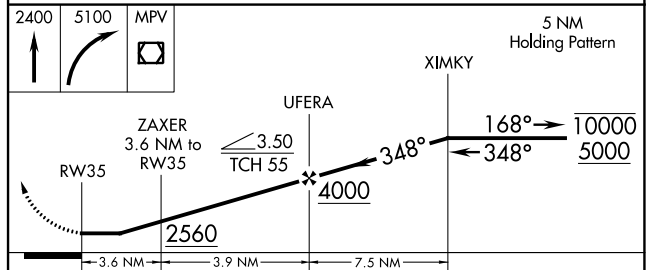
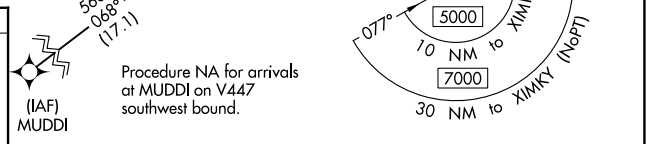
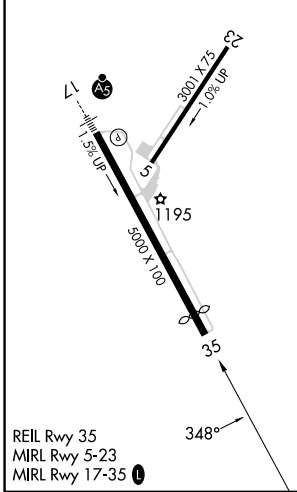
**▼** Rwy 35 helicopter visibility reduction below 1 SM NA.  
**▲ NA** When local altimeter setting not received, procedure NA.  
**☉** -20°C Straight-in Rwy 35 NA at night, Circling Rwy 5, 35 NA at night.

**MISSED APPROACH:** (Do not exceed 225K)  
 Climb to 2400 then climbing right turn to 5100 direct MPV VOR/DME and hold, continue climb-in-hold to 5100.

ASOS <b>132.675</b>	BOSTON CENTER <b>135.7 282.2</b>	UNICOM <b>122.8 (CTAF) 0</b>
------------------------	-------------------------------------	---------------------------------



ELEV 1166	TDZE 1158
-----------	-----------



CATEGORY	A	B	C	D
LNAV MDA	1940-1 782 (800-1)	1940-1¼ 782 (800-1¼)	1940-2½ 782 (800-2½)	782 (800-2½)
<b>☑</b> CIRCLING	1980-1¼	814 (900-1¼)	2700-3 1534 (1600-3)	2900-3 1734 (1800-3)

NE-1, 05 SEP 2024 to 03 OCT 2024

NE-1, 05 SEP 2024 to 03 OCT 2024