

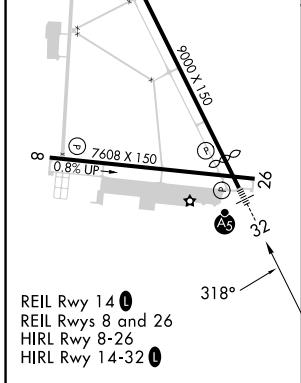
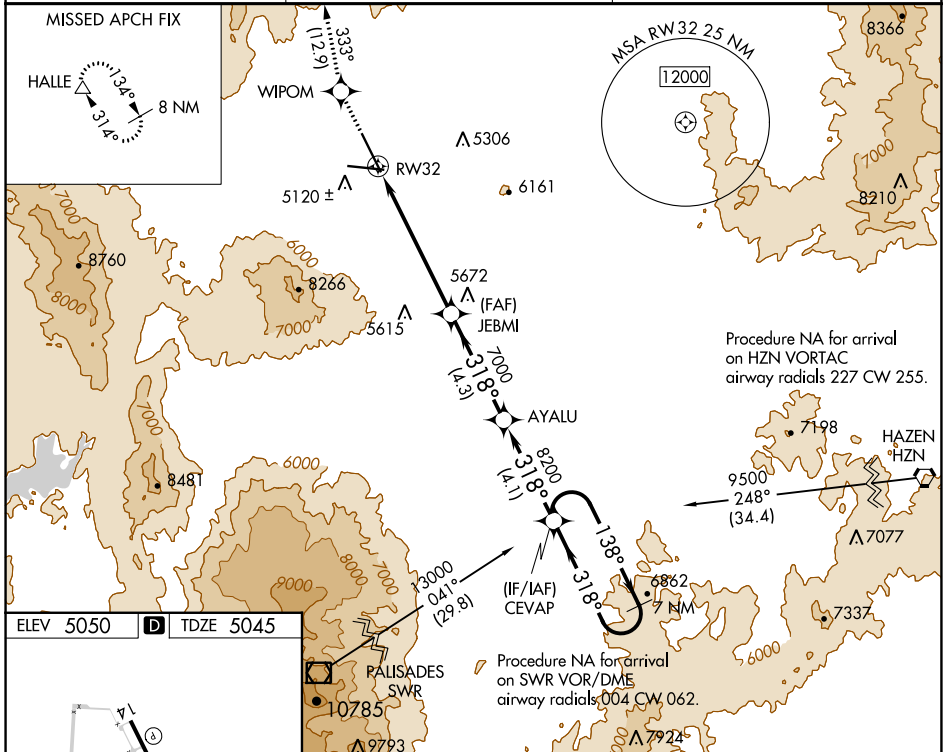
WAAS CH <b>60920</b> <b>W32A</b>	APP CRS <b>318°</b>	Rwy Idg TDZE Apt Elev	<b>7800</b> <b>5045</b> <b>5050</b>
--	------------------------	-----------------------------	---

# RNAV (GPS) RWY 32

RENO/STEAD (RTS)

<p><b>⚠</b> When VGSi inoperative, Circling Rwy 8 NA at night. DME/DME RNP-0.3 NA. When local altimeter setting not received, use Reno/Tahoe Intl altimeter setting and increase all DA 115 feet and all MDA 120 feet. Inoperative table does not apply. Circling NA for Cat D southwest of Rwy 14-32.</p>	<p><b>MALSR</b></p>	<p><b>MISSED APPROACH:</b> Climb to 14000 direct WIPOM and on track 333° to HALLE and hold, continue climb-in-hold to 14000.</p>
--	---------------------	--

AWOS-3 <b>135.175</b>	NORCAL APP CON <b>126.3 353.9</b>	UNICOM <b>122.7 (CTAF)</b>
--------------------------	--------------------------------------	-------------------------------



14000	WIPOM $\diamond$	tr 333°	HALLE $\triangle$	AYALU	CEVAP	7 NM Holding Pattern
				7000	8200	9400
				318°	138°	318°
						GP 3.00° TCH 40

CATEGORY	A	B	C	D
LPV DA	6533-6 1488 (1500-6)			
LNAV MDA	6840-1¼ 1795 (1800-1¼)	6840-1½ 1795 (1800-1½)	6840-3 1795 (1800-3)	
<b>C</b> CIRCLING	6840-1¼ 1790 (1800-1¼)	6840-1½ 1790 (1800-1½)	6840-3 1790 (1800-3)	

SW-4, 05 SEP 2024 to 03 OCT 2024

SW-4, 05 SEP 2024 to 03 OCT 2024