

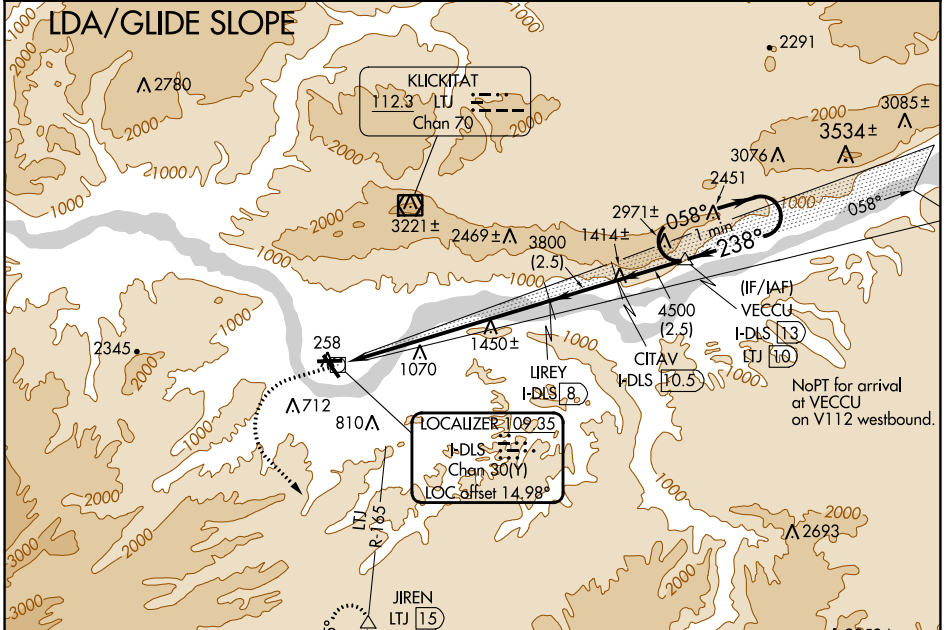
LOC/DME I-DLS 109.35 Chan 30(Y)	APP CRS 238°	Rwy Idg TDZE 4451 243 Apt Elev 247
--	------------------------	---

LDA/DME RWY 25

COLUMBIA GORGE RGNL/THE DALLES MUNI(DLS)

<p>When local altimeter setting not received, procedure NA. Glide slope provided by standard glide slope equipment.</p>	<p>MISSED APPROACH: Climb to 1600 then climbing left turn to 7000 on heading 120° and LTJ VOR/DME R-165 to JIREN/LTJ 15 DME and hold, continue climb-in-hold to 7000.</p>	
---	---	--

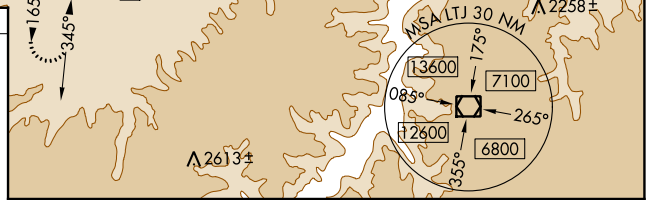
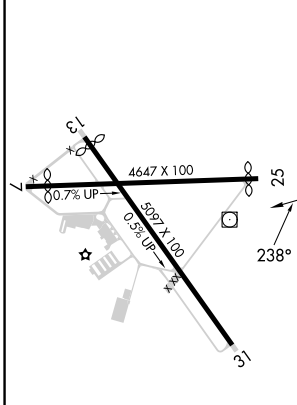
ASOS 135.175	SEATTLE CENTER 119.65 257.6	UNICOM 123.0 (CTAF) 0
------------------------	---------------------------------------	---------------------------------



NW-1, 05 SEP 2024 to 03 OCT 2024

NW-1, 05 SEP 2024 to 03 OCT 2024

ELEV 247	TDZE 243
----------	----------



1600	7000	LTJ R-165	JIREN	Use I-DLS DME when on the localizer course.
↑	hdg 120°			VECCU I-DLS 13
				One Minute Holding Pattern
		UREY I-DLS 8	CITAV I-DLS 10.5	5300
		3800	4500	058° →
		3800		← 238°
				GS 4.20°
				TCH 43
		7.9 NM	2.5 NM	2.5 NM

REIL Rwy 31 0	MIRL Rwy 7-25 and 13-31 0			
CATEGORY	A	B	C	D
S-LDA/GS 25	1368-3	1125 (1200-3)		NA