

WAAS CH <b>56530</b> <b>W08A</b>	APP CRS <b>076°</b>	Rwy Idg TDZE Apt Elev	<b>3953</b> <b>3942</b> <b>3942</b>
----------------------------------------	------------------------	-----------------------------	-------------------------------------------

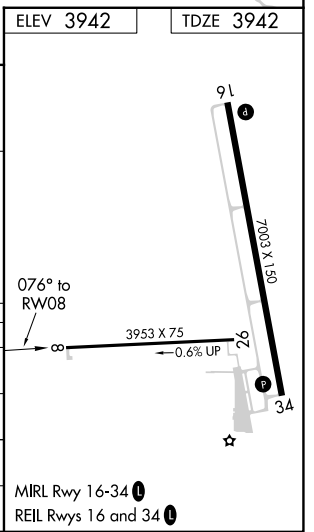
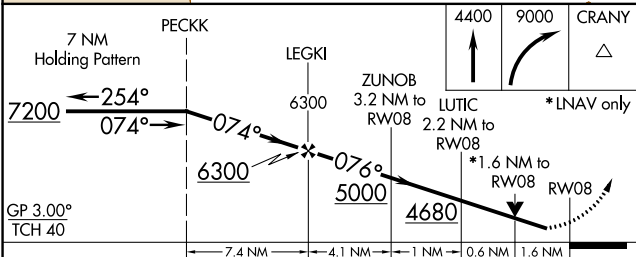
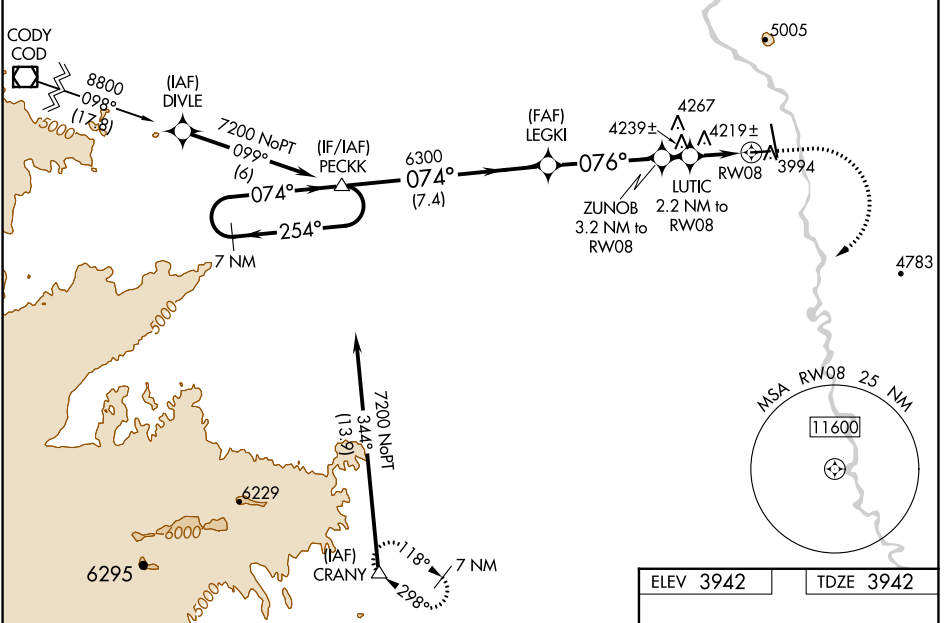
# RNAV (GPS) RWY 8

SOUTH BIG HORN COUNTY (GEY)

**⚠** DME/DME RNP-0.3 NA. Straight-in minimums NA at night. When local altimeter setting not received use Cowley/Lovell/Byron altimeter setting: increase LPV DA to 4279 feet and LNAV/VNAV DA to 4654 feet. Increase LPV visibility, all Cats 1/2 SM; increase all MDA 100 feet and LNAV Cats C/D visibility 1/4 SM. Rwy 8 helicopter visibility reduction below 3/4 SM NA. Baro-VNAV and VDP NA when using Cowley/Lovell/Byron altimeter setting. For uncompensated Baro-VNAV systems, LNAV/VNAV NA below -26°C (-14°F) or above 51°C (124°F).

**MISSED APPROACH:** Climb to 4400 then climbing right turn to 9000 direct CRANY and hold, continue climb-in-hold to 9000.

ASOS <b>135.325</b>	SALT LAKE CENTER <b>127.75 351.9</b>	CTAF <b>122.9</b>
------------------------	-----------------------------------------	----------------------



CATEGORY	A	B	C	D
LPV DA	4192-1 250 (300-1)			
LNAV/VNAV DA	4567-2 1/2 625 (700-2 1/2)			
LNAV MDA	4480-1 538 (600-1)		4480-1 1/2 538 (600-1 1/2)	
<b>C</b> CIRCLING	4680-1 738 (800-1)	4700-1 758 (800-1)	5320-3 1378 (1400-3)	5460-3 1518 (1600-3)

NW-1, 05 SEP 2024 to 03 OCT 2024

NW-1, 05 SEP 2024 to 03 OCT 2024