

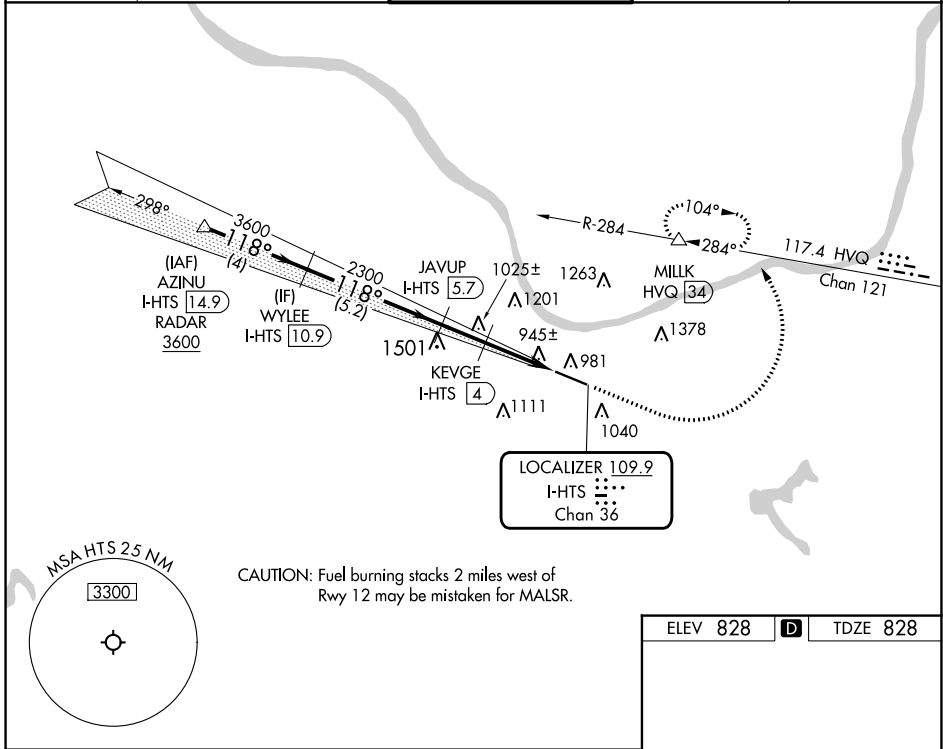
LOC/DME I-HTS 109.9 Chan 36	APP CRS 118°	Rwy Idg 6516 TDZE 828 Apt Elev 828
--	------------------------	---

ILS or LOC RWY 12

TRI-STATE/MILTON J FERGUSON FLD (HTS)

DME required. RADAR required for procedure entry.		MALSR 	MISSED APPROACH: Climb to 2800 then climbing left turn to 4000 on heading 005° and HVQ VOR/DME R-284 to MILK/HVQ VOR/DME 34 DME and hold, continue to climb-in-hold to 4000.
 For inop ALS, increase S-LOC 12 Cats C and D visibility to RVR 5500. *RVR 1800 authorized with use of FD or AP or HUD to DA.			

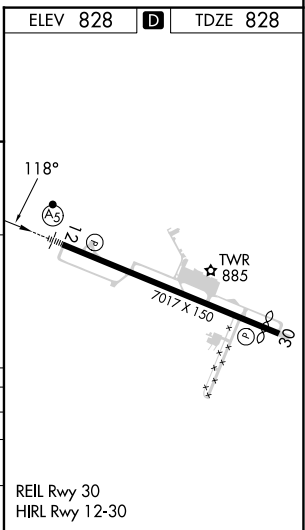
ATIS 125.2	HUNTINGTON APP CON 119.75 270.1	HUNTINGTON TOWER 118.5 270.1	GND CON 121.9	CLNC DEL 118.05
----------------------	---	--	-------------------------	---------------------------



NE-4, 05 SEP 2024 to 03 OCT 2024

NE-4, 05 SEP 2024 to 03 OCT 2024

AZINU I-HTS 14.9 RADAR WYLEE I-HTS 10.9 JAVUP I-HTS 5.7 KEVGE I-HTS 4 I-HTS 2.2 I-HTS 1.3	2800 4000 hdg 005°	HVQ R-284 MILK Δ		
3600 118° 3600 2300 1760 GS 3.00° TCH 36	4 NM 5.2 NM 1.7 NM 1.8 NM 1 NM			
CATEGORY	A	B	C	D
S-ILS 12*	1028/24 200 (200-½)			
S-LOC 12	1200/24	372 (400-½)	1200/35	372 (400-⅝)
CIRCLING	1300-1 472 (500-1)	1380-1 552 (600-1)	1520-2 692 (700-2)	1740-3 912 (1000-2)



ILS or LOC RWY 12