

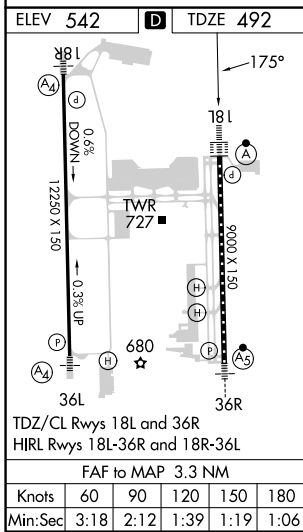
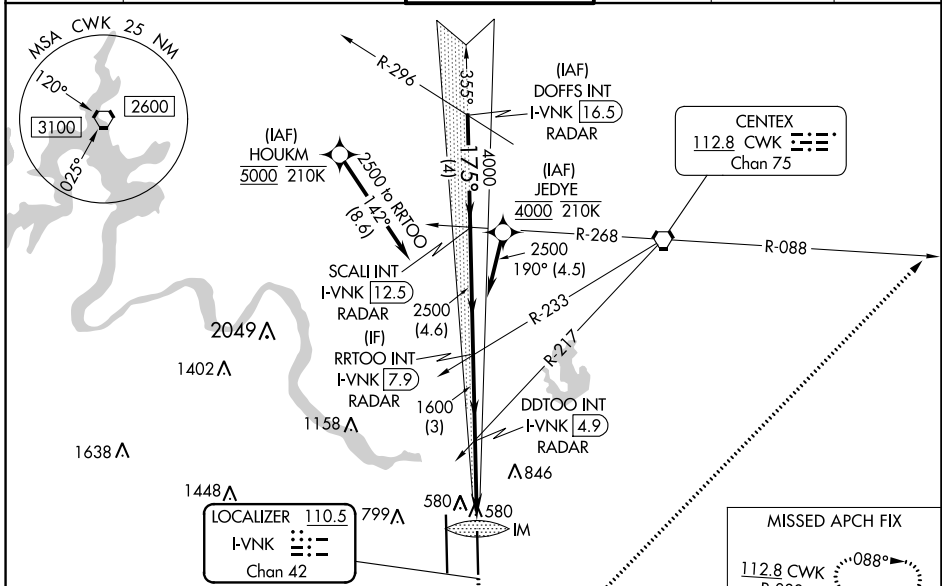
LOC/DME I-VNKG <b>110.5</b> Chan 42	APP CRS <b>175°</b>	Rwy Idg TDZE Apt Elev <b>9000</b> <b>492</b> <b>542</b>
---	------------------------	--

# ILS or LOC RWY 18L

AUSTIN-BERGSTROM INTL (AUS)

RNP APCH-GPS. From HOUKM or JEDYE.	ALSIF-2 	MISSED APPROACH: Climb to 1000 then climbing left turn to 3000 on heading 040° and CWK VORTAC R-088 to HOOKK/CWK 17 DME and hold.
RADAR required for procedure entry from DOFFS. DME required.		
<p>Simultaneous approach authorized. For inop ALS, increase S-ILS-18L Cat E visibility to RVR 4000, and S-LOC-18L Cats C, D, and E visibility to RVR 5500.</p>		

D-ATIS <b>124.4</b>	AUSTIN APP CON <b>127.225 317.65</b> (EAST) <b>120.875 270.25</b> (SOUTH) <b>119.0 370.85</b> (WEST)	AUSTIN TOWER <b>121.0 281.5</b>	GND CON <b>121.9 348.6</b>	CLNC DEL <b>125.5 263.0</b>	CPDLC
------------------------	---	------------------------------------	-------------------------------	--------------------------------	-------



VGS1 and ILS glidepath not coincident (VGS1 Angle 3.00/TCH 74). DOFFS INT I-VNKG 16.5 SCALI INT I-VNKG 12.5 RRTOO INT I-VNKG 7.9 DDTOO INT I-VNKG 4.9 I-VNKG 2.5 I-VNKG 1.6	1000	3000	CWK R-088 HOOKK			
	hdg 040°					
GS 3.00° TCH 61	4 NM	4.6 NM	3 NM	2.4 NM	0.8 NM	0.1 NM
CATEGORY	A	B	C	D	E	
S-ILS 18L	692/18 200 (200-½)					
S-LOC 18L	840/24	348 (300-½)	840/30			348 (300-¾)
CIRCLING	1040-1	1120-1	1200-1¾	1200-2	NA	
	498 (500-1)	578 (600-1)	658 (700-1¾)	658 (700-2)		

SC-3, 05 SEP 2024 to 03 OCT 2024

SC-3, 05 SEP 2024 to 03 OCT 2024