

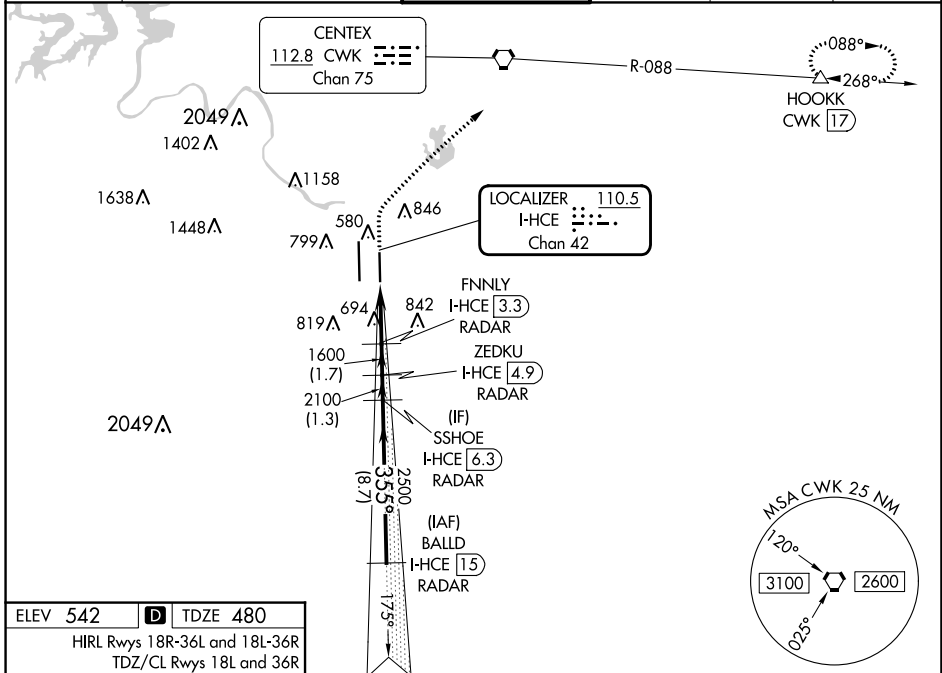
LOC/DME I-HCE <b>110.5</b> Chan <b>42</b>	APP CRS <b>355°</b>	Rwy Idg <b>9000</b> TDZE <b>480</b> Apt Elev <b>542</b>
---	------------------------	---

# ILS or LOC RWY 36R

AUSTIN-BERGSTROM INTL (AUS)

DME required. RADAR required for procedure entry.	MALSR 	MISSED APPROACH: Climb to 1000 then climbing right turn to 3000 on heading 030° and CWK VORTAC R-088 to HOOKK/CWK 17 DME and hold.
<p>Simultaneous approach authorized. For inop ALS, increase S-ILS 36R Cat E visibility to RVR 4000, S-LOC 36R Cat C/D/E visibility to 1/2 SM.</p>		

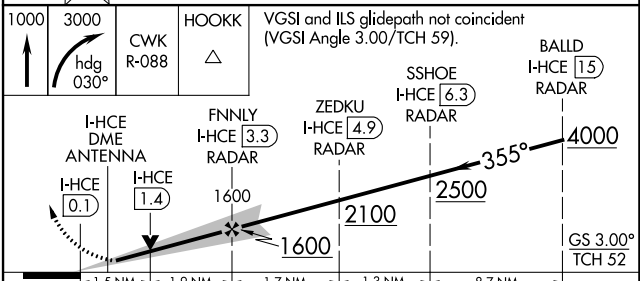
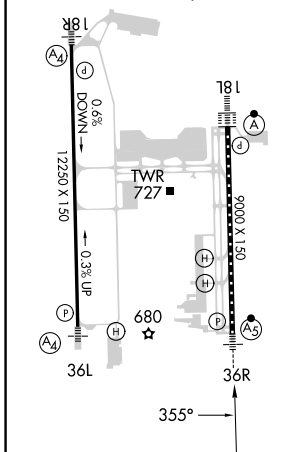
D-ATIS <b>124.4</b>	AUSTIN APP CON <b>127.225 317.65</b> (EAST) <b>120.875 270.25</b> (SOUTH) <b>119.0 370.85</b> (WEST)	AUSTIN TOWER <b>121.0 281.5</b>	GND CON <b>121.9 348.6</b>	CLNC DEL <b>125.5 263.0</b>	CPDLC
------------------------	---	------------------------------------	-------------------------------	--------------------------------	-------



SC-3, 05 SEP 2024 to 03 OCT 2024

SC-3, 05 SEP 2024 to 03 OCT 2024

ELEV <b>542</b>	<b>D</b> TDZE <b>480</b>
HIRL Rwy's 18R-36L and 18L-36R TDZ/CL Rwy's 18L and 36R	



CATEGORY	A	B	C	D	E
S-ILS 36R	680/18 200 (200-1/2)				
S-LOC 36R	1000/24	520 (500-1/2)	1000/55		520 (500-1)
<b>C</b> CIRCLING	1040-1 498 (500-1)	1120-1 578 (600-1)	1200-1 3/4 658 (700-1 1/4)	1200-2 658 (700-2)	NA