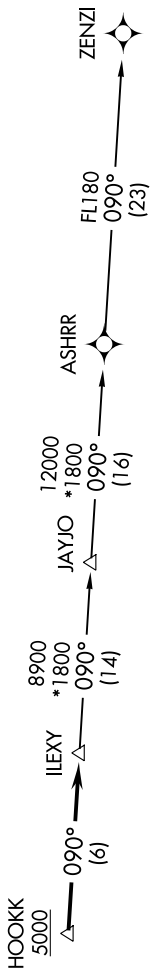


SC-3, 05 SEP 2024 to 03 OCT 2024

D-ATIS
124.4
CINC DEL
125.5 263.0
CPDIC
GND CON
121.9 348.6
AUSTIN TOWER
121.0 281.5
AUSTIN DEP CON
127.225 317.65

RNAV 1 - DME/DME/IRU or GPS.
RADAR required.

TOP ALTITUDE:
ASSIGNED BY ATC



TAKEOFF MINIMUMS

Rwys 18L/R: Standard.

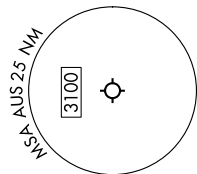
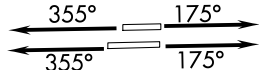
Rwys 36L/R: Standard with minimum climb of 240' per NM to 2600.



NOTE: Houston terminal area arrivals expect routing from ILEXY.

NOTE: JAYJO transition to join V306 only.

NOTE: Aircraft not destined the Houston terminal area or joining V306 must file the ZENZI transition.



NOTE: Chart not to scale.

DEPARTURE ROUTE DESCRIPTION

TAKEOFF RUNWAYS 18L/R: Climb on heading 175° or as assigned by ATC for vectors to cross HOOKK at or above 5000, thence, . . .
 TAKEOFF RUNWAYS 36L/R: Climb on heading 355° or as assigned by ATC for vectors to cross HOOKK at or above 5000, thence, . . .

. . . on track 090° to ILEXY, then on transition. Maintain altitude assigned by ATC. Expect filed altitude 10 minutes after departure.

JAYJO TRANSITION (ILEXY4.JAYJO)
 ZENZI TRANSITION (ILEXY4.ZENZI)

SC-3, 05 SEP 2024 to 03 OCT 2024