

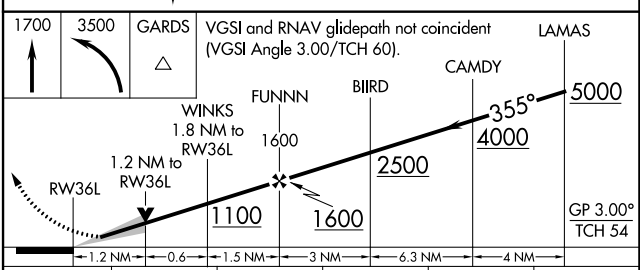
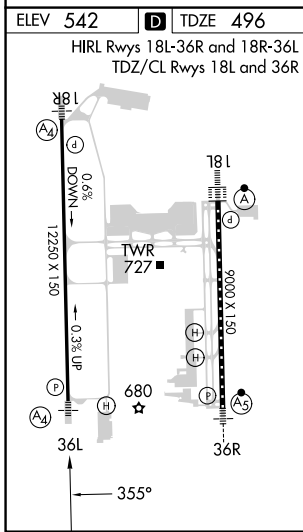
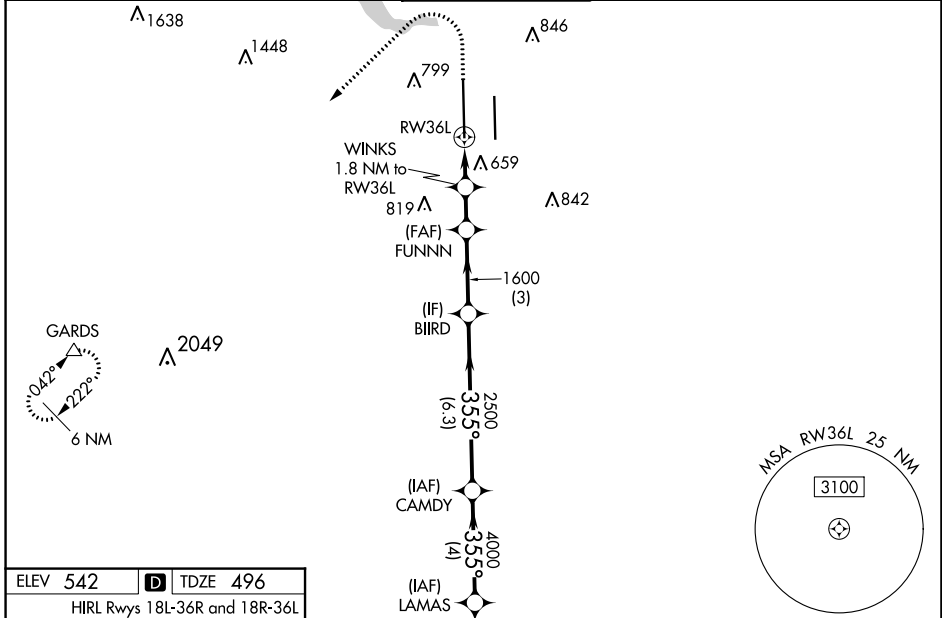
WAAS CH 90229 W36A	APP CRS 355°	Rwy Idg 12250 TDZE 496 Apt Elev 542
--	------------------------	--

RNAV (GPS) Y RWY 36L

AUSTIN-BERGSTROM INTL (AUS)

RNP APCH-GPS.		MALS	MISSED APPROACH: Climb to 1700 then climbing left turn to 3500 direct GARDS and hold.
Simultaneous approach authorized. Use of FD or AP required during simultaneous operations. LNAV procedure NA during simultaneous operations. For uncompensated Baro-VNAV systems, LNAV/VNAV NA below -5°C or above 54°C. Inop table does not apply to LPV all Cats. For inop ALS, increase LNAV/VNAV Cat E visibility to 1 3/8 SM, LNAV Cat E visibility to 1 1/4 SM.			

D-ATIS 124.4	AUSTIN APP CON 127.225 317.65 (EAST) 120.875 270.25 (SOUTH) 119.0 370.85 (WEST)	AUSTIN TOWER 121.0 281.5	GND CON 121.9 348.6	CLNC DEL 125.5 263.0	CPDLC
------------------------	---	------------------------------------	-------------------------------	--------------------------------	-------



CATEGORY	A	B	C	D	E
LPV DA		696/40	200 (200-3/4)		
LNAV/VNAV DA		970/60	474 (500-1 1/4)		
LNAV MDA	920/40	424 (400-3/4)	920/50	424 (400-1)	
C CIRCLING	1040-1 498 (500-1)	1120-1 578 (600-1)	1200-1 3/4 658 (700-1 3/4)	1200-2 658 (700-2)	NA