

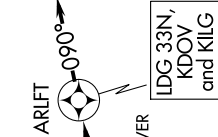
ARLFT TWO ARRIVAL (RNAV)

DOVER/CHESWOLD, DELAWARE

DOVER APP CON
132.425 257.875
33N AWOS-3
120.125
IIG ATIS
123.95
KDOV D-ATIS
127.825 273.5



NEW CASTLE



ARLFT

LDG 33N,
KDOV
and KILG

SMYRNA
ENO

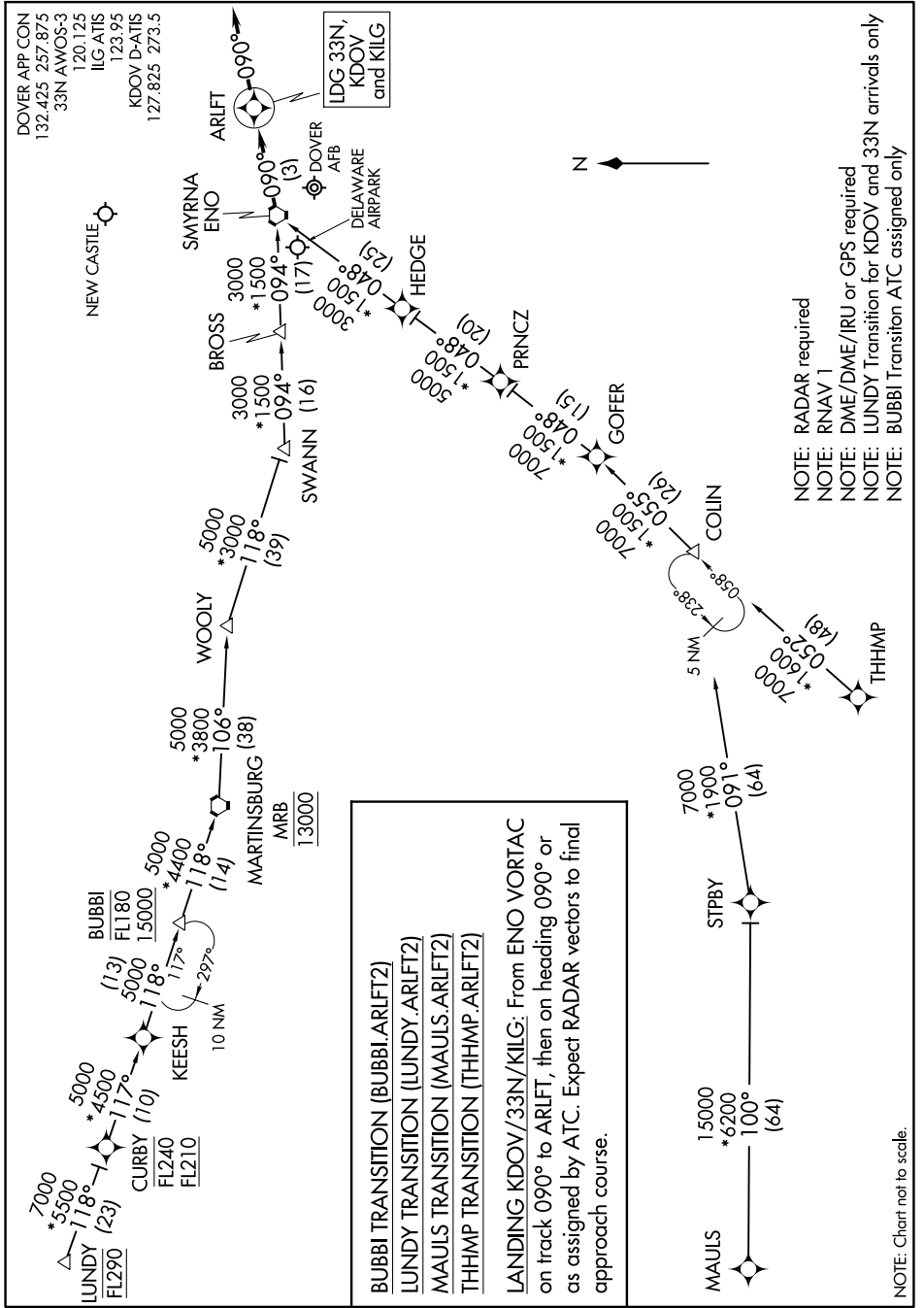


DOVER
AFB
DELAWARE
AIRPARK



N

NE-3, 05 SEP 2024 to 03 OCT 2024



- NOTE: RADAR required
- NOTE: RNAV 1
- NOTE: DME/DME/IRU or GPS required
- NOTE: LUNDY Transition for KDOV and 33N arrivals only
- NOTE: BUBBLI Transition ATC assigned only

BUBBLI TRANSITION (BUBBLI.ARLFT2)
LUNDY TRANSITION (LUNDY.ARLFT2)
MAULS TRANSITION (MAULS.ARLFT2)
THHMP TRANSITION (THHMP.ARLFT2)

LANDING KDOV/33N/KILG: From ENO VORTAC on track 090° to ARLFT, then on heading 090° or as assigned by ATC. Expect RADAR vectors to final approach course.

NOTE: Chart not to scale.

NE-3, 05 SEP 2024 to 03 OCT 2024

ARLFT TWO ARRIVAL (RNAV)

DOVER/CHESWOLD, DELAWARE