

| | | | |
|--------------|-------------|----------|------|
| LOC I-CNW | APP CRS | Rwy Idg | 8600 |
| 110.7 | 174° | TDZE | 470 |
| | | Apt Elev | 470 |

ILS or LOC RWY 17L

TSTC WACO (CNW)

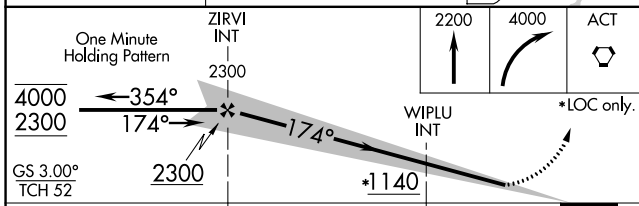
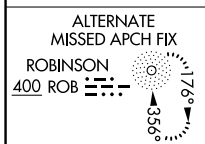
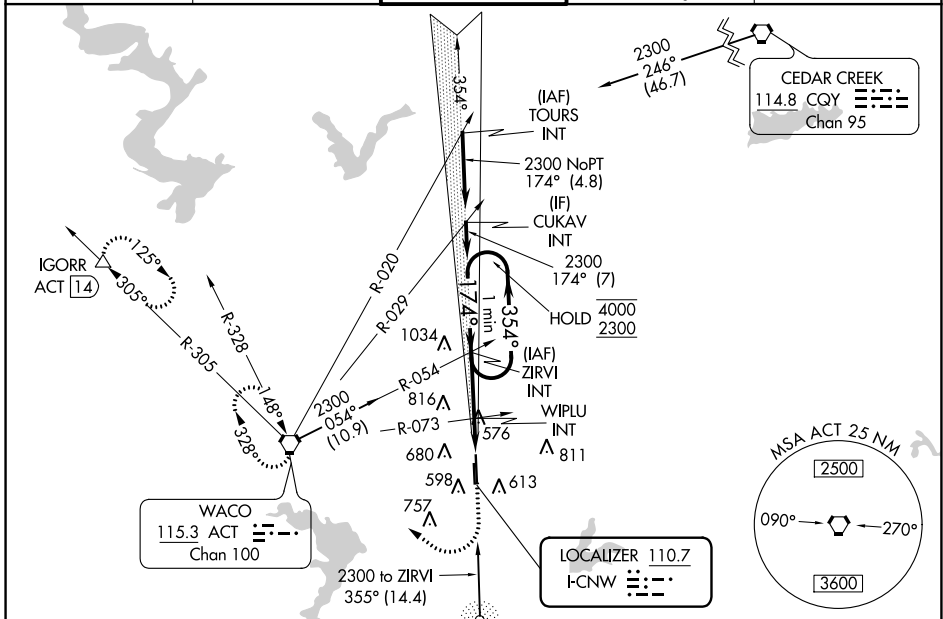
NA For inop ALS, increase S-ILS 17L Cat E visibility to ¾ SM, and S-LOC 17L Cat E to 1½ SM.

MALSR

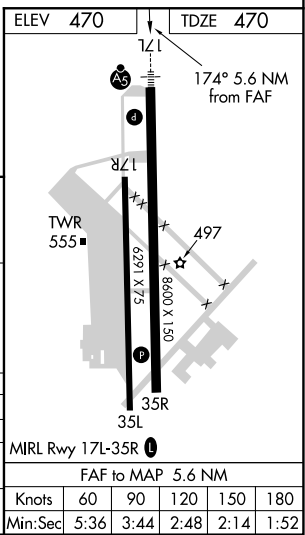


MISSED APPROACH: Climb to 2200 then climbing right turn to 4000 direct ACT VORTAC and hold.
(TACAN aircraft continue on ACT VORTAC R-305 to IGORR /ACT 14 DME and hold SE, RT, 305° inbound)

| | | | | |
|----------------|-----------------------|--------------------------|---------------|---------------|
| AWOS-3PT | WACO APP CON * | TSTC TOWER * | GND CON | UNICOM |
| 134.225 | 127.65 227.125 | 124.0(CTAF) 255.7 | 121.70 | 122.95 |



| | | | | | |
|-----------|----------------------|-----------------------|-------------------------|-----------------------|-------------------------|
| CATEGORY | A | B | C | D | E |
| S-ILS 17L | 670-½ 200 (200-½) | | | | |
| S-LOC 17L | 860-½ | 390 (400-½) | 860-⅝ 390 (400-⅝) | | |
| CIRCLING | 940-1 470 (500-1) | 1040-1 570 (600-1) | 1040-1½ 570 (600-1½) | 1120-2 650 (700-2) | 1180-2½ 710 (800-2½) |



SC-3, 05 SEP 2024 to 03 OCT 2024

SC-3, 05 SEP 2024 to 03 OCT 2024