

NDB GTP <b>245</b>	APP CRS <b>225°</b>	Rwy Idg <b>5504</b>
		TDZE <b>242</b>
		Apt Elev <b>264</b>

# NDB RWY 22

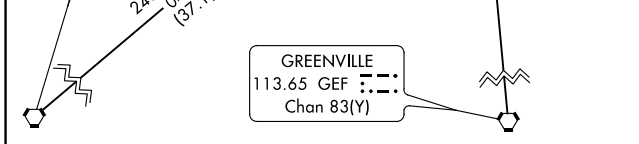
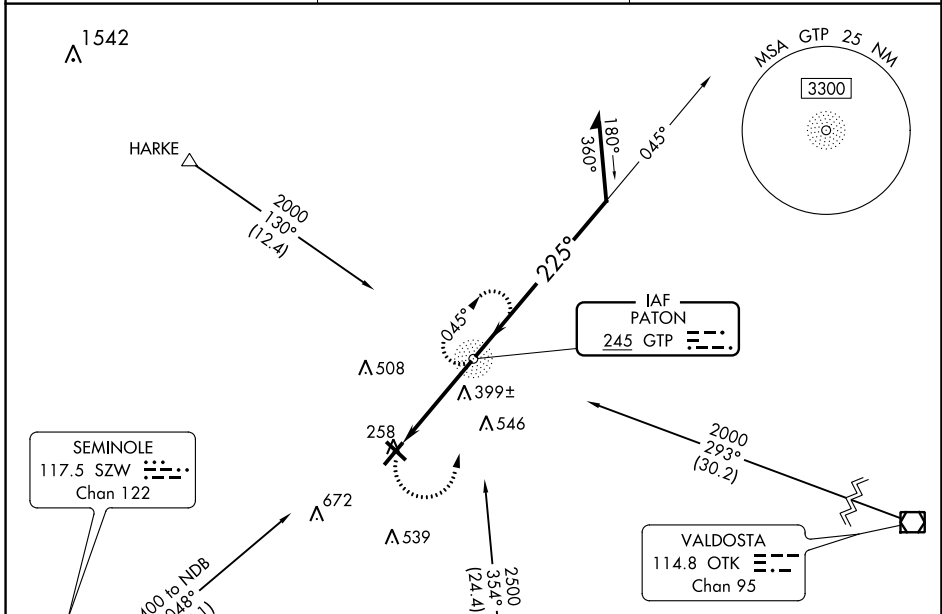
THOMASVILLE RGNL (TVI)

**⚠** When local altimeter setting not received, use Valdosta altimeter setting and increase all MDA 100 feet, increase S-22 Cats C/D visibility  $\frac{3}{8}$  SM and Circling Cats C/D visibility  $\frac{1}{4}$  SM. For inop ALS, increase S-22 Cats C/D visibility to  $1\frac{3}{8}$  SM. For inop ALS when using the Valdosta altimeter setting, increase S-22 Cat D visibility to  $1\frac{1}{8}$  SM. Circling Rwy 4, 14, 32 NA at night.

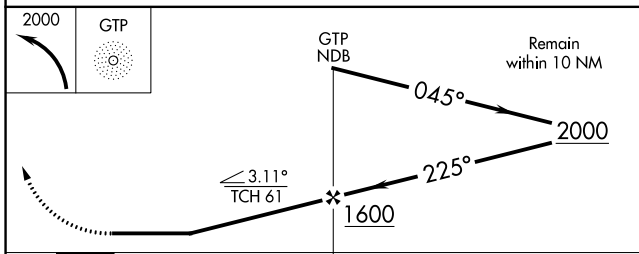
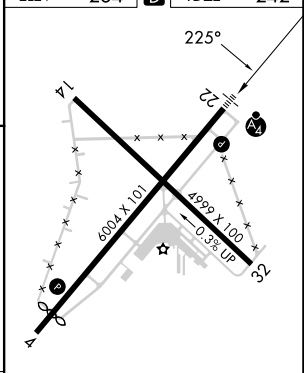
**MALSF**  
 MALSF

**MISSED APPROACH:**  
 Climbing left turn to 2000  
 direct GTP NDB and hold,  
 continue climb-in-hold to 2000.

AWOS-3PT <b>119.175</b>	VALDOSTA APP CON * <b>126.6 285.6</b>	UNICOM <b>123.075 (CTAF)</b>
----------------------------	--	---------------------------------



ELEV 264	<b>D</b>	TDZE 242
----------	----------	----------



CATEGORY	A	B	C	D
S-22	700- $\frac{3}{4}$ 458 (500- $\frac{3}{4}$ )		700-1 458 (500-1)	
<b>C</b> CIRCLING	700-1 436 (500-1)	800-1 536 (600-1)	900-1 $\frac{3}{4}$ 636 (700-1 $\frac{3}{4}$ )	1040-2 $\frac{1}{2}$ 776 (800-2 $\frac{1}{2}$ )

LIRL Rwy 14-32  
 LIRL Rwy 4-22

FAF to MAP 4 NM

Knots	60	90	120	150	180
Min:Sec	4:00	2:40	2:00	1:36	1:20

SE-4, 05 SEP 2024 to 03 OCT 2024

SE-4, 05 SEP 2024 to 03 OCT 2024