


MILTON, FLORIDA

# TACAN RWY 14

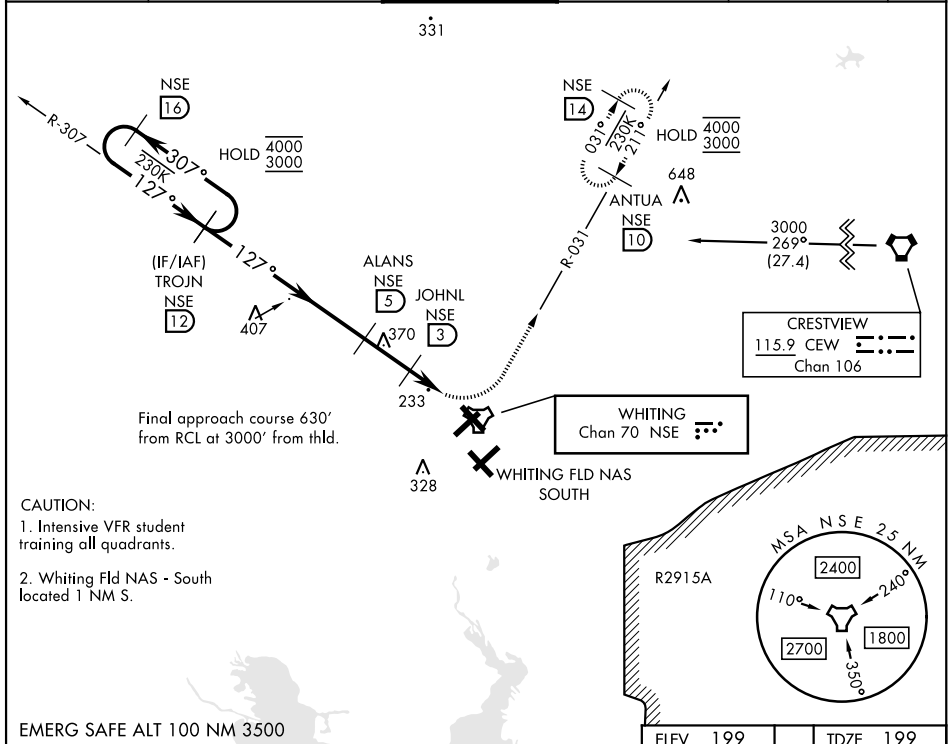
TACAN NSE Chan <b>70</b>	APCH CRS <b>127°</b>	Rwy Ldg TDZE Arpt Elev <b>6001</b> <b>199</b> <b>199</b>
-----------------------------	-------------------------	--

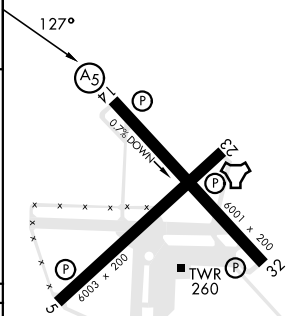
[USN]

WHITING FLD NAS - NORTH (KNSE)

<b>⚠</b> * Circling not authorized S of Rwy 5 and 32.	MALSR 	MISSED APPROACH: Climb to 600, then climbing left turn to 3000, intercept NSE TACAN R-031 to ANTUA and hold. Continue climb in hold. Contact Pensacola APP CON.
---	--	---

ATIS ★ <b>290.325</b>	PENSACOLA APP CON <b>127.35 278.8</b>	NORTH WHITING TOWER ★ <b>121.4 306.925</b>	GND CON <b>251.15</b>	CLNC DEL <b>257.775</b>	ASR
--------------------------	--	--	--------------------------	----------------------------	-----



	ELEV 199	TDZE 199										
	600	3000	ANTUA NSE 10									
	↑	↙ NSE R-031										
<table border="1"> <tr><td>600</td><td>3000</td><td>ANTUA NSE 10</td></tr> <tr><td>↑</td><td>↙ NSE R-031</td><td></td></tr> </table>	600	3000	ANTUA NSE 10	↑	↙ NSE R-031							
600	3000	ANTUA NSE 10										
↑	↙ NSE R-031											
	4000	3000										
	← 307°	→ 127°										
<table border="1"> <tr><td>4000</td><td>3000</td></tr> <tr><td>← 307°</td><td>→ 127°</td></tr> </table>	4000	3000	← 307°	→ 127°	<table border="1"> <tr><td>1700</td></tr> <tr><td>3.14 TCH 51</td></tr> </table>	1700	3.14 TCH 51	<table border="1"> <tr><td>1000</td></tr> <tr><td>2 NM</td></tr> <tr><td>1.8 NM</td></tr> </table>	1000	2 NM	1.8 NM	
4000	3000											
← 307°	→ 127°											
1700												
3.14 TCH 51												
1000												
2 NM												
1.8 NM												
CATEGORY	A	B	C	D								
S-14		500 - 1	301	(400 - 1)								
CIRCLING*	560-1 361 (400-1)	660-1 461 (500-1)	660-1½ 461 (500-1½)	760-2 561 (600-2)								
	HIRL all rwys											

MILTON, FLORIDA  
Amdt 5 28DEC23

30° 43' N-87° 01' W

WHITING FLD NAS - NORTH (KNSE)

# TACAN RWY 14

SE-3, 05 SEP 2024 to 03 OCT 2024

SE-3, 05 SEP 2024 to 03 OCT 2024