

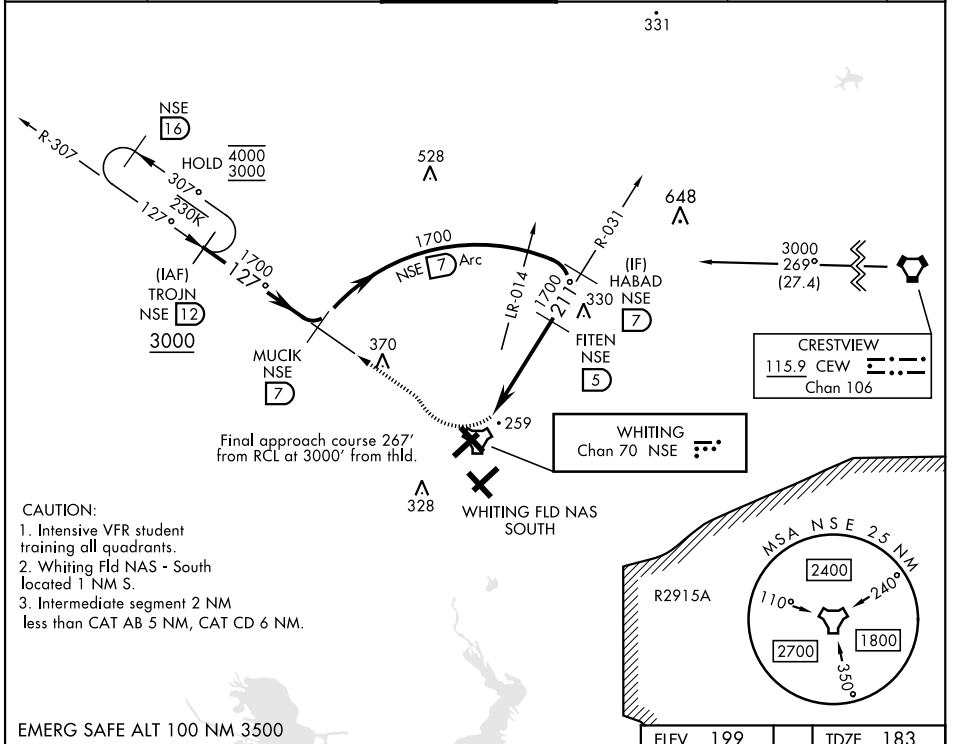
TACAN RWY 23

TACAN NSE Chan 70	APCH CRS 211°	Rwy ldg TDZE 183 Arprt Elev 199	[USN]	WHITING FLD NAS - NORTH (KNSE)
-----------------------------	-------------------------	---	-------	--------------------------------

*Circling not authorized S of Rwy 5 and 32.

 MISSED APPROACH: Climb to 600. Then climbing right turn to 3000. Intercept NSE TACAN R-307 to TROJN and hold. Continue climb in hold. Contact Pensacola APP CON.

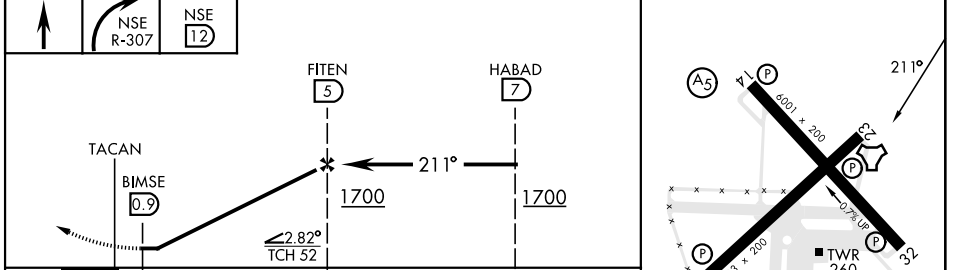
ATIS ★ 290.325	PENSACOLA APP CON 127.35 278.8	NORTH WHITING TOWER ★ 121.4 306.925	GND CON 251.15	CLNC DEL 257.775	ASR
--------------------------	--	--	--------------------------	----------------------------	-----



- CAUTION:**
- Intensive VFR student training all quadrants.
 - Whiting Fld NAS - South located 1 NM S.
 - Intermediate segment 2 NM less than CAT AB 5 NM, CAT CD 6 NM.

EMERG SAFE ALT 100 NM 3500

ELEV 199	TDZE 183
----------	----------



CATEGORY	A	B	C	D
S-23		520-1	337 (400-1)	
CIRCLING*	560-1 361 (400-1)	660-1 461 (500-1)	660-1½ 461 (500-1½)	760-2 561 (600-2)

HIRL all rwy's

TACAN RWY 23

SE-3, 05 SEP 2024 to 03 OCT 2024

SE-3, 05 SEP 2024 to 03 OCT 2024