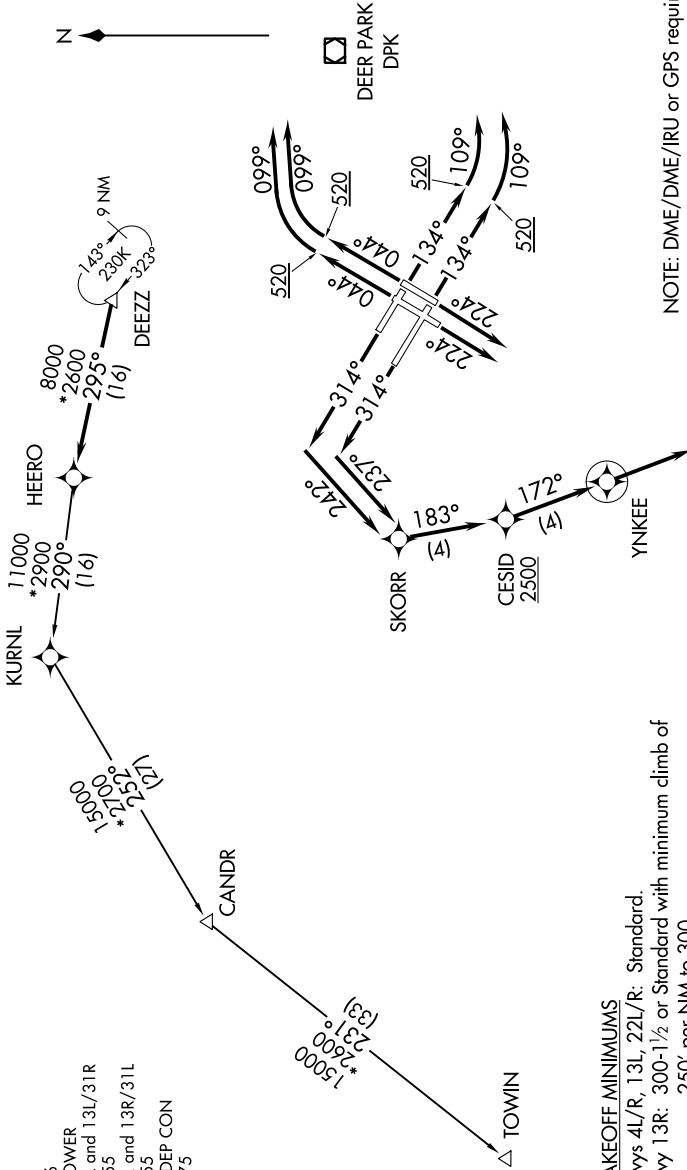


DEZZ FIVE DEPARTURE (RNAV)

**TOP ALTITUDE:
5000**



NOTE: DME/DME/IRU or GPS required.
 NOTE: Radar Required.
 NOTE: RNAV 1.
 NOTE: TOWIN transition ATC assigned only.

NOTE: Chart not to scale.

NE-2, 05 SEP 2024 to 03 OCT 2024

NE-2, 05 SEP 2024 to 03 OCT 2024

D-ATIS 128.725
 CLNC DEL 135.05 348.6
 GND CON 121.9 348.6
 KENNEDY TOWER 119.1 281.55
 Rwy 4R/22L and 13L/31R 123.9 281.55
 Rwy 4L/22R and 13R/31L 135.9 353.75
 NEW YORK DEP CON 135.9 353.75

TAKEOFF MINIMUMS
 Rwys 4L/R, 13L, 22L/R: Standard.
 Rwy 13R: 300-1/2 or Standard with minimum climb of 250' per NM to 300.
 Rwys 31L/R: Standard with minimum climb of 500' per NM to 1400.

(NARRATIVE ON FOLLOWING PAGE)

DEZZ FIVE DEPARTURE (RNAV)