

LOC/DME I-JOC <b>109.5</b> Chan <b>32</b>	APP CRS <b>221°</b>	Rwy Idg <b>7795</b> TDZE <b>13</b> Apt Elev <b>13</b>
---	------------------------	---

# ILS or LOC RWY 22R

JOHN F KENNEDY INTL (JFK)

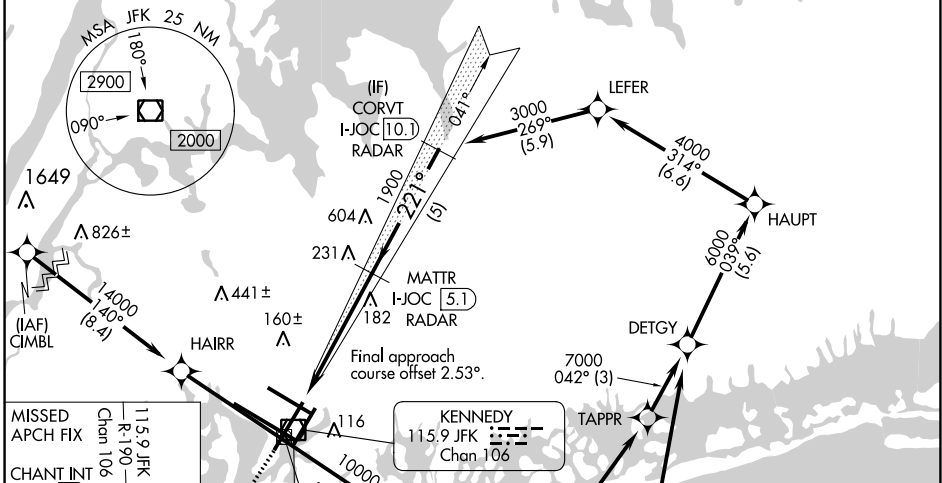
RNAV 1-GPS or RADAR required for procedure entry.

From CIMBL, NRTON: RNAV 1-GPS required. DME or RADAR required.

MISSED APPROACH: Climb to 2000 then climbing left turn to 4000 on JFK VOR/DME R-190 to CHANT INT and hold.

**Simultaneous approach authorized.**

D-ATIS (ARR/DEP) (ARR-NE) (ARR-SW) <b>128.725 117.7 115.4</b>	NEW YORK APP CON <b>128.125 269.0</b>	KENNEDY TOWER Rwys 4R/22L and 13L/31R <b>119.1 281.55</b> Rwys 4L/22R and 13R/31L <b>123.9 281.55</b>	GND CON <b>121.9 348.6</b>	CLNC DEL <b>135.05 348.6</b>	CPDLC
---	--	---	-------------------------------	---------------------------------	-------



MISSED APCH FIX  
Chan 106  
115.9 JFK  
R-190

CHANT INT  
JFK (19)  
R-088  
Chan 85  
113.8 RBV

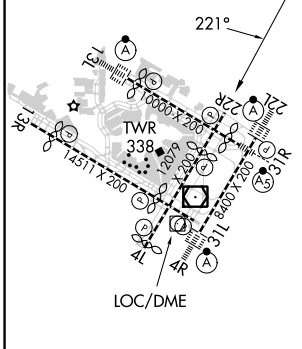
190°  
010°

ROUTING TO SAJUL (not to scale)

SAJUL  
10000  
05°  
(11.4)

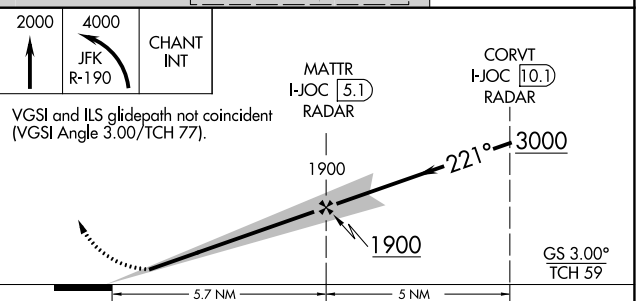
(IAF) NRTON

ELEV 13	<b>D</b>	TDZE 13
---------	----------	---------



LOCALIZER 109.5  
I-JOC  
Chan 32

SEE INSET FOR ROUTING TO SAJUL



RLS Rwys 13L and 13R  
HIRL all Rwys  
TDZ/CL Rwys 4L, 4R, 13L, 22L and 31R  
FAF to MAP 5.7 NM

Knots	60	90	120	150	180
Min:Sec	5:42	3:48	2:51	2:17	1:54

CATEGORY	A	B	C	D
S-ILS 22R	263/40 250 (300-¾)			
S-LOC 22R	460/55	447 (500-1)	460-1¾	447 (500-1¾)
<b>C</b> CIRCLING	640-1 627 (700-1)		680-1¾ 667 (700-1¾)	680-2 667 (700-2)

NE-2, 05 SEP 2024 to 03 OCT 2024

NE-2, 05 SEP 2024 to 03 OCT 2024