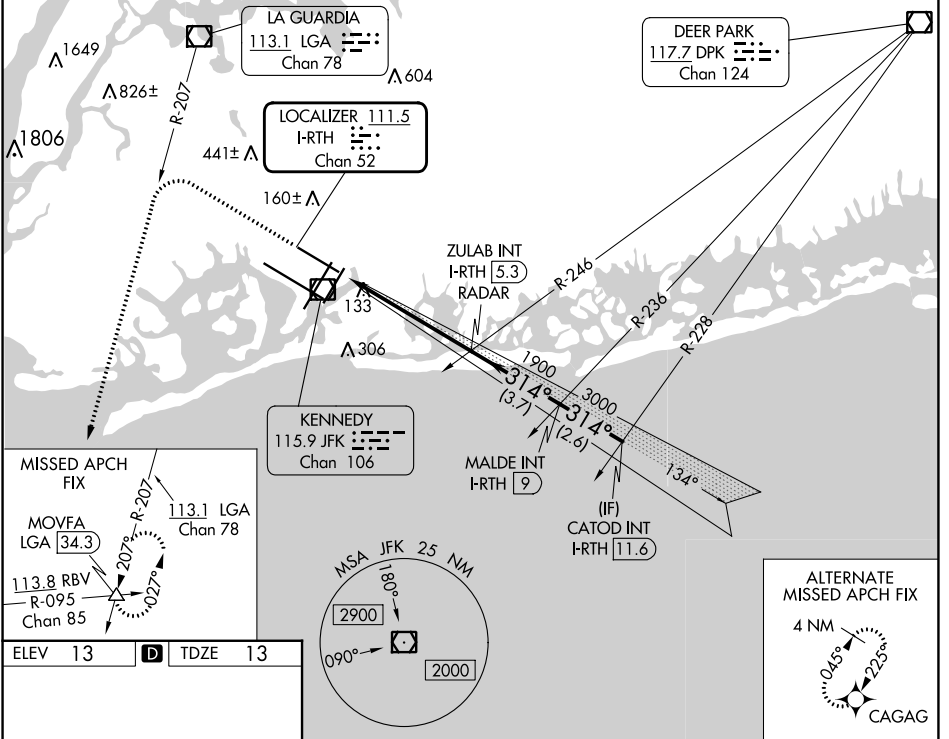


LOC/DME I-RTH 111.5 Chan 52	APP CRS 314°	Rwy Idg 8486 TDZE 13 Apt Elev 13
--	------------------------	---

ILS or LOC RWY 31R

JOHN F KENNEDY INTL (JFK)

RADAR required for procedure entry.		MALSR	MISSED APPROACH: Climb to 1800 then climbing left turn to 4000 on LGA VOR/DME R-207 to MOVFA INT/LGA 34.3 DME and hold.		
Simultaneous approach authorized.					
D-ATIS (ARR/DEP) (ARR-NE) (ARR-SW) 128.725 117.7 115.4	NEW YORK APP CON 128.125 269.0	KENNEDY TOWER Rwys 4R/22L and 13L/31R 119.1 281.55 Rwys 4L/22R and 13R/31L 123.9 281.55	GND CON 121.9 348.6	CLNC DEL 135.05 348.6	CPDLC



NE-2, 05 SEP 2024 to 03 OCT 2024

NE-2, 05 SEP 2024 to 03 OCT 2024

ELEV 13	D	TDZE 13
---------	----------	---------

1800	4000	LGA R-207	MOVFA △	VGSI and ILS glidepath not coincident (VGSI Angle 3.00°/TCH 54).	
* LOC only.		ZULAB INT I-RTH 5.3 RADAR	MALDE INT I-RTH 9	CATOD INT I-RTH 11.6	
		I-RTH 0.4	I-RTH 0.8	3000	GS 3.00° TCH 42
CATEGORY		A	B	C	D
S-ILS 31R		212/18		200 (200-½)	
S-LOC 31R		440/24 428 (500-½)		440/40 428 (500-¾)	
<input checked="" type="checkbox"/> CIRCLING		640-1 627 (700-1)		680-1¾ 667 (700-1¾) 680-2 667 (700-2)	

