

# PARCH THREE ARRIVAL (RNAV)

NE-2, 05 SEP 2024 to 03 OCT 2024

NEW YORK APP CON  
 125.7 269.0  
 JFK D-ATIS  
 128.725 (ARR/DEP)  
 117.7 (ARR-NE)  
 115.4 (ARR-SW)

## ARRIVAL ROUTE DESCRIPTION

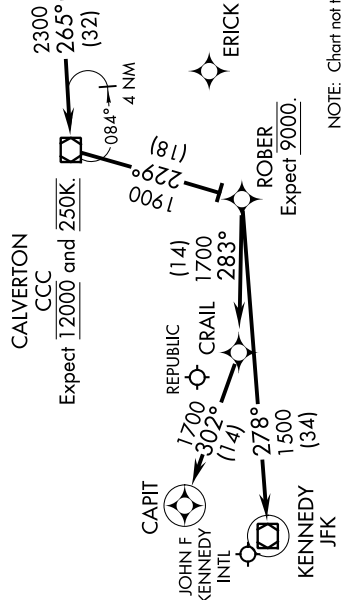
KENNEBUNK TRANSITION (ENE:PARCH3):  
 PLYMM TRANSITION (PLYMM:PARCH3):  
 SANDY POINT TRANSITION (SEY:PARCH3):

From PARCH via 265° track to CCC VOR/DME. Then via 229° track to ROBER. Thence....

LDG Rwy 4R/L, Rwy 13R/L, Rwy 31R/L: From ROBER via 278° track to JFK VOR/DME, expect radar vectors to final approach course.

LDG Rwy 22R/L: From ROBER via 283° track to CRAIL, then via 302° track to CAPIT, expect radar vectors to final approach course.

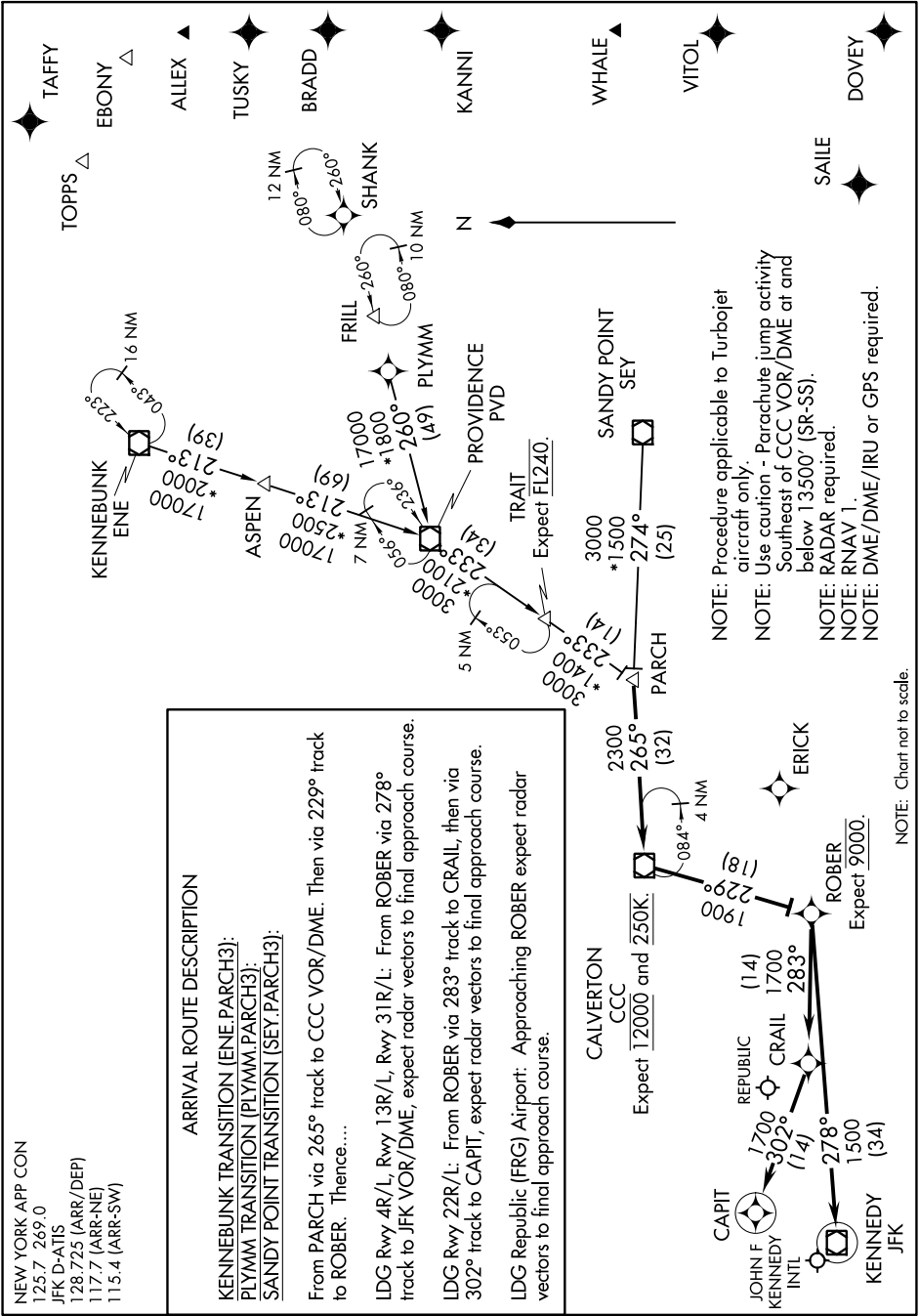
LDG Republic (FRG) Airport: Approaching ROBER expect radar vectors to final approach course.



NOTE: Chart not to scale.

NE-2, 05 SEP 2024 to 03 OCT 2024

# PARCH THREE ARRIVAL (RNAV)



NOTE: Procedure applicable to Turbojet aircraft only.  
 NOTE: Use caution - Parachute jump activity Southeast of CCC VOR/DME at and below 13500' (SR-SS).  
 NOTE: RADAR required.  
 NOTE: RNAV 1.  
 NOTE: DME/DME/IRU or GPS required.