

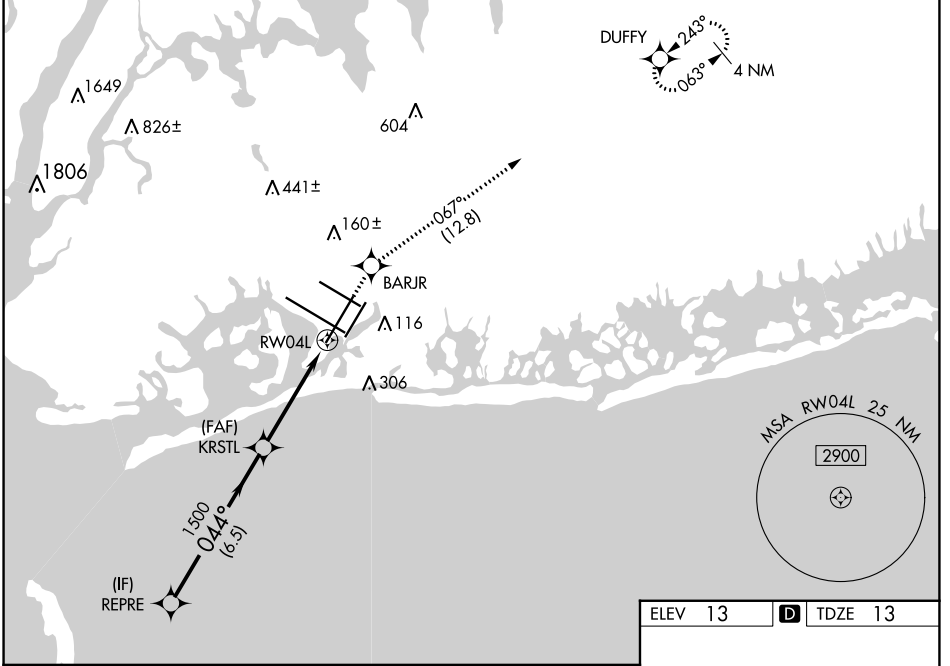
|  |                        |  |
|--|------------------------|--|
| WAAS<br>CH <b>77519</b><br><b>W04A</b> | APP CRS<br><b>044°</b> | Rwy Idg <b>11010</b><br>TDZE <b>13</b><br>Apt Elev <b>13</b> |
|--|------------------------|--|

# RNAV (GPS) Y RWY 4L

JOHN F KENNEDY INTL (JFK)

|   |  |
|---|--|
| RNP APCH.   | MISSED APPROACH: (Do not exceed 210K until BARJR) Climb to 3000 direct BARJR and track 067° to DUFFY and hold. |
| Simultaneous approach authorized. Use of FD or AP providing RNAV track guidance required during simultaneous operations. LNAV procedure NA during simultaneous operations. For uncompensated Baro-VNAV systems, LNAV/VNAV NA below -12°C or above 54°C. |  |

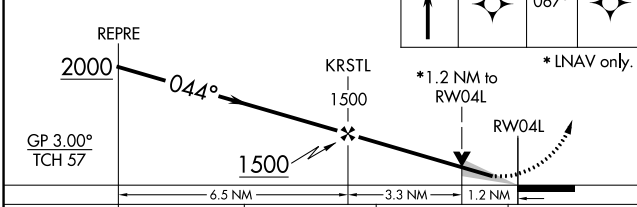
|  |  |   |                               |                                 |       |
|--|--|---|-------------------------------|---------------------------------|-------|
| D-ATIS<br>(ARR/DEP)(ARR-NE) (ARR-SW)<br><b>128.725 117.7 115.4</b> | NEW YORK APP CON<br><b>128.125 269.0</b> | KENNEDY TOWER<br>Rwys 4R/22L and 13L/31R <b>119.1 281.55</b><br>Rwys 4L/22R and 13R/31L <b>123.9 281.55</b> | GND CON<br><b>121.9 348.6</b> | CLNC DEL<br><b>135.05 348.6</b> | CPDLC |
|--|--|---|-------------------------------|---------------------------------|-------|



NE-2, 05 SEP 2024 to 03 OCT 2024

NE-2, 05 SEP 2024 to 03 OCT 2024

VGSI and RNAV glidepath not coincident (VGSI Angle 3.00/TCH 75).



| CATEGORY          | A      | B           | C                      | D                    |
|-------------------|--------|-------------|------------------------|----------------------|
| LPV DA            |        | 232/40      | 219 (300-¾)            |                      |
| LNAV/VNAV DA      |        | 329/50      | 316 (400-1)            |                      |
| LNAV MDA          | 480/55 | 467 (500-1) | 480-1⅜                 | 467 (500-1⅜)         |
| <b>C</b> CIRCLING | 640-1  | 627 (700-1) | 680-1¾<br>667 (700-1¾) | 680-2<br>667 (700-2) |

