

(SKORR5.SKORR) 23250

AL-610 (FAA)

JOHN F KENNEDY INTL (JFK)

SKORR FIVE DEPARTURE (RNAV)

NEW YORK, NEW YORK

D-ATIS
128.725
CLNC DEL
135.05 348.6
CPDLC
NEW YORK DEP CON
135.9 353.75

RNAV 1 - DME/DME/IRU or GPS required.
RADAR required.

TAKEOFF MINIMUMS:

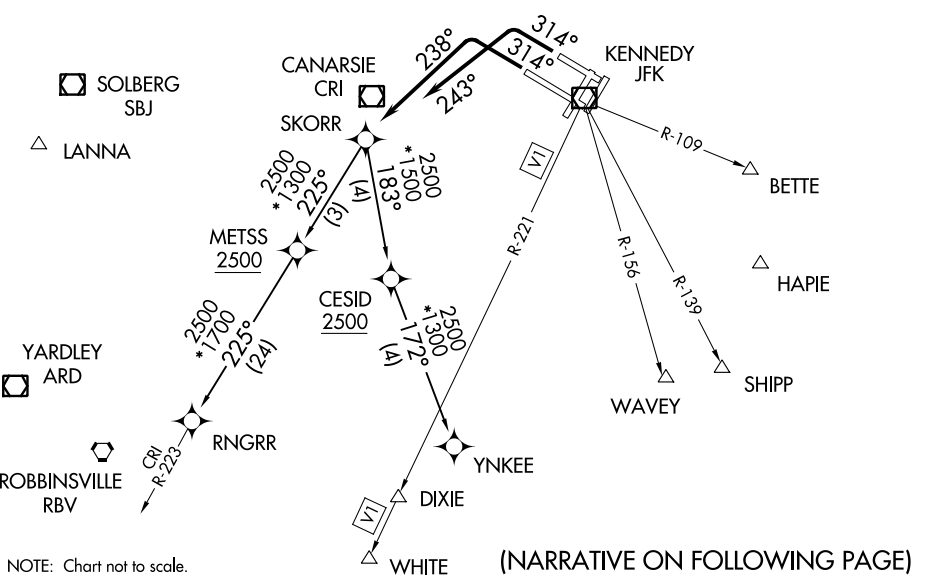
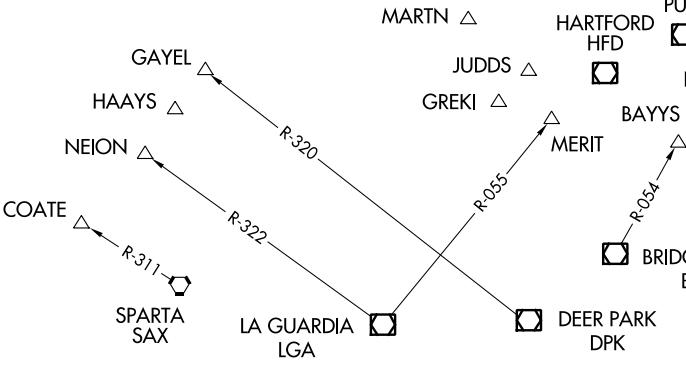
Rwys 4L/R, 13L/R, 22L/R: NA - Noise Abatement.

Rwy 31R: Standard with minimum climb of 500' per NM to 3000.

Rwy 31L: Standard with minimum climb of 500' per NM to 3000.

NOTE: Departing Rwy 31L requires expeditious intercept of outbound course 238° to SKORR.

- ◆ QUBIS
- ◆ TAFFY
- △ TOPPS
- △ EBONY
- ◆ ALEX
- ◆ TUSKY
- ◆ BRADD
- ◆ KANNI
- ◆ WHALE ▲
- ◆ VITOL
- ◆ DOVEY
- △ YAHOO
- ▲ JOBOC



NE-2, 05 SEP 2024 to 03 OCT 2024

NE-2, 05 SEP 2024 to 03 OCT 2024

NOTE: Chart not to scale.

(NARRATIVE ON FOLLOWING PAGE)

SKORR FIVE DEPARTURE (RNAV)

(SKORR5.SKORR) 29DEC22

NEW YORK, NEW YORK

JOHN F KENNEDY INTL (JFK)