

VOR/DME CNG <b>113.1</b> Chan <b>78</b>	APP CRS <b>221°</b>	Rwy Idg TDZE Apt Elev <b>6500</b> <b>402</b> <b>411</b>
---	------------------------	--

# VOR RWY 23

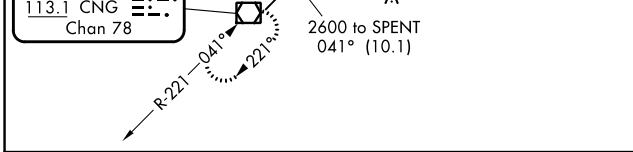
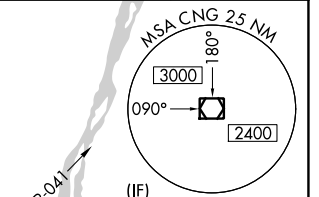
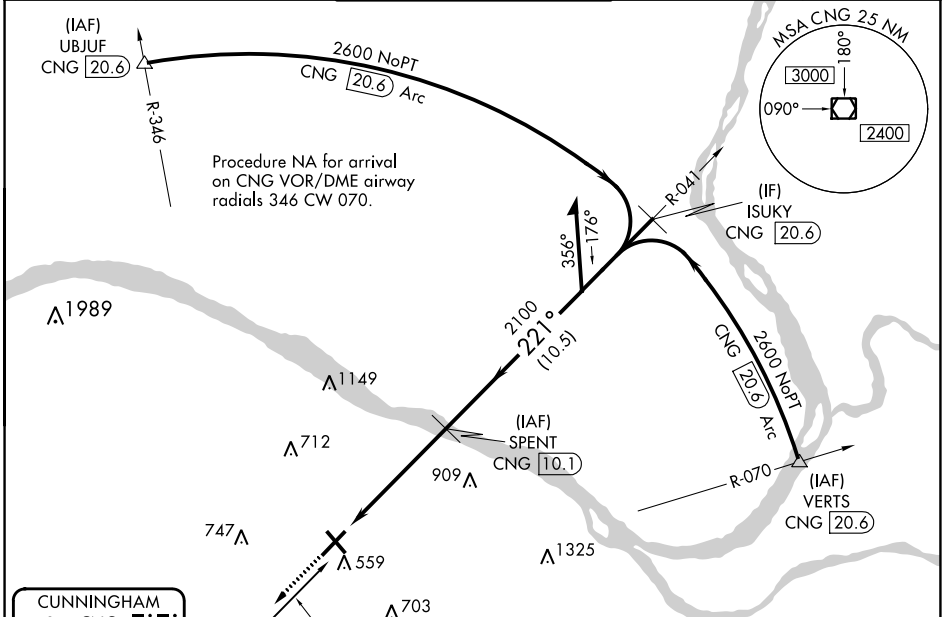
BARKLEY RGNL (PAH)

DME required.

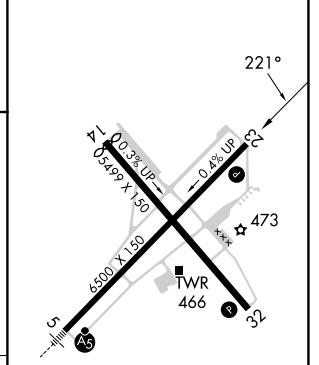
**▼**  
**▲** Rwy 23 helicopter visibility reduction below ¾ SM NA.

MISSED APPROACH: Climb to 2600 direct CNG VOR/DME and hold, continue climb-in-hold to 2600.

ASOS <b>118.375</b>	MEMPHIS CENTER <b>133.65 292.15</b>	PADUCAH TOWER ★ <b>119.6 (CTAF) 306.9</b>	GND CON <b>121.7 306.9</b>	UNICOM <b>122.95</b>
------------------------	--	--	-------------------------------	-------------------------



ELEV 411	TDZE 402
----------	----------



CATEGORY	A	B	C	D
S-23	860-1 458 (500-1)		860-1¾ 458 (500-1¾)	
CIRCLING	900-1 489 (500-1)		920-1½ 509 (600-1½)	1100-2¼ 689 (700-2¼)

2600	CNG
------	-----

SE-1, 05 SEP 2024 to 03 OCT 2024

SE-1, 05 SEP 2024 to 03 OCT 2024