

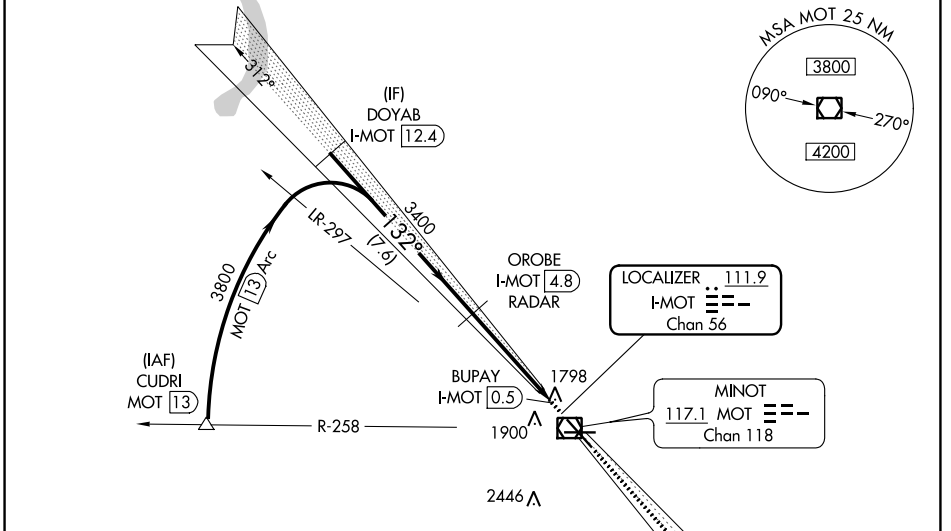
LOC/DME I-MOT <b>111.9</b> Chan <b>56</b>	APP CRS <b>132°</b>	Rwy ldg <b>7700</b> TDZE <b>1702</b> Apt Elev <b>1716</b>
---	------------------------	---

# LOC BC RWY 13

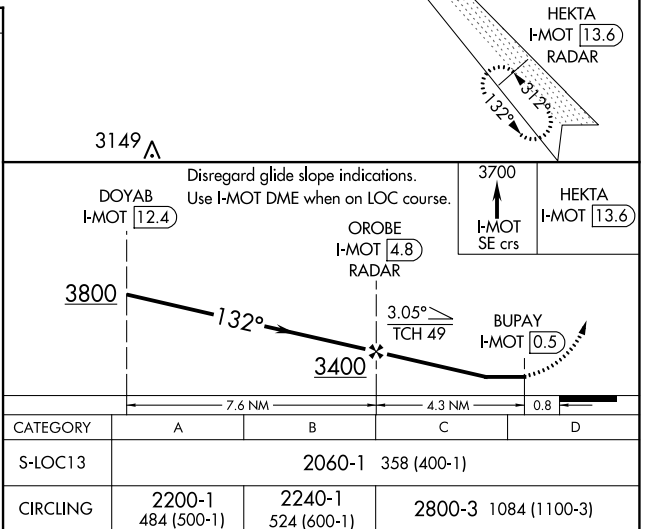
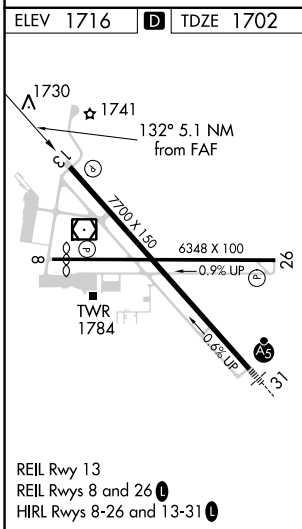
MINOT INTL (MOT)

DME required		MISSED APPROACH: Climb to 3700 on I-MOT SE course to HEKTA/I-MOT 13.6 DME/RADAR and hold.		
--------------	--	--	--	--

ASOS <b>118.725</b>	MINOT APP CON ★ <b>119.6 363.8</b>	MAGIC CITY TOWER ★ <b>118.2 (CTAF) 0 251.125</b>	GND CON <b>121.9</b>	UNICOM <b>122.95</b>
------------------------	---------------------------------------	---	-------------------------	-------------------------



## BACK COURSE



NC-1, 05 SEP 2024 to 03 OCT 2024

NC-1, 05 SEP 2024 to 03 OCT 2024