

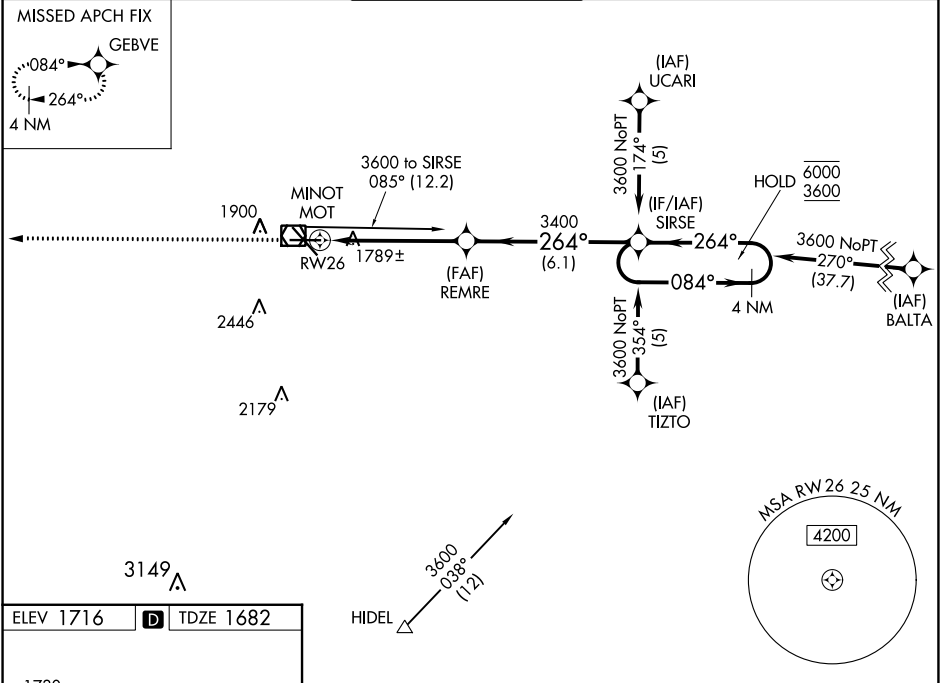
WAAS CH 56516 W26A	APP CRS 264°	Rwy Idg TDZE Apt Elev	6348 1682 1716
--	------------------------	-----------------------------	---

RNAV (GPS) RWY 26

MINOT INTL (MOT)

RNP APCH.		MISSED APPROACH: Climb to 3900 direct GEBVE and hold.	
▽	For uncompensated Baro-VNAV systems, LNAV/VNAV NA below -18°C or above 54°C.		

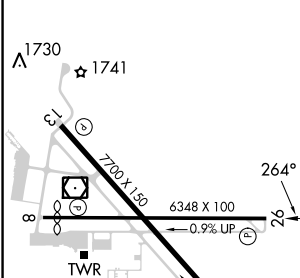
ASOS 118.725	MINOT APP CON * 119.6 363.8	MAGIC CITY TOWER * 118.2 (CTAF) 0 251.125	GND CON 121.9	UNICOM 122.95
------------------------	---------------------------------------	---	-------------------------	-------------------------



NC-1, 05 SEP 2024 to 03 OCT 2024

NC-1, 05 SEP 2024 to 03 OCT 2024

ELEV 1716	D	TDZE 1682
-----------	----------	-----------



	3900	GEBVE				
			REMRE	SIRSE	4 NM Holding Pattern	
			3400	3400	084° → 6000	← 264° 3600
						GP 3.00° TCH 50
			1 NM	4.2 NM	6.1 NM	
CATEGORY	A	B	C	D		
LPV DA		1932-1	250 (300-1)			
LNAV/VNAV DA		1932-1	250 (300-1)			
LNAV MDA	2040-1	358 (400-1)	2040-1 3/8	358 (400-1 3/8)		
CIRCLING	2200-1 484 (500-1)	2240-1 524 (600-1)	2800-3	1084 (1100-3)		