

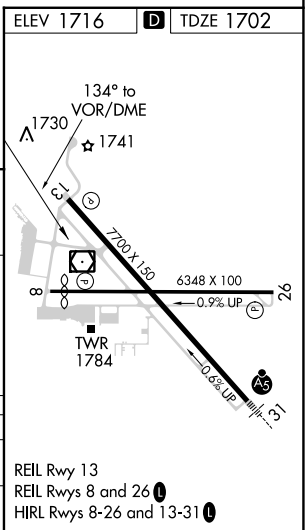
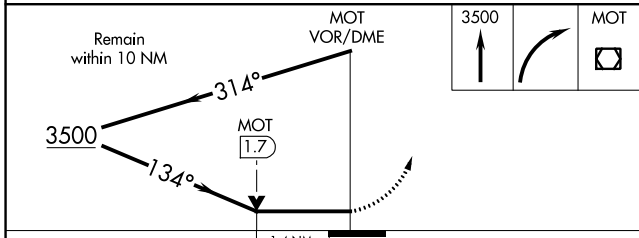
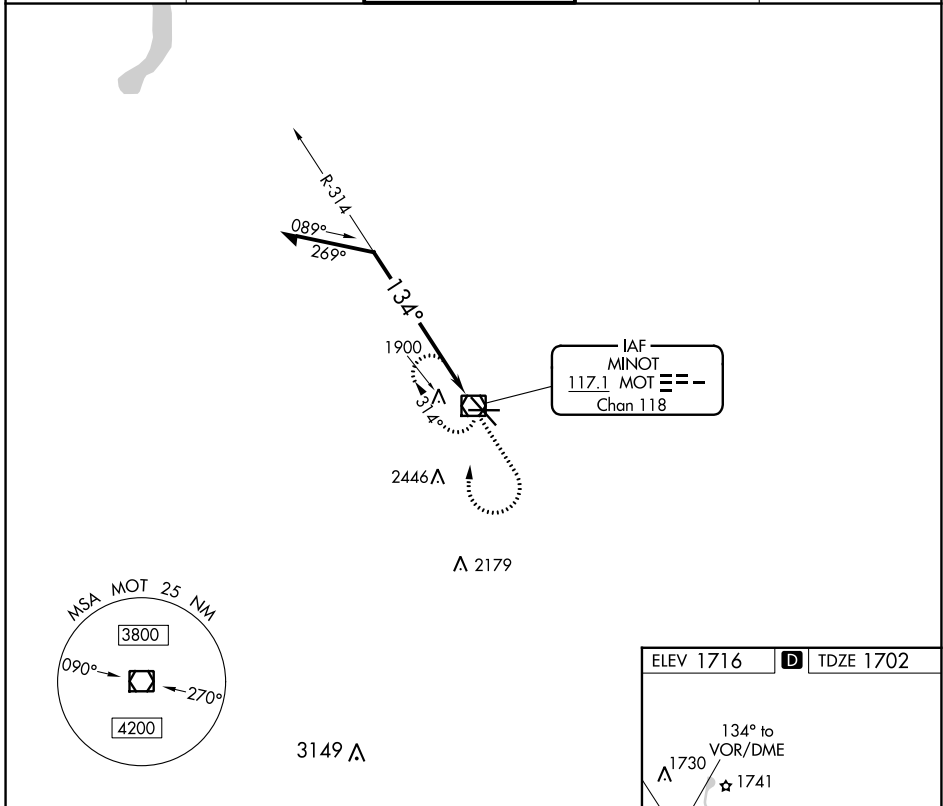
VOR/DME MOT <b>117.1</b> Chan <b>118</b>	APP CRS <b>134°</b>	Rwy Idg <b>7700</b> TDZE <b>1702</b> Apt Elev <b>1716</b>
--	------------------------	---

# VOR RWY 13

MINOT INTL (MOT)

**⚠** MISSED APPROACH: Climb to 3500 then right turn direct MOT VOR/DME and hold.

ASOS <b>118.725</b>	MINOT APP CON ★ <b>119.6 363.8</b>	MAGIC CITY TOWER ★ <b>118.2 (CTAF) 251.125</b>	GND CON <b>121.9</b>	UNICOM <b>122.95</b>
------------------------	---------------------------------------	---	-------------------------	-------------------------



CATEGORY	A	B	C	D
S-13	2200-1	498 (500-1)	2200-1 <sup>3</sup> / <sub>8</sub> 498 (500-1 <sup>3</sup> / <sub>8</sub> )	2200-1 <sup>1</sup> / <sub>2</sub> 498 (500-1 <sup>1</sup> / <sub>2</sub> )
CIRCLING	2200-1 484 (500-1)	2240-1 524 (600-1)	2800-3	1084 (1100-3)

NC-1, 05 SEP 2024 to 03 OCT 2024

NC-1, 05 SEP 2024 to 03 OCT 2024

REIL Rwy 13  
REIL Rwys 8 and 26  
HIRL Rwys 8-26 and 13-31