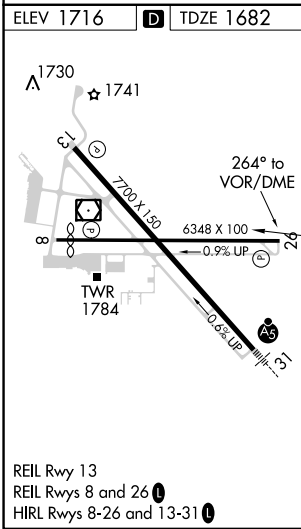
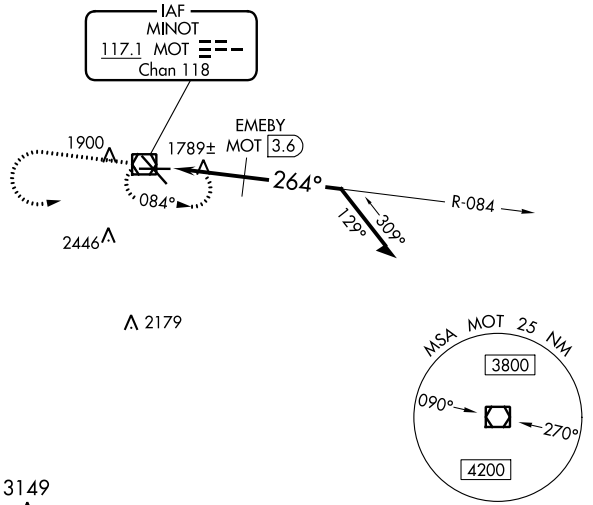


| | | | |
|--|------------------------|---|---|
| VOR/DME MOT 117.1 Chan 118 | APP CRS 264° | Rwy Idg TDZE 1682 Apt Elev 1716 | 6348 1682 1716 |
|--|------------------------|---|---|

VOR RWY 26

MINOT INTL (MOT)

| | | | | |
|------------------------|---------------------------------------|--|-------------------------|-------------------------|
| | | MISSED APPROACH: Climb to 3600 then left turn direct MOT VOR/DME and hold. | | |
| ASOS 118.725 | MINOT APP CON * 119.6 363.8 | MAGIC CITY TOWER * 118.2 (CTAF) 251.125 | GND CON 121.9 | UNICOM 122.95 |



| ELEV 1716 | D | TDZE 1682 | 3149 A | |
|--|-----------------------|---|-------------------------|-------------------------|
| 3600 | MOT | MOT VOR/DME | 3500 | |
| VGSI and descent angles not coincident (VGSI Angle 3.00/TCH 49). | | MOT VOR/DME 084° 3400 264° 2540 TCH 50 2.91° 1 NM 1.6 NM | Remain within 10 NM | |
| CATEGORY | A | B | C | D |
| S-26 | 2540-1 858 (900-1) | 2540-1¼ 858 (900-1¼) | 2540-2½ 858 (900-2½) | 2540-2¾ 858 (900-2¾) |
| CIRCLING | 2540-1 824 (900-1) | 2540-1¼ 824 (900-1¼) | 2800-3 | 1084 (1100-3) |
| EMEBY FIX MINIMUMS | | | | |
| S-26 | 2040-1 358 (400-1) | | 2040-1¼ 358 (400-1¼) | |
| CIRCLING | 2200-1 484 (500-1) | 2240-1 524 (600-1) | 2800-3 | 1084 (1100-3) |

NC-1, 05 SEP 2024 to 03 OCT 2024

NC-1, 05 SEP 2024 to 03 OCT 2024