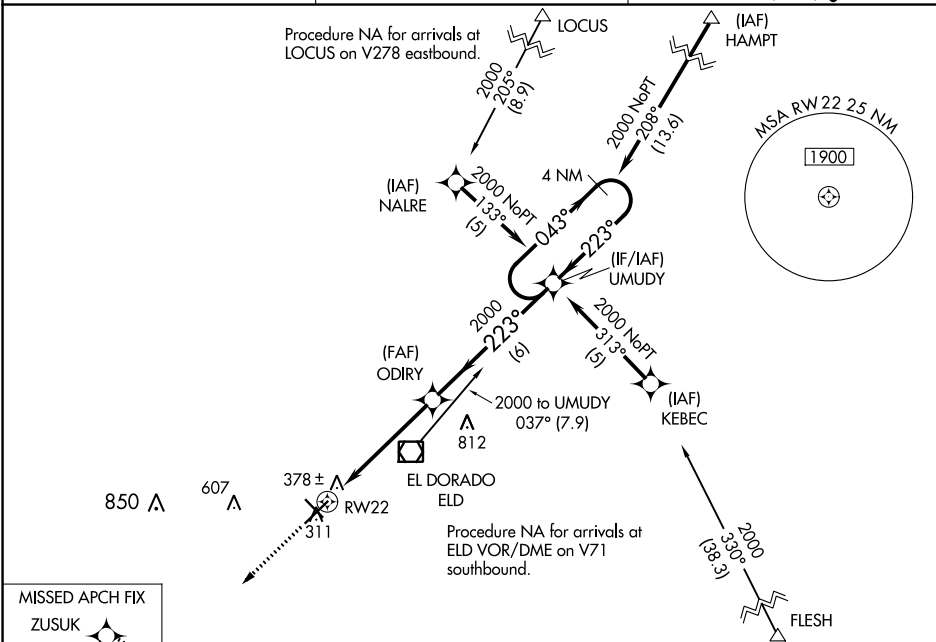


WAAS CH 77521 W22A	APP CRS 223°	Rwy Idg 6601 TDZE 259 Apt Elev 277
--	------------------------	---

RNAV (GPS) RWY 22

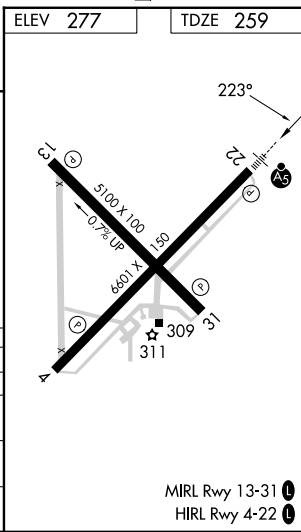
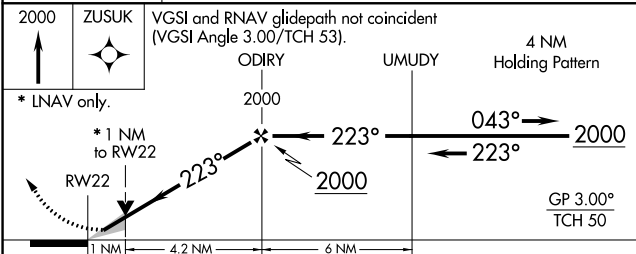
SOUTH ARKANSAS RGNL AT GOODWIN FLD (ELD)

RNP APCH. ▼ For uncompensated Baro-VNAV systems, LNAV/VNAV NA below -15°C or above 54°C. For inop ALS, increase LPV all Cats visibility to 1 1/8 SM, increase LNAV/VNAV all Cats visibility to 1 1/4 SM. Circling Rwy 4, 13, 31, NA at night.	MALSR AS	MISSED APPROACH: Climb to 2000 direct ZUSUK and hold.
ASOS 118.325	FORT WORTH CENTER 128.2 269.1	UNICOM 123.0 (CTAF) 0



SC-1, 05 SEP 2024 to 03 OCT 2024

SC-1, 05 SEP 2024 to 03 OCT 2024



CATEGORY	A	B	C	D
LPV DA		602-5/8 343 (400-5/8)		
LNAV/VNAV DA		650-7/8 391 (400-7/8)		
LNAV MDA	640-1/2 381 (400-1/2)		640-5/8 381 (400-5/8)	
CIRCLING	740-1 463 (500-1)		920-1 1/4 643 (700-1 1/4)	920-2 643 (700-2)