

| | | |
|---------------------------|------------------------|-------------------------|
| LOC I-RGO 109.5 | APP CRS 189° | Rwy Idg 7000 |
| | | TDZE 1218 |
| | | Apt Elev 1226 |

ILS or LOC RWY 19

AKRON-CANTON RGNL (CAK)

∇ ** RVR 1800 authorized with the use of FD or AP or HUD to DA. For inoperative ALS, increase CAT C/D visibility to RVR 6000. ZEVLO fix minimums: For inoperative ALS, increase Cat C/D visibility to RVR 5500.

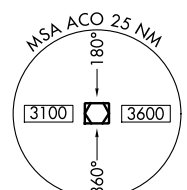
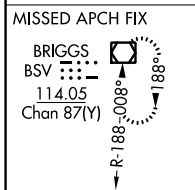
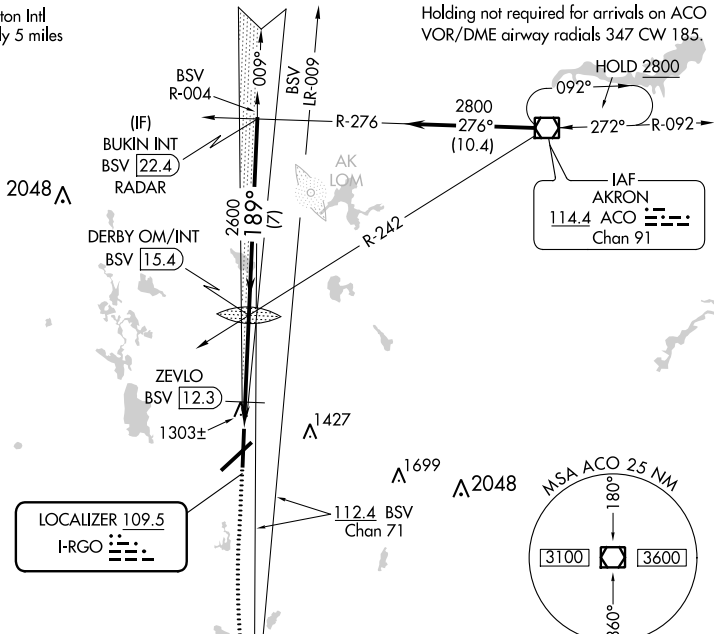


MISSED APPROACH: Climb to 1700 then climbing left turn to 3000 direct BSV VOR/DME and hold.

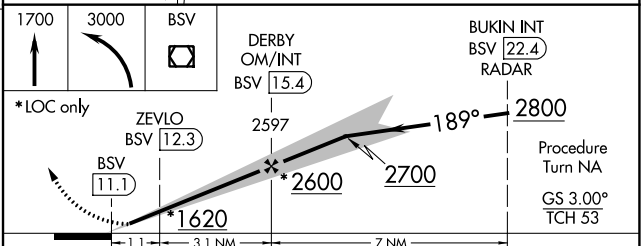
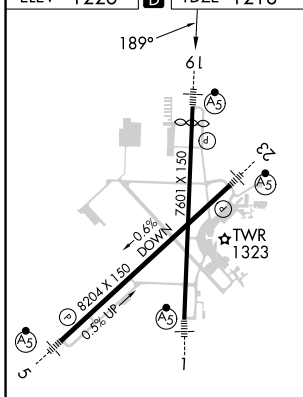
| | | | | |
|-----------------------|--|---|-------------------------------|---------------------------|
| ATIS 121.05 | CLEVELAND APP CON * 125.5 269.25 | AKRON-CANTON TOWER 134.75 279.575 | GND CON 121.7 348.6 | CLNC DEL 132.05 |
|-----------------------|--|---|-------------------------------|---------------------------|

CAUTION: OM for Akron Fulton Intl may be received approximately 5 miles north of DERBY OM.

Holding not required for arrivals on ACO VOR/DME airway radials 347 CW 185.



| | | |
|-----------|----------|-----------|
| ELEV 1226 | D | TDZE 1218 |
|-----------|----------|-----------|



| CATEGORY | A | B | C | D |
|--------------------|-----------------------|-------------|-------------------------|------------------------|
| S-ILS 19 | **1418/24 200 (200-½) | | | |
| S-LOC 19 | 1620/24 | 402 (400-½) | 1620/40 | 402 (400-¾) |
| CIRCLING | 1760-1 | 534 (600-1) | 1780-1½ 554 (600-1½) | 1800-2 574 (600-2) |
| ZEVLO FIX MINIMUMS | | | | |
| S-LOC 19 | 1580/24 362 (400-½) | | | 1580/40 362 (400-¾) |
| CIRCLING | 1760-1 | 534 (600-1) | 1780-1½ 554 (600-1½) | 1800-2 574 (600-2) |

HIRL Rwy's 1-19 and 5-23

FAF to MAP 4.2 NM

| | | | | | |
|---------|------|------|------|------|------|
| Knots | 60 | 90 | 120 | 150 | 180 |
| Min:Sec | 4:12 | 2:48 | 2:06 | 1:41 | 1:24 |

EC-2, 05 SEP 2024 to 03 OCT 2024

EC-2, 05 SEP 2024 to 03 OCT 2024