


LOC/DME I-EQX <b>108.3</b> Chan <b>20</b>	APP CRS <b>054°</b>	Rwy ldg TDZE Apt Elev	<b>8204</b> <b>1199</b> <b>1226</b>
---	------------------------	-----------------------------	---

# ILS or LOC RWY 5

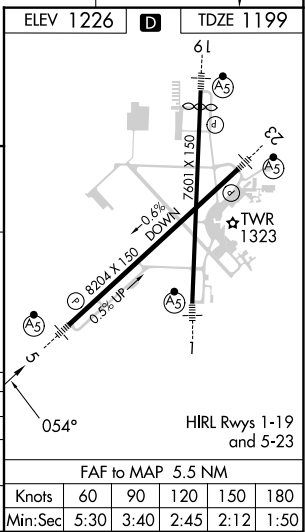
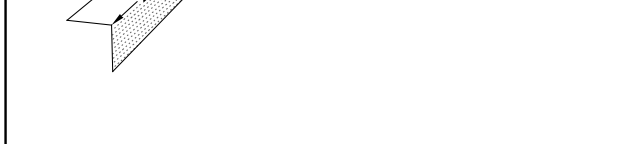
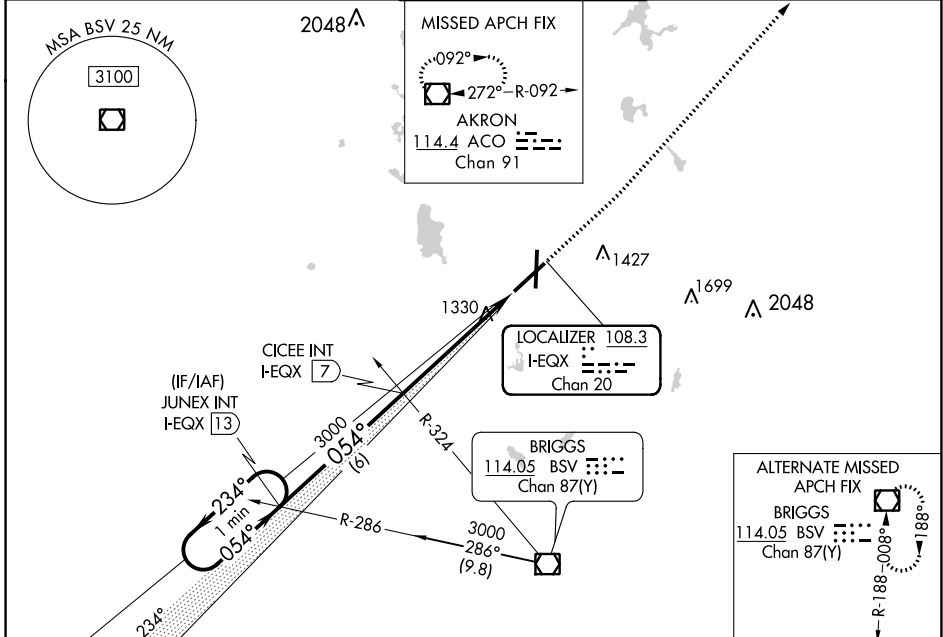
AKRON-CANTON RGNL (CAK)

**▽** \*\*RVR 1800 authorized with use of FD or AP or HUD to DA.

MALSR 

MISSED APPROACH: Climb to 2000 then climbing left turn to 3000 direct ACO VOR/DME and hold.

ATIS <b>121.05</b>	CLEVELAND APP CON * <b>125.5 269.25</b>	AKRON-CANTON TOWER <b>134.75 279.575</b>	GND CON <b>121.7 348.6</b>	CLNC DEL <b>132.05</b>
-----------------------	--	---	-------------------------------	---------------------------



CATEGORY	A	B	C	D
S-ILS 5	**1399/24 200 (200-½)			
S-LOC 5	1640/24 441 (500-½)	1640/45 441 (500-¾)		
CIRCLING	1760-1 534 (600-1)	1780-1½ 554 (600-1½)	1800-2 574 (600-2)	

EC-2, 05 SEP 2024 to 03 OCT 2024

EC-2, 05 SEP 2024 to 03 OCT 2024

FAF to MAP 5.5 NM	Knots	60	90	120	150	180
	Min:Sec	5:30	3:40	2:45	2:12	1:50