

WAAS CH <b>58020</b> <b>W19A</b>	APP CRS <b>189°</b>	Rwy Idg TDZE Apt Elev	<b>7000</b> <b>1218</b> <b>1226</b>
--	------------------------	-----------------------------	---

# RNAV (GPS) RWY 19

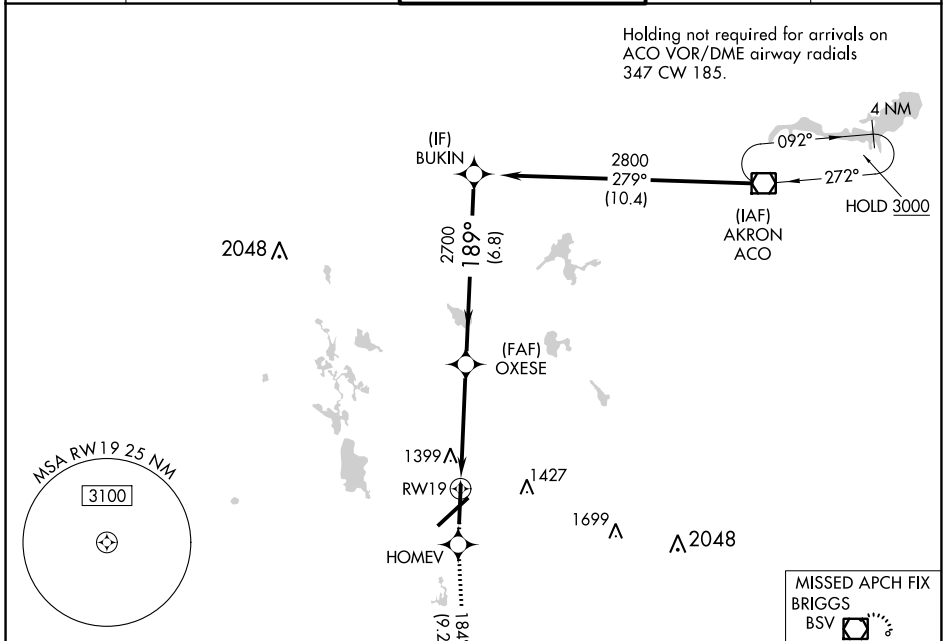
AKRON-CANTON RGNL (CAK)

**▼** For uncompensated Baro-VNAV systems, LNAV/VNAV NA below -17°C (2°F) or above 46°C (114°F). DME/DME RNP-0.3 NA.  
 \*\* RVR 1800 authorized with use of FD or AP or HUD to DA.

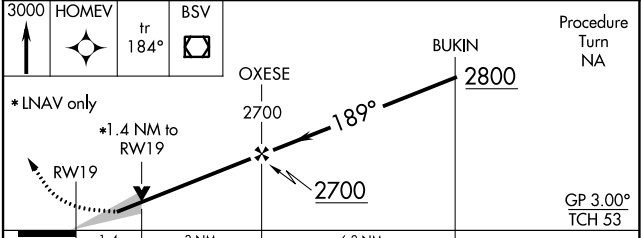
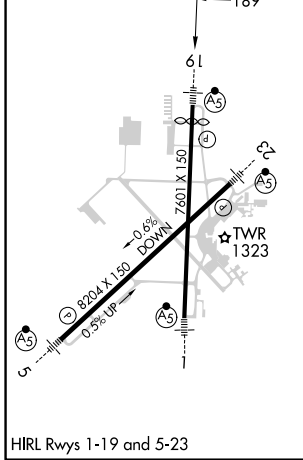
MALSRS MISSED APPROACH: Climb to 3000 direct HOMEV and on track 184° to BSV VOR/DME and hold.

ATIS <b>121.05</b>	CLEVELAND APP CON * <b>125.5 269.25</b>	AKRON-CANTON TOWER <b>134.75 279.575</b>	GND CON <b>121.7 348.6</b>	CLNC DEL <b>132.05</b>
-----------------------	--	---	-------------------------------	---------------------------

Holding not required for arrivals on ACO VOR/DME airway radials 347 CW 185.



ELEV 1226	<b>D</b>	TDZE 1218
-----------	----------	-----------



CATEGORY	A	B	C	D
LPV DA **		1418/24	200 (200-1/2)	
LNAV/VNAV DA		1753-1 1/2	535 (600-1 1/2)	
LNAV MDA	1700/24	482 (500-1/2)	1700/40 482 (500-3/4)	1700/50 482 (500-1)
CIRCLING	1760-1	534 (600-1)	1780-1 1/2 554 (600-1 1/2)	1800-2 574 (600-2)

EC-2, 05 SEP 2024 to 03 OCT 2024

EC-2, 05 SEP 2024 to 03 OCT 2024